

**Scope of Supply/Bill of Material & Mounting Drawings**

Part Number: T-T900-01-01-SL / T-T900-01-02

Part Description: Head Light Guard – Triumph Tiger900

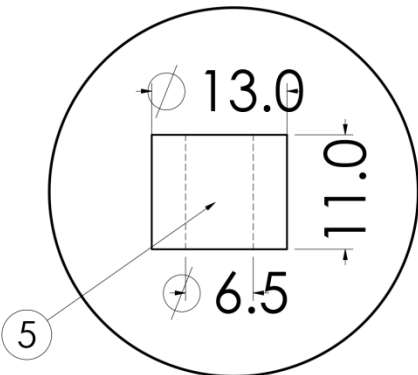
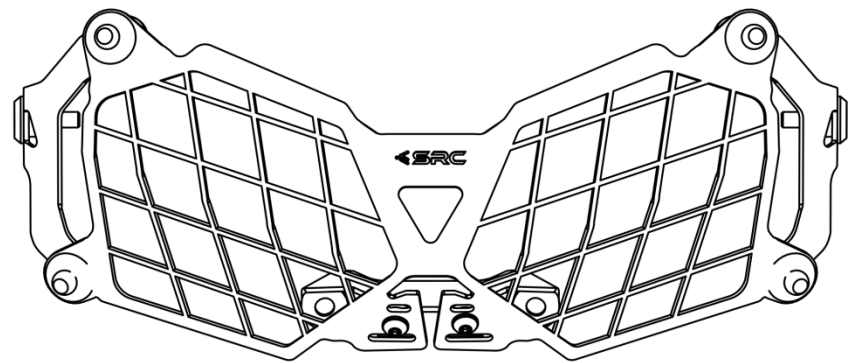
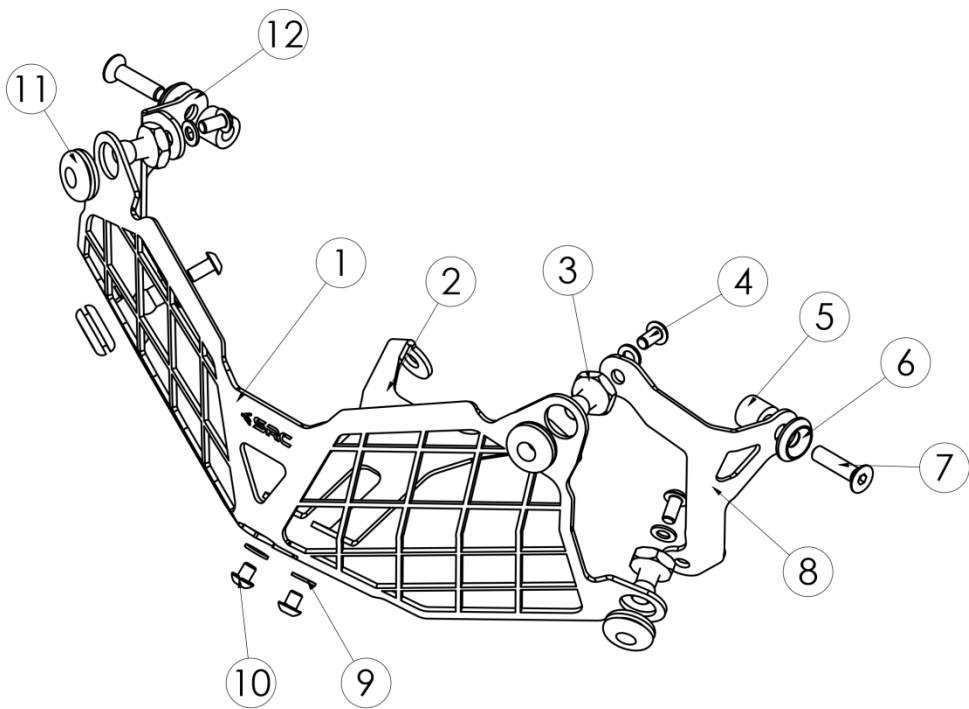
**Installation / Parts List / Bill of Material for Mounting**

| NO. | Description      | Quantity | Torque * (N-M) | Remarks **               | Chacklist |
|-----|------------------|----------|----------------|--------------------------|-----------|
| 1   | Head Light Guard | 1        |                |                          |           |
| 2   | Bottom Plate     | 1        |                |                          |           |
| 3   | Pin              | 4        |                |                          |           |
| 4   | Screw M5 x 10    | 4        | 5 - 6          | Use Liquid Thread Locker |           |
| 5   | Bush M6 13 x 11  | 2        |                |                          |           |
| 6   | Washer M6        | 2        |                |                          |           |
| 7   | Screw M6 x 25    | 2        | 9 - 10         | Use Liquid Thread Locker |           |
| 8   | Bracket LH       | 1        |                |                          |           |
| 9   | Washer M5        | 6        |                |                          |           |
| 10  | Screw M5 x 6     | 2        | 5 - 6          | Use Liquid Thread Locker |           |
| 11  | Grommet Rubber   | 4        |                |                          |           |
| 12  | Bracket RH       | 1        |                |                          |           |

SRC Design uses Metric System of Measurement and all dimensions in Millimeters

\* Recommended to use the Torque specified in the table

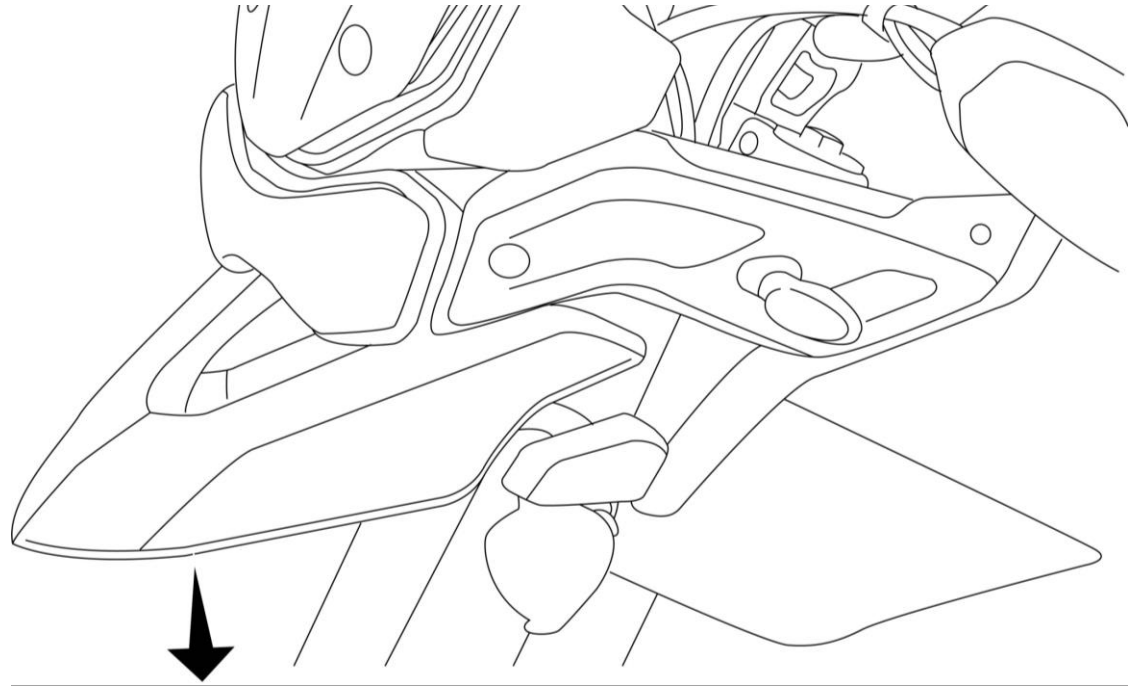
\*\* Denotes Usage of Liquid Thread Locker in specified Locations



## Mounting Instructions

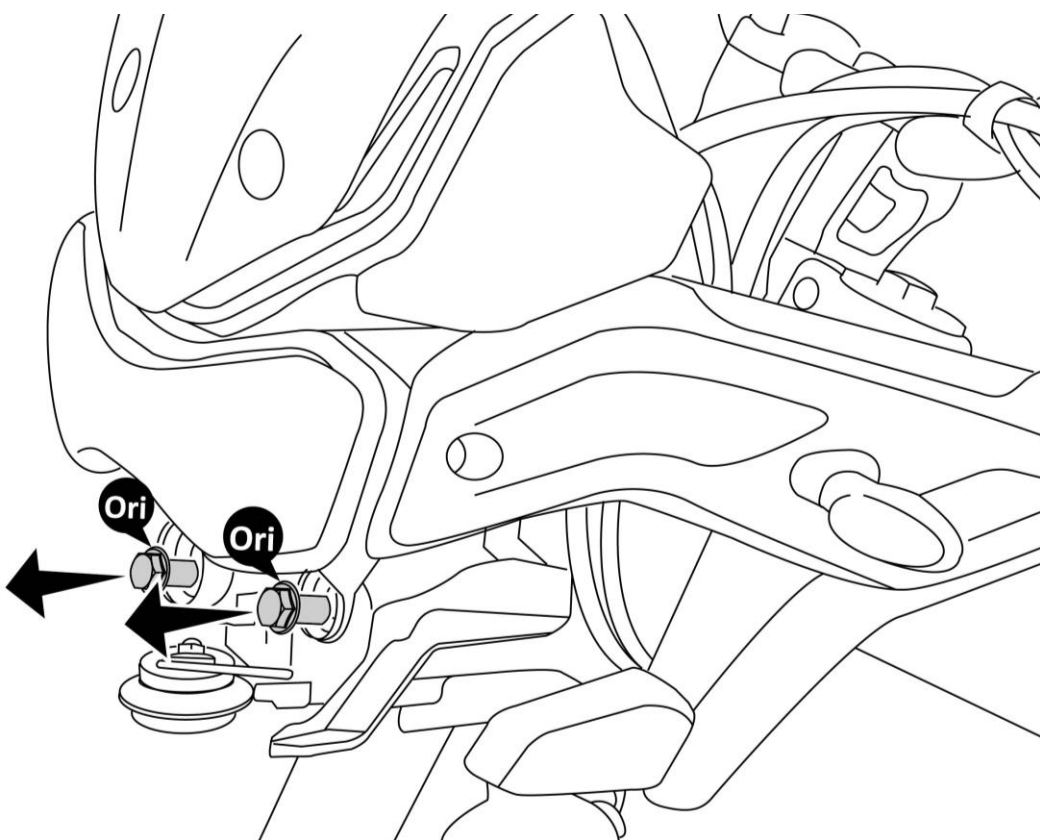
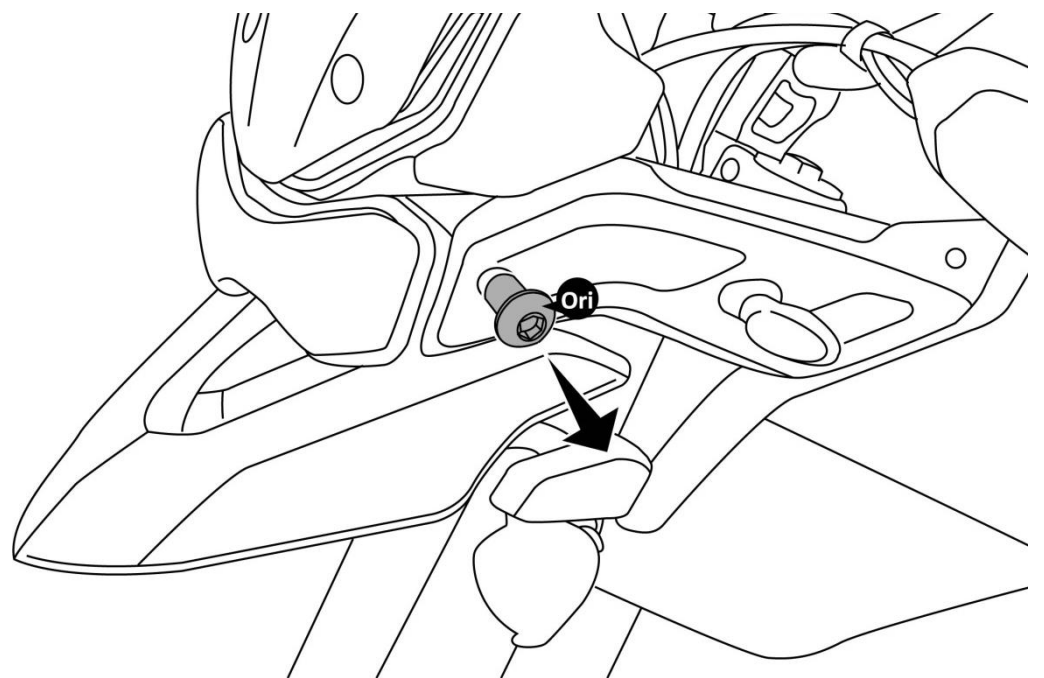
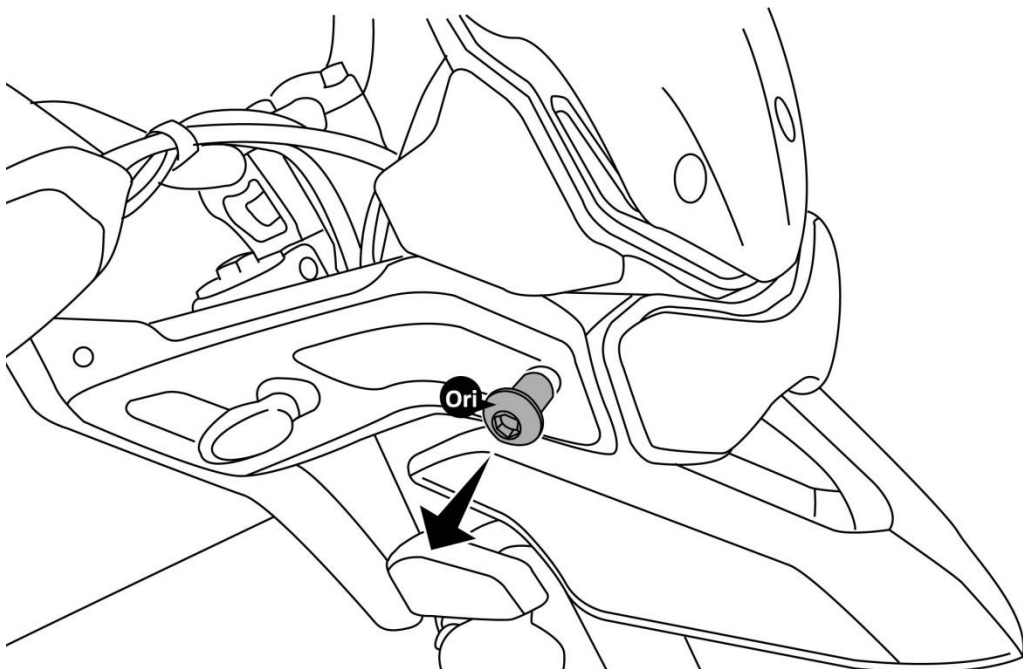
### Step 1:

The Front Aesthetic Non-metallic cover has to be removed to permit access and orienting the Bottom Plate.



### Step 2:

Unscrew Remove the Original Screw in motorbike (as show)



### Step 3:

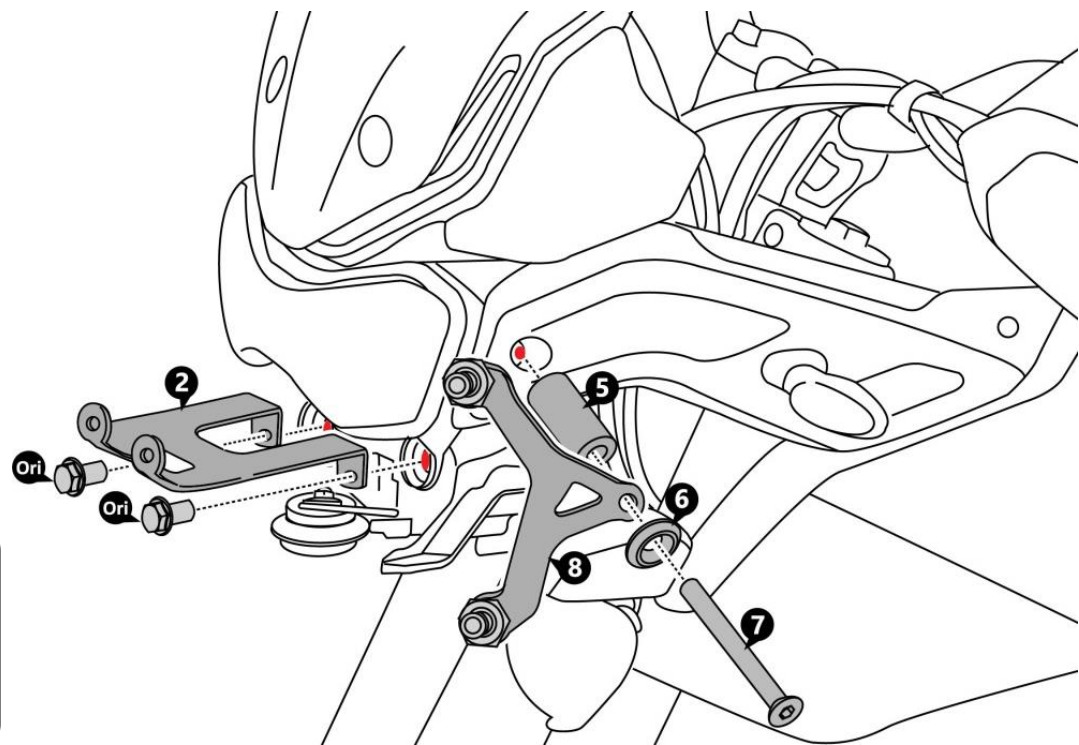
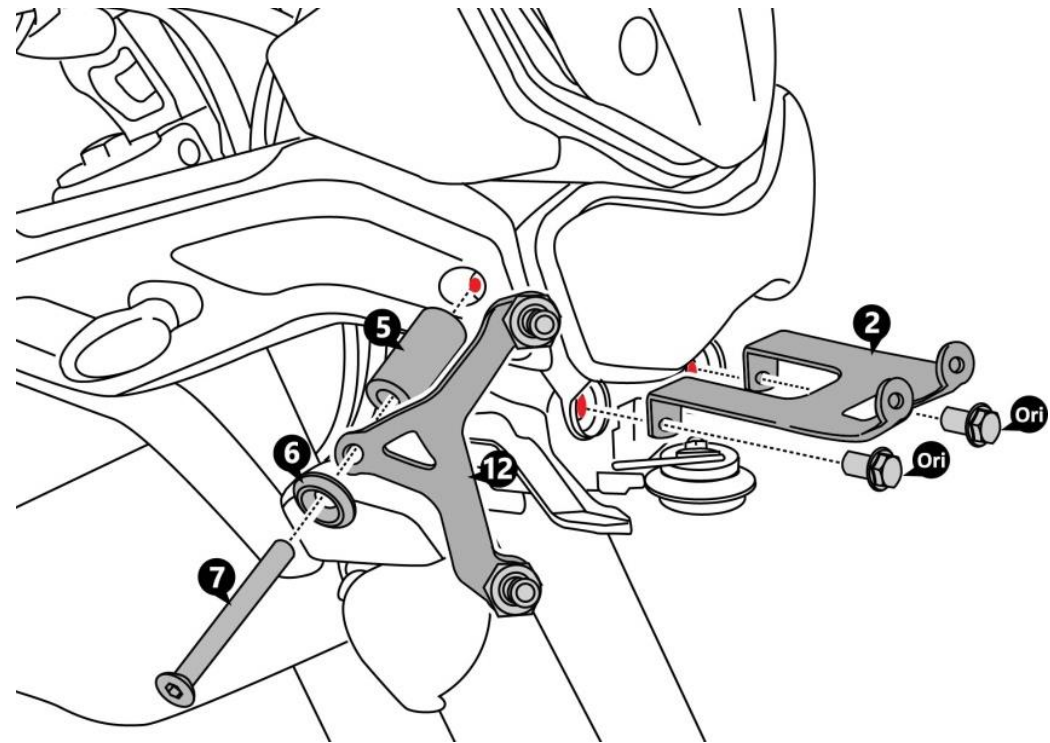
Unscrew Remove the Original Screw inside in motorbike (as show)



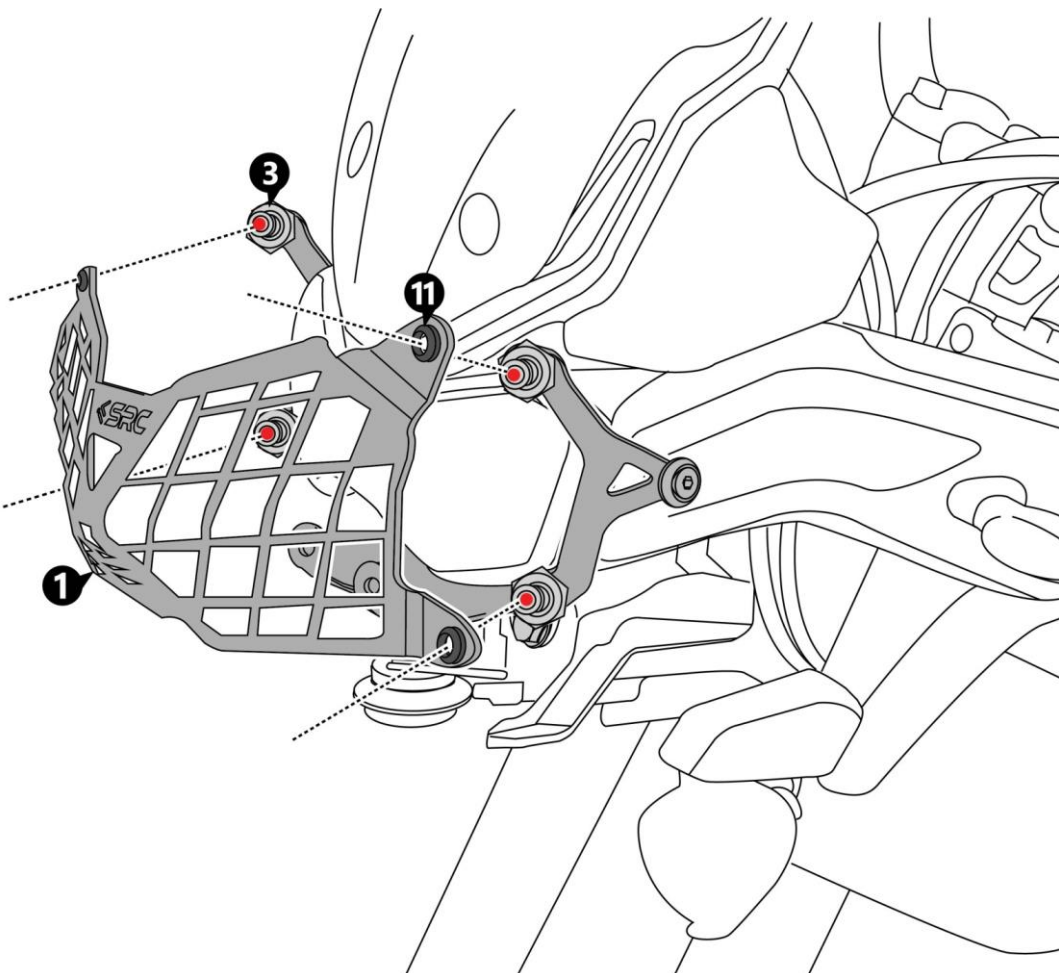
**Step 4:**

**Orient the Bottom Plate (2) in-line with the Mounting holes, (as shown) of the OE Bracket and slip-in the original screw – 2off, in front side in positions as shown and secure the threads.**

**Orient the Bracket RH (12) in-line with the Mounting holes, (as shown) of the OE Bracket and slip-in the Taper Ring M6 (6) – 1off, Screw M6 x 25 (7) – 1 off, Bush Delrin M6 13x11 (5) – 1off , in positions as shown and secure the threads.**



**Repeat the Step 4 for mounting the Bracket LH (5), as shown**

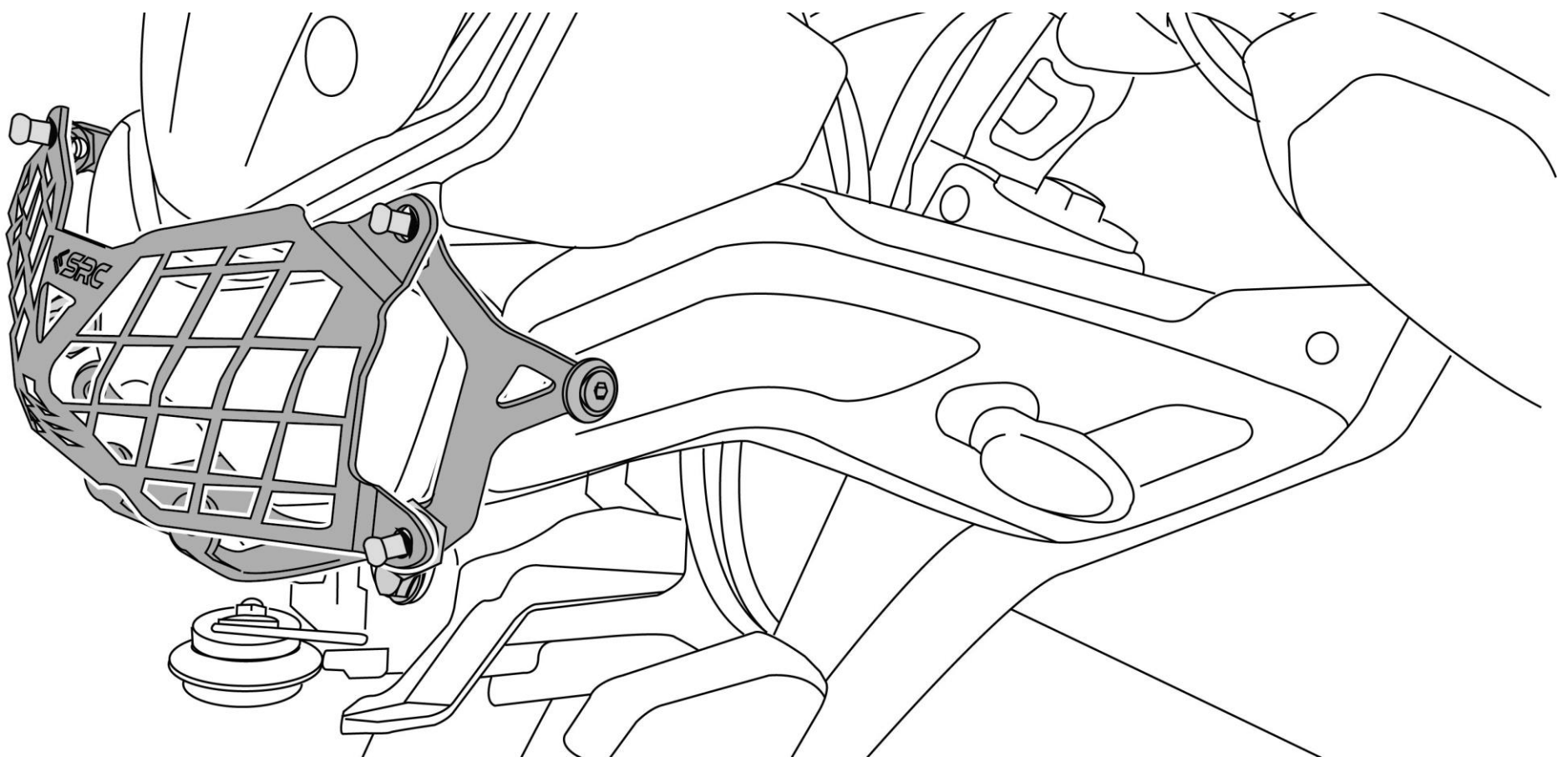
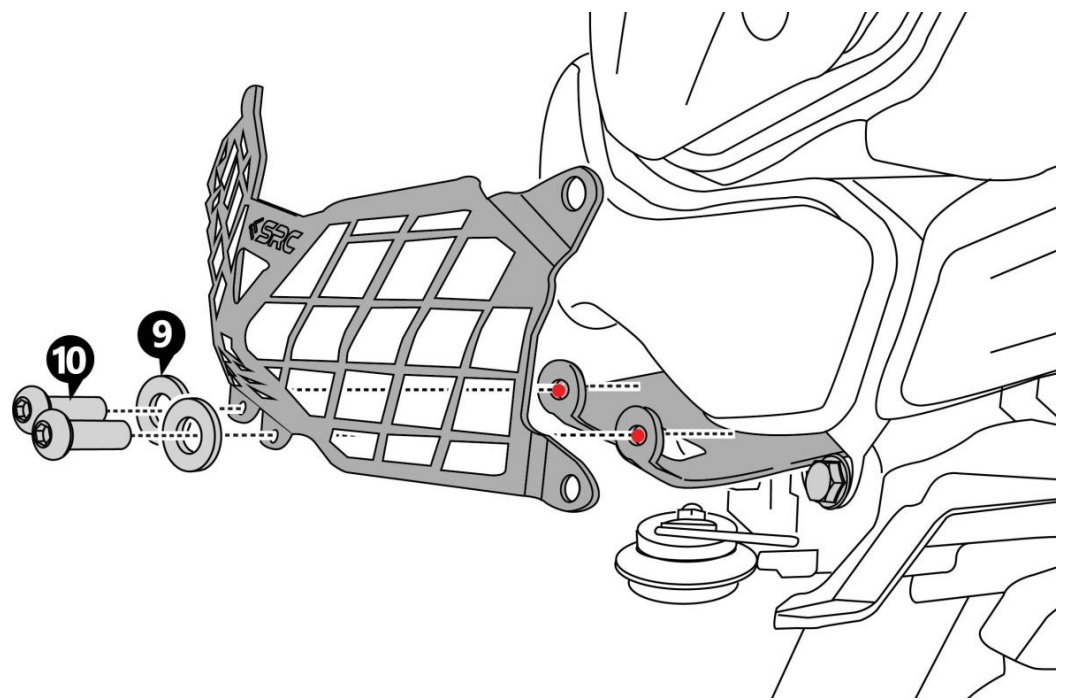


**Step 5:**

**Orient the Head Light Guard (1), as shown. Assemble the Grommet (11) hugging and flush, with the outer surfaces of the Head Light Guard and holding on to the Mounting Pins (3), projecting out of the Bracket RH & Bracket LH**

**Step 6:**

**Orient the Head Light Guard (1), as shown, to the Bottom Plate (2) and slip in the M5 Washer (9) – 2 off, and Screw M5x6 (10) – 2 off, and secure the threads.**



**Step 6:**

**The Head Light Guard “As is final Mounted Condition”**



## General Instructions

- 1. We request you to pay attention to the Mounting Instructions in this document and follow the step-by-step procedures.**
- 2. This Mounting Instruction manual is a “Do It Yourself” (DIY) fitment manual of the Accessory part to the Vehicle. We have prepared this based on our experience and knowledge, related to the Vehicle, Part and its functional aspects.**
- 3. SRC cannot guarantee the interchangeability of the parts to any other manufacturer’s accessory part. It is advised to the User, to inspect and ensure the original state of all other Vehicle parts.**
- 4. We request you to bear in mind, that the Installed part can change the driving behaviour and/or the stability during driving or any other dynamic conditions.**
- 5. If you have the appropriate tools and another person to assist you in the mounting, it will help.**
- 6. After Completion of the Mounting and before taking on a First ride, Ensure and Check all functions of the Vehicle. It is always advised to check loosening of the fasteners after the first 50 kilo meters of ride and at regular intervals.**
- 7. We are showing here the Scope of Supply/ Installation/Parts list & BOM from SRC**
- 8. To the maximum extent possible, our design use the current Mounting/Fitment of the Original Equipment, so that Installation of these accessories will not affect the Payload or Function of the Vehicle or the Part on which it is mounted to protect it**
- 9. If any additional modifications are to be done, prior to the fitment of the accessories, it will be explicitly specified in the instruction sheets.**