

## Scope of Supply/Bill of Material & Mounting Drawings

Part Number: S-VS1050XT-09-01-AL / S-VS1050XT-09-02-AL

Part Description: Engine Guard–SUZUKI V-STROM1050 XT

Applicable to Finished colour versions of Silver and Black

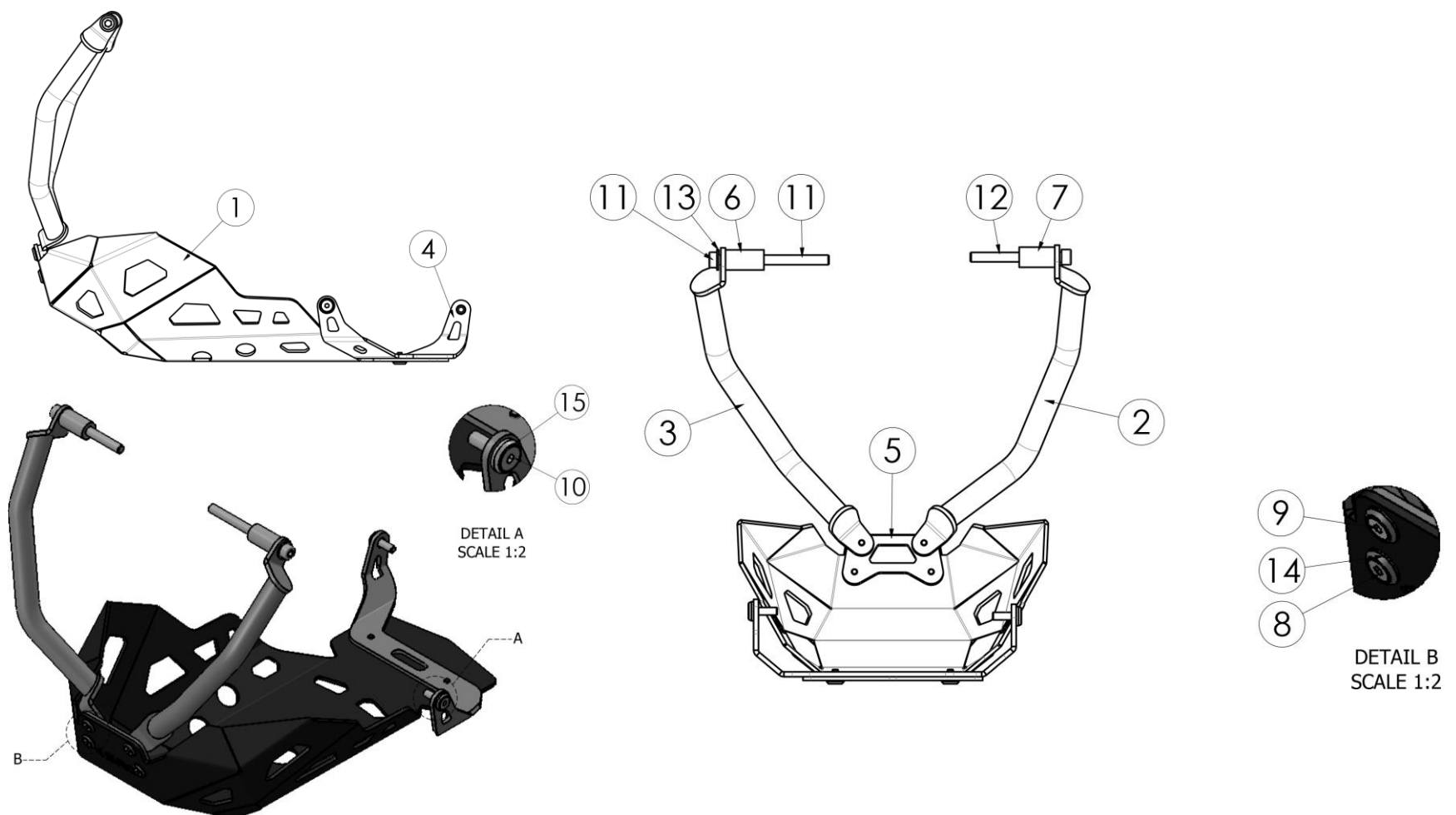
### Installation / Parts List / Bill of Material for Mounting

NO.	Description	Quantity	Torque * (N-M)	Remarks **
1	Enging Guard	1		
2	Bracket RH	1		
3	Bracket LH	1		
4	Bracket Lower	1		
5	Bracket Front	1		
6	Bush LH 21x11x40	1		
7	Bush RH 21x11x37	1		
8	Socket contersunk head screw M6 x 15	4	9 - 10	Use Liquid Thread Locker
9	Socket contersunk head screw M6 x 20	2	22 - 24	Use Liquid Thread Locker
10	Socket contersunk head screw M8 x 30	2	44 - 48	Use Liquid Thread Locker
11	Socket head cap screw M10 x 115	1	44- 48	Use Liquid Thread Locker
12	Socket head cap screw M10 x 95	1		
13	Washer M10	2		
14	Taper Ring M6	6		
15	Taper Ring M8	2		

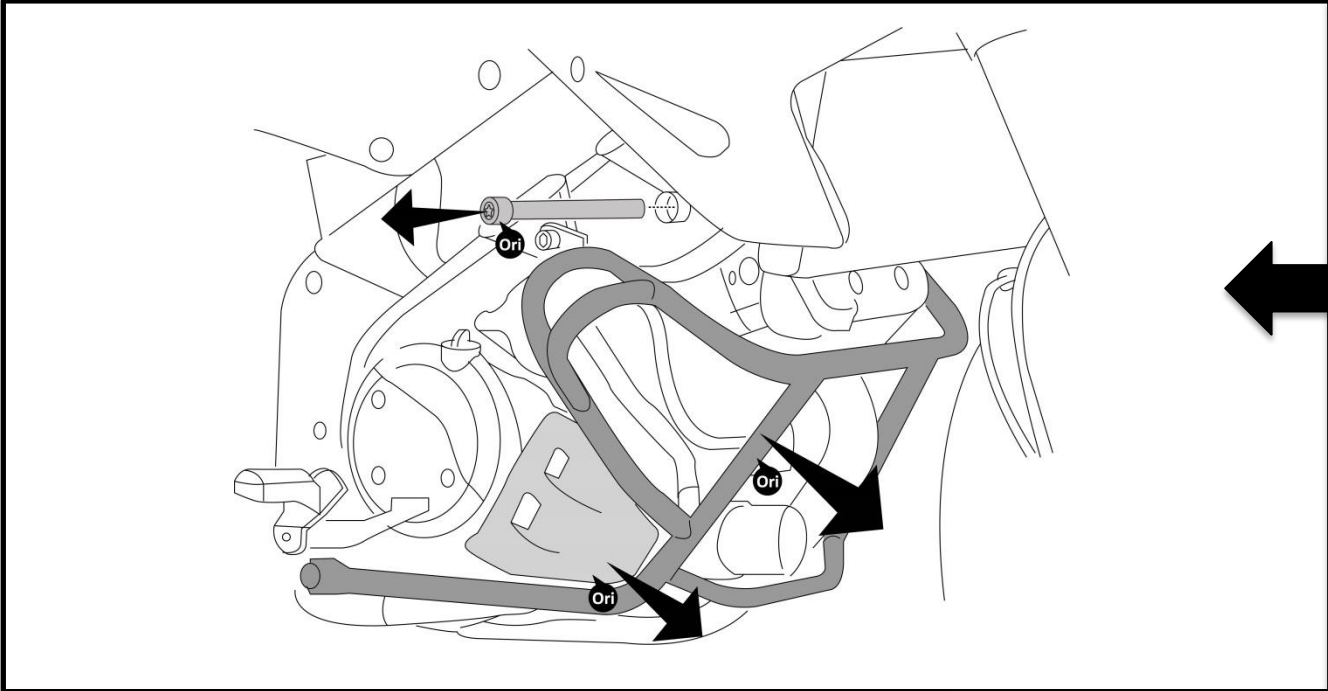
SRC Design uses Metric System of Measurement and all dimensions in Millimeters

\* Recommended to use the Torque specified in the table

\*\* Denotes Usage of Liquid Thread Locker in specified Locations

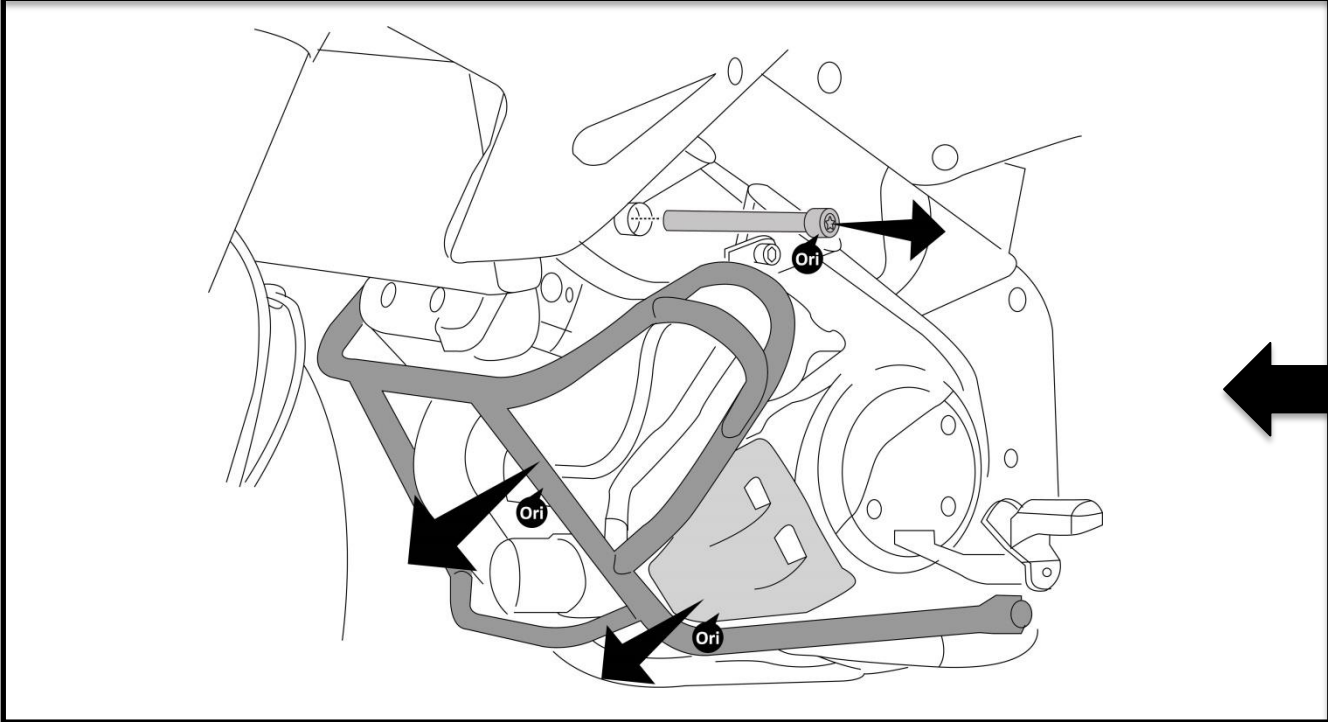


**Mounting Instructions**

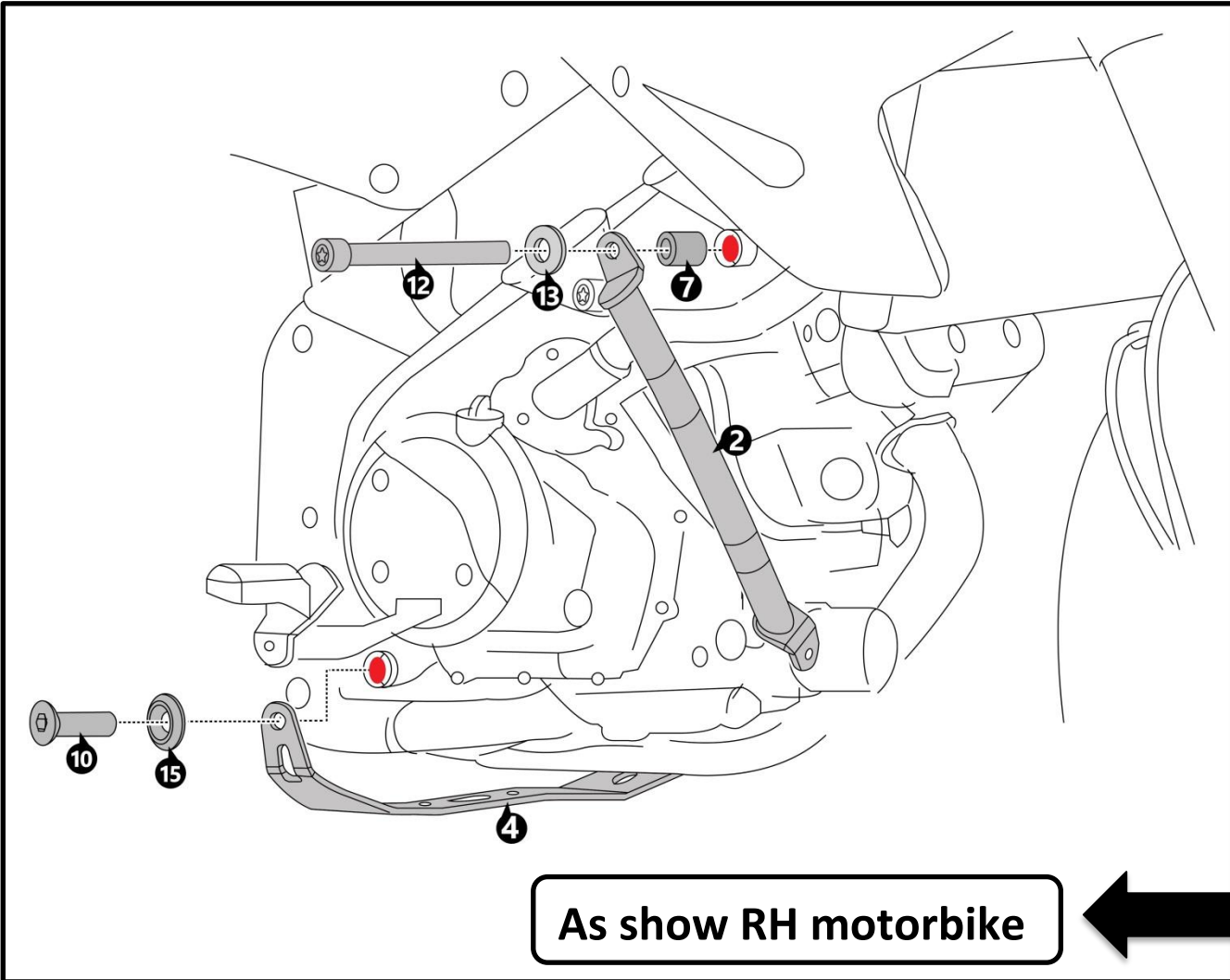


As show RH motorbike

Before installation,  
remove the original Guard  
and original crash bar (as  
show)

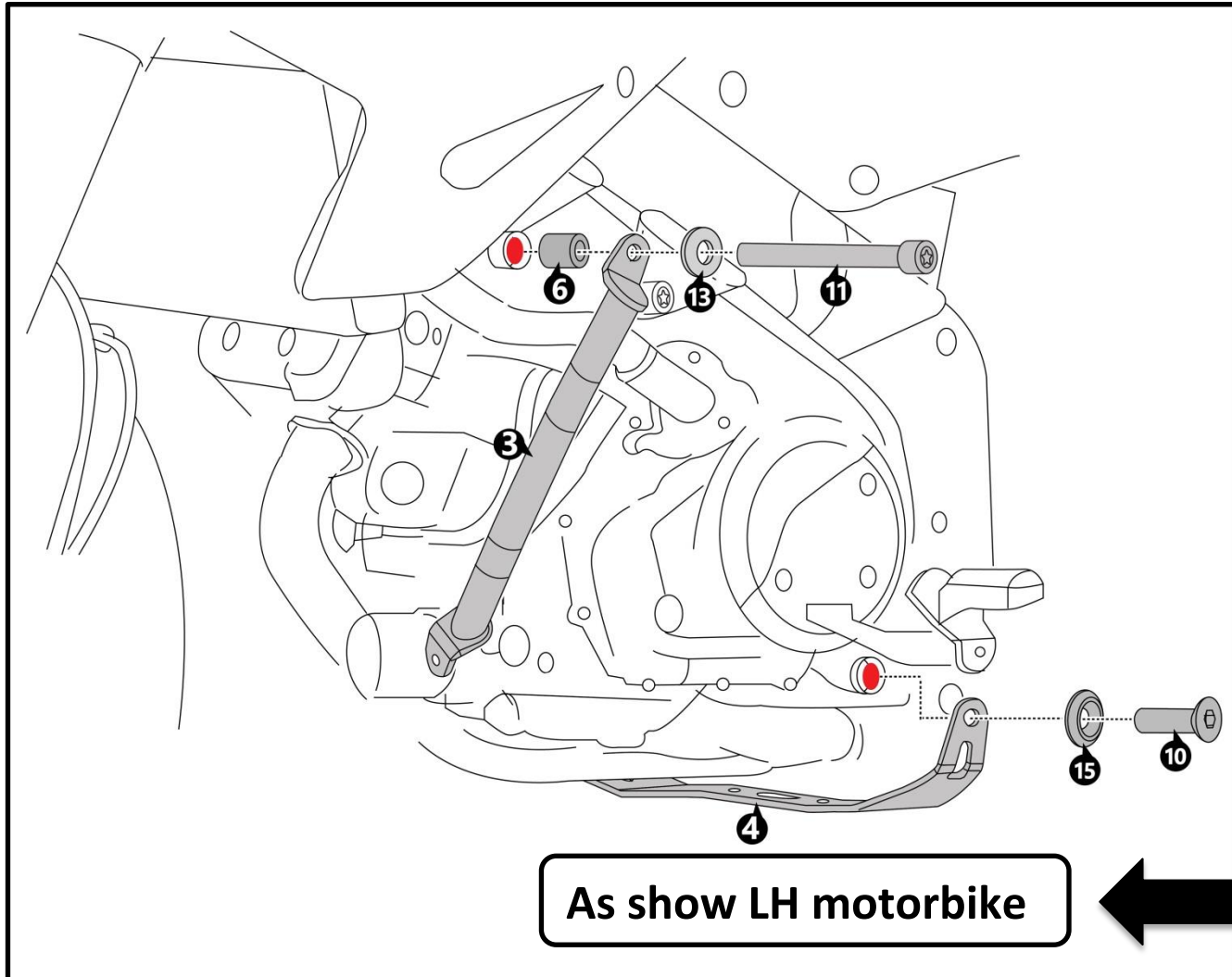


As show LH motorbike



Orient the Bracket RH (2)  
and slip-in the Bush RH (7)-1  
off, the washer M10 (13) – 1  
off, the long bolt M10x95  
(12)-1 off,  
  
Orient the Bracket Lower (4)  
and slip-in the taper ring  
(15) – 1 off, the screw  
M8x30 (10) – 1 off,  
  
And tighten it to torque as  
shown in the BOM table.

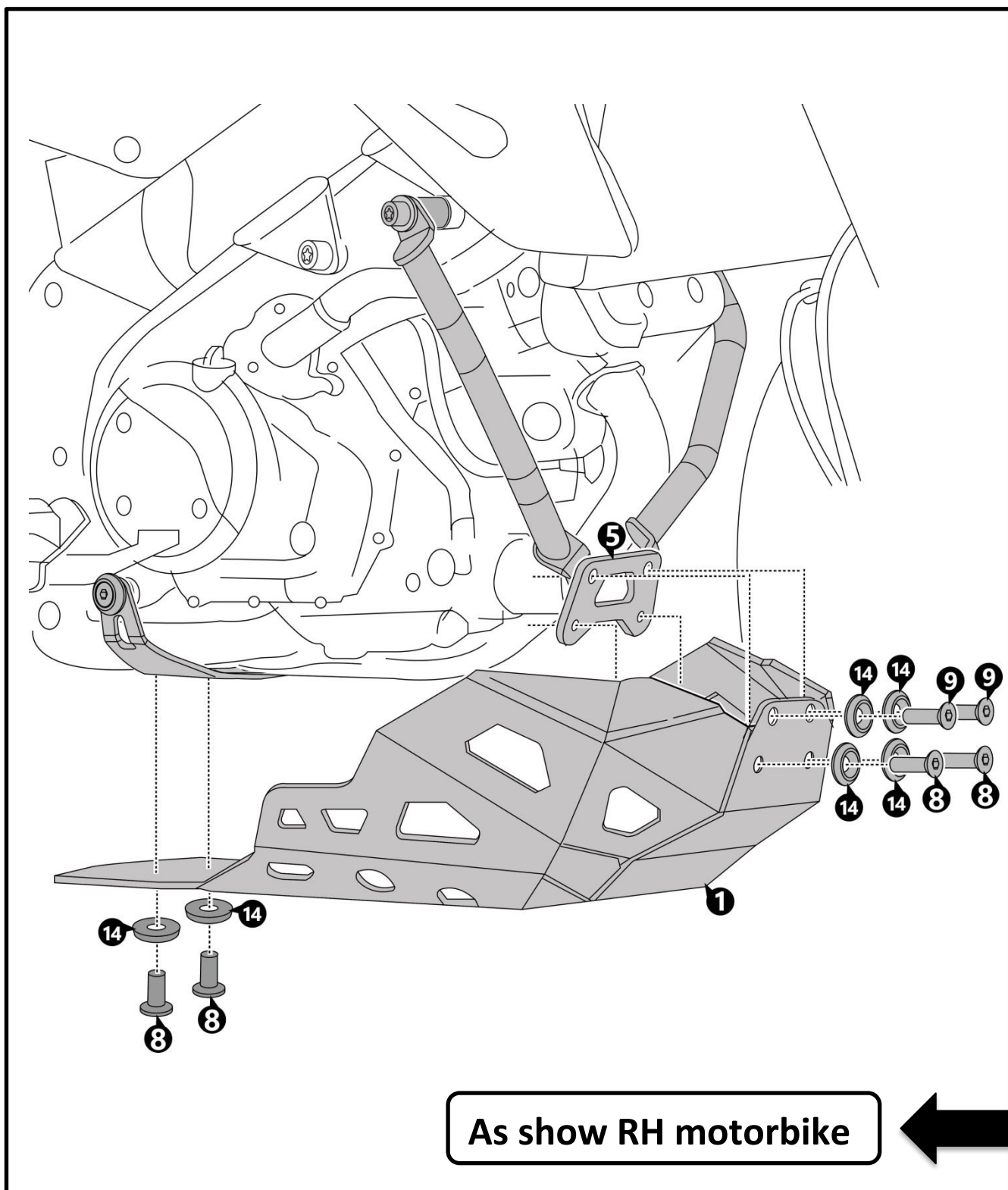
As show RH motorbike



**Orient the Bracket LH (3) and slip-in the Bush LH (6)-1 off, the washer M10 (13) – 1 off, the long bolt M10x115 (11)-1 off,**

**Orient the Bracket Lower (4) and slip-in the taper ring (15) – 1 off, the screw M8x30 (10) – 1 off,**

**And tighten it to torque as shown in the BOM table.**

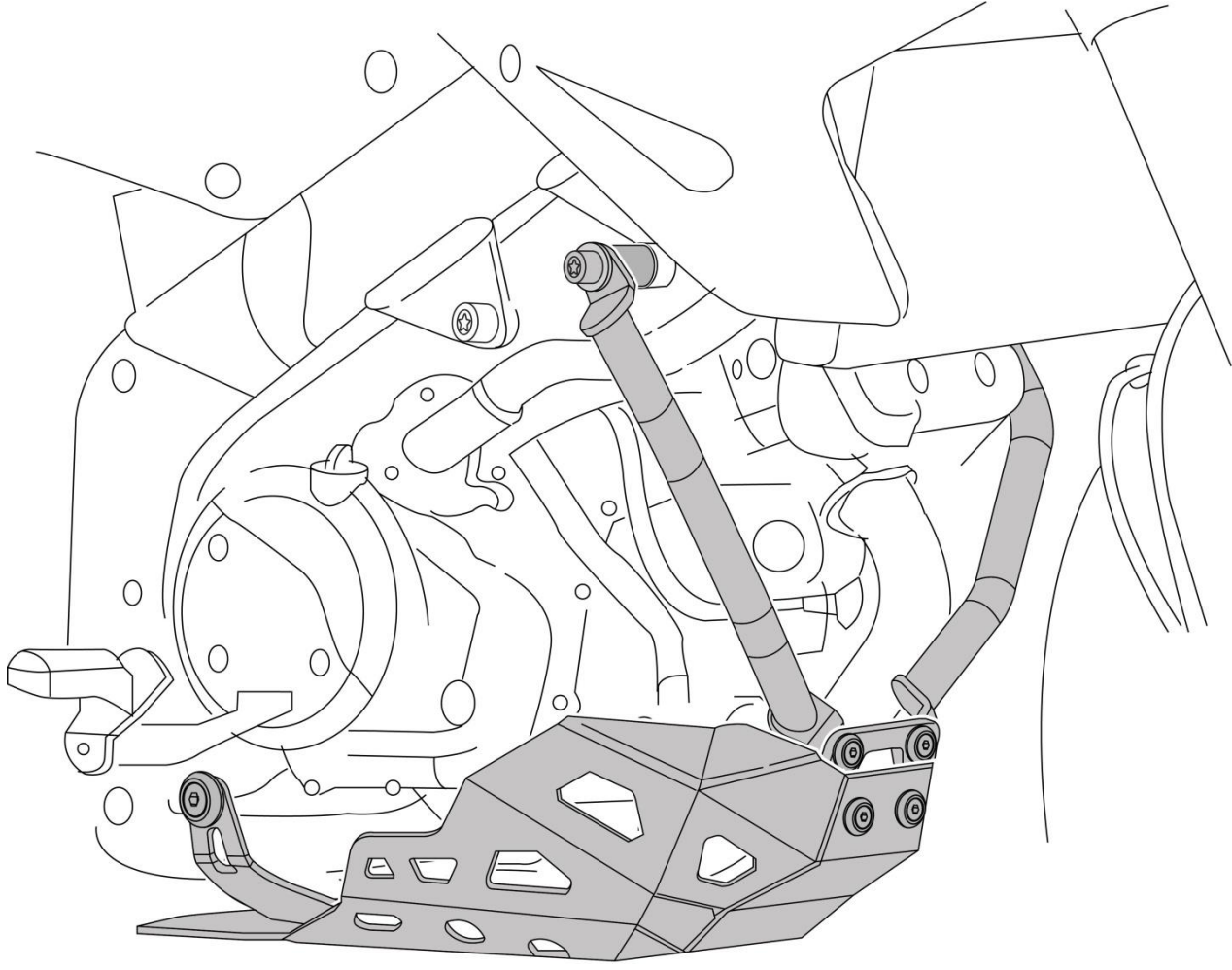


**Orient the Engine Guard (1) Bracket Front (5) at front side in motorbike and slip-in the Taper Ring M6 (14) – 2 off, the screw M6x20 (9) – 2 off,**

**Slip-in the Taper Ring M6 (14) – 2 off, the screw M6x15 (8) – 2 off,**

**And slip-in the Taper Ring M6 (14) – 2 off, the screw M6x15 (8) – 2 off, at the end side**

**And tighten it to torque as shown in the BOM table.**



**As show RH motorbike**



**Engine Guard in “As is mounted condition” is as shown in the drawing to the Right.**



## General Instructions

1. We request you to pay attention to the Mounting Instructions in this document and follow the step-by-step procedures.
2. This Mounting Instruction manual is a “Do It Yourself” (DIY) fitment manual of the Accessory part to the Vehicle. We have prepared this based on our experience and knowledge, related to the Vehicle, Part and its functional aspects.
3. SRC cannot guarantee the interchangeability of the parts to any other manufacturer’s accessory part. It is advised to the User, to inspect and ensure the original state of all other Vehicle parts.
4. We request you to bear in mind, that the Installed part can change the driving behaviour and/or the stability during driving or any other dynamic conditions.
5. If you have the appropriate tools and another person to assist you in the mounting, it will help.
6. After Completion of the Mounting and before taking on a First ride, Ensure and Check all functions of the Vehicle. It is always advised to check loosening of the fasteners after the first 50 kilo meters of ride and at regular intervals.
7. To the maximum extent possible, our design use the current Mounting/Fitment of the Original Equipment, so that Installation of these accessories will not affect the Payload or Function of the Vehicle or the Part on which it is mounted to protect it
8. If any additional modifications are to be done, prior to the fitment of the accessories, it will be explicitly specified in the instruction sheets