

Scope of Supply/Bill of Material & Mounting Drawings

Part Number: S-VS1050XT-01-01-SL / S-VS1050XT-01-02
 Part Description: Head Light Guard – SUZUKI V-STROM1050 XT
 Applicable to Finished colour versions of Black and Silver

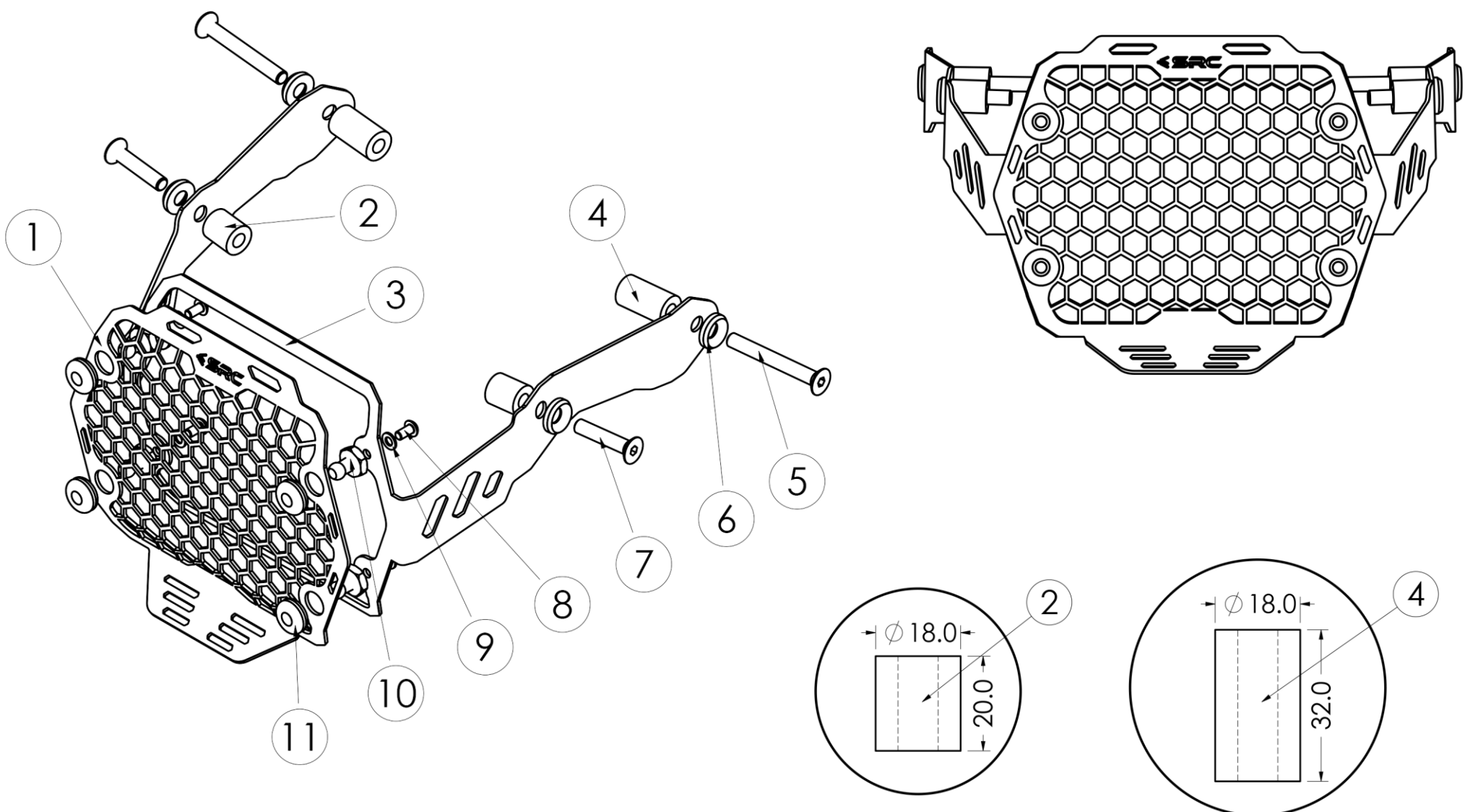
Installation / Parts List / Bill of Material for Mounting

NO.	Description	Quantity	Torque * (N-M)	Remarks **
1	Head Light Guard	1		
2	Bush AL M8 18x20	2		
3	Bracket Head Light Guard	1		
4	Bush AL M8 18x32	2		
5	Socket Conutersunk Head Screw M8x65	2	22 - 24	Use Liquid Thread Locker
6	Taper Ring M8	4		
7	Socket Conutersunk Head Screw M8x40	2	22 - 24	Use Liquid Thread Locker
8	Socket button Head Screw M5x10	4	5 - 6	Use Liquid Thread Locker
9	Washer M5	4		
10	Pin Bush	4		
11	Rubber Grommet	4		

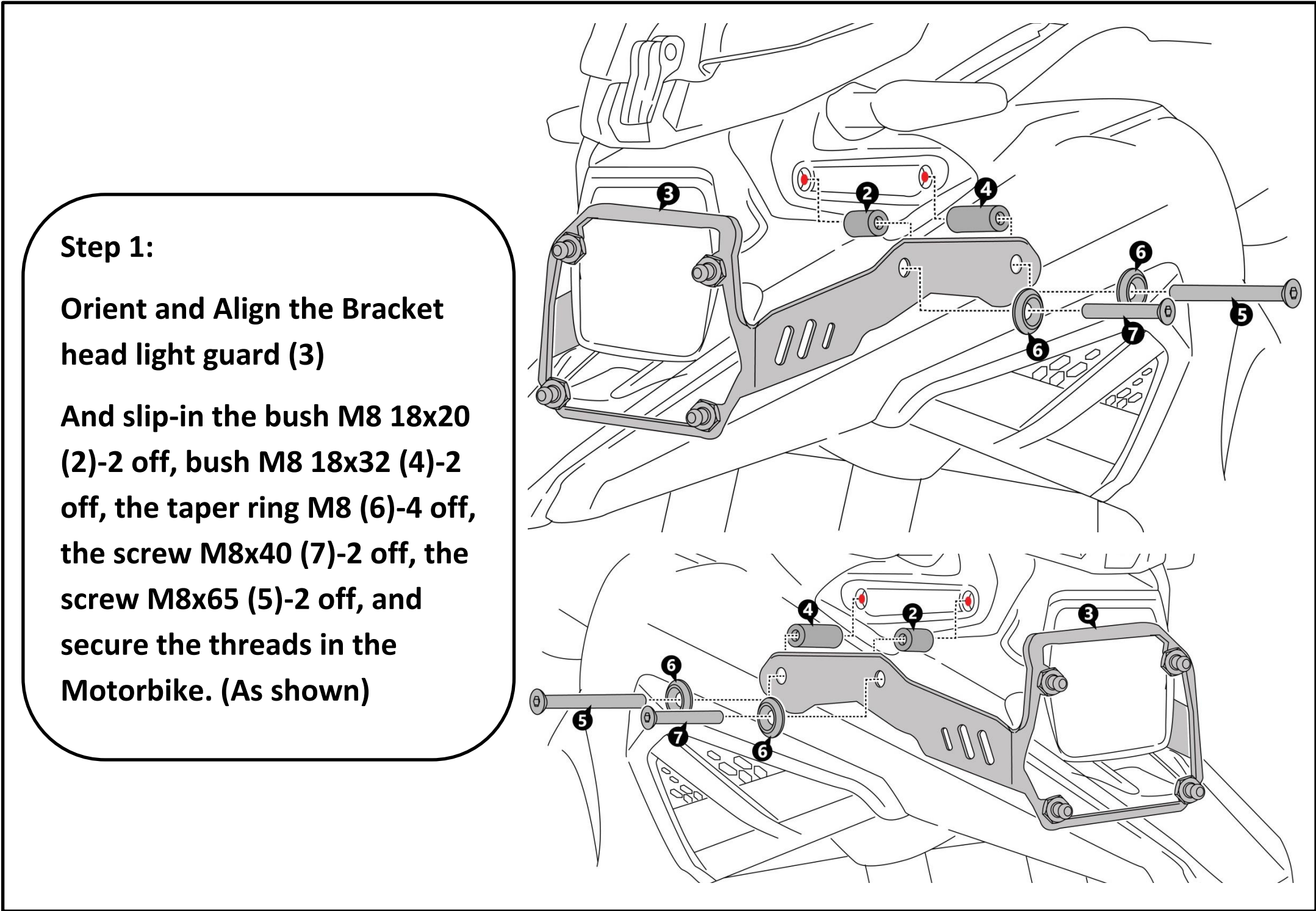
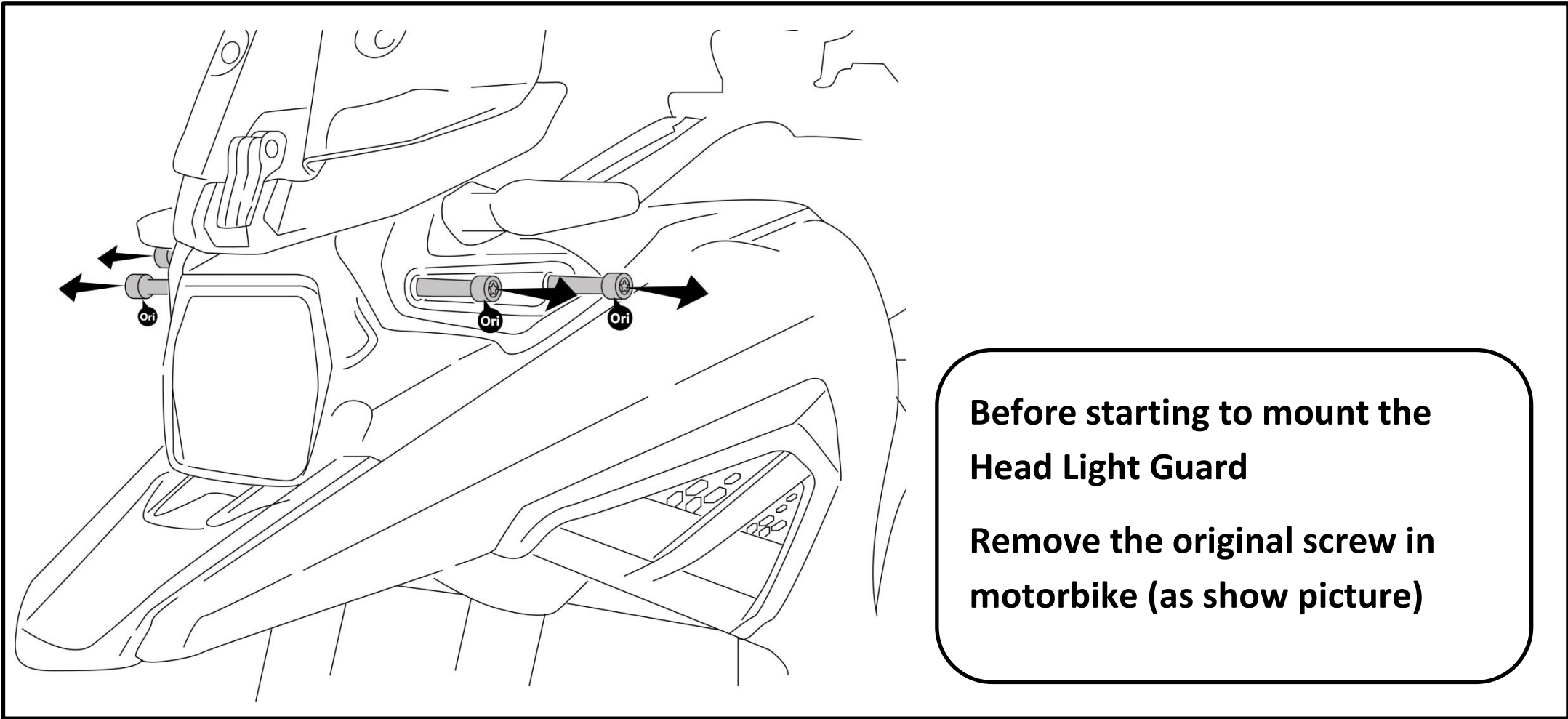
SRC Design uses Metric System of Measurement and all dimensions in Millimeters

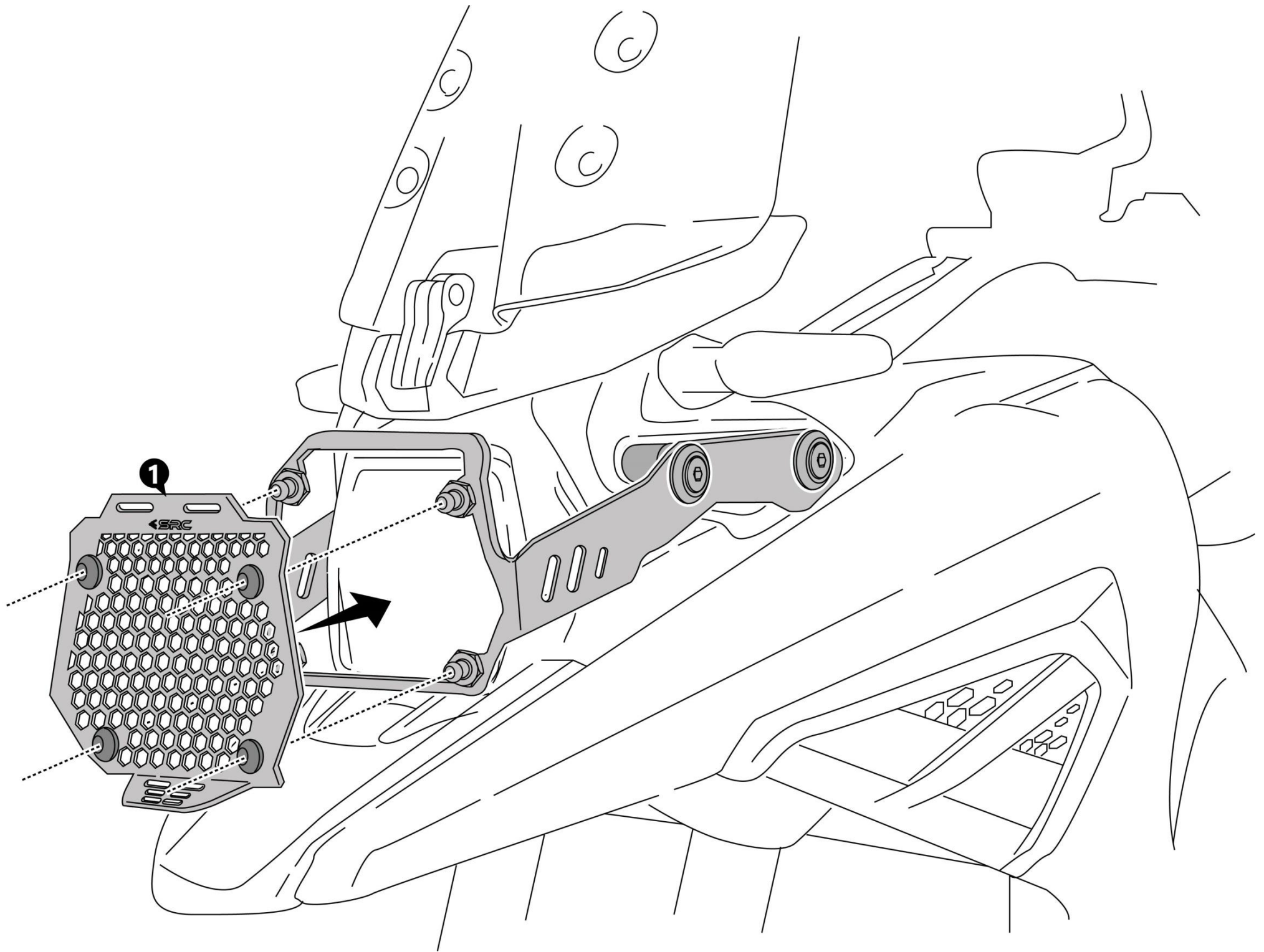
* Recommended to use the Torque specified in the table

** Denotes Usage of Liquid Thread Locker in specified Locations



Mounting Instructions





Step 2:

The final mounted condition of Head Light Guard.

Orient and Align the head light guard (1) to the bracket heat light guard (3)

(As shown)



General Instructions

1. We request you to pay attention to the Mounting Instructions in this document and follow the step-by-step procedures.
2. This Mounting Instruction manual is a “Do It Yourself” (DIY) fitment manual of the Accessory part to the Vehicle. We have prepared this based on our experience and knowledge, related to the Vehicle, Part and its functional aspects.
3. SRC cannot guarantee the interchangeability of the parts to any other manufacturer’s accessory part. It is advised to the User, to inspect and ensure the original state of all other Vehicle parts.
4. We request you to bear in mind, that the Installed part can change the driving behaviour and/or the stability during driving or any other dynamic conditions.
5. If you have the appropriate tools and another person to assist you in the mounting, it will help.
6. After Completion of the Mounting and before taking on a First ride, Ensure and Check all functions of the Vehicle. It is always advised to check loosening of the fasteners after the first 50 kilo meters of ride and at regular intervals.
7. To the maximum extent possible, our design use the current Mounting/Fitment of the Original Equipment, so that Installation of these accessories will not affect the Payload or Function of the Vehicle or the Part on which it is mounted to protect it
8. If any additional modifications are to be done, prior to the fitment of the accessories, it will be explicitly specified in the instruction sheets