

## Scope of Supply/Bill of Material & Mounting Drawings

Part Number: S-VS1000-17-17-01-SL / S-VS1000-17-17-02  
 Part Description: Crash Bar – SUZUKI V-STROM1000 / 2017 -2019  
 Applicable to both Stainless Steel and Steel Versions

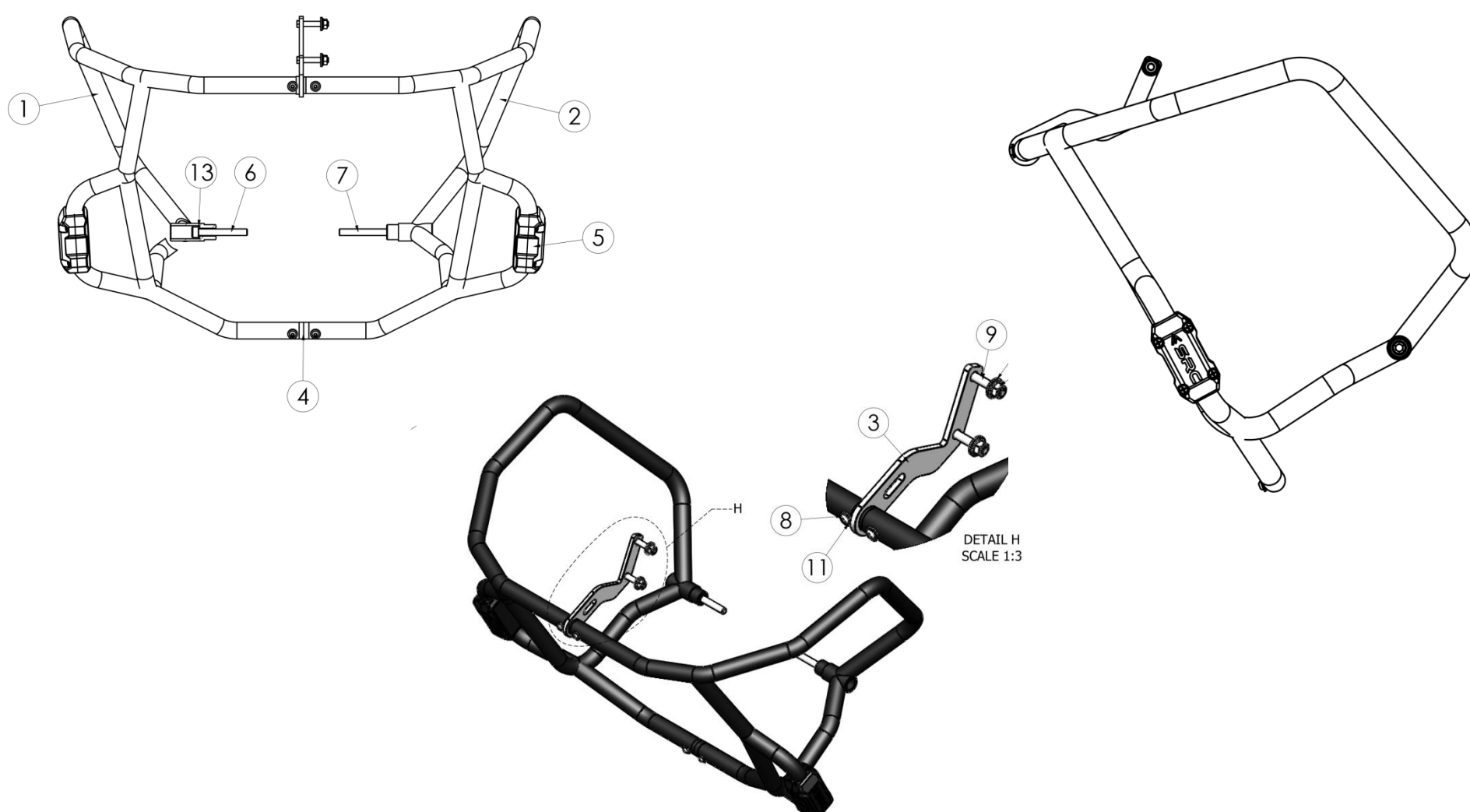
### Installation / Parts List / Bill of Material for Mounting

NO.	Description	Quantity	Torque * (N-M)	Remarks **	Check List
1	CrashBar RH	1			
2	CrashBar LH	1			
3	Upper Bracket	1			
4	Pin pipe	1			
5	Slider Guards	2			
6	Socket head cap Screw M10x1.25 L75	1	44 - 48	Use Liquid Thread Locker	
7	Socket head cap Screw M10x1.25 L100	1	44 - 48	Use Liquid Thread Locker	
8	Socket buttonhead Screw M6x15	4	9 - 10	Use Liquid Thread Locker	
9	Hex flange bolt M8x40	2	22 - 24	Use Liquid Thread Locker	
10	Nut M8	2			
11	Washer M6	4			
12	Washer M8	2			
13	Washer M10	2			

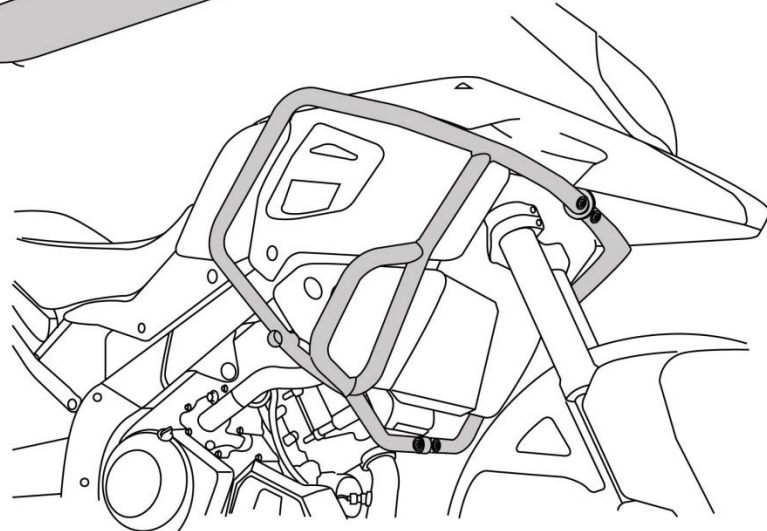
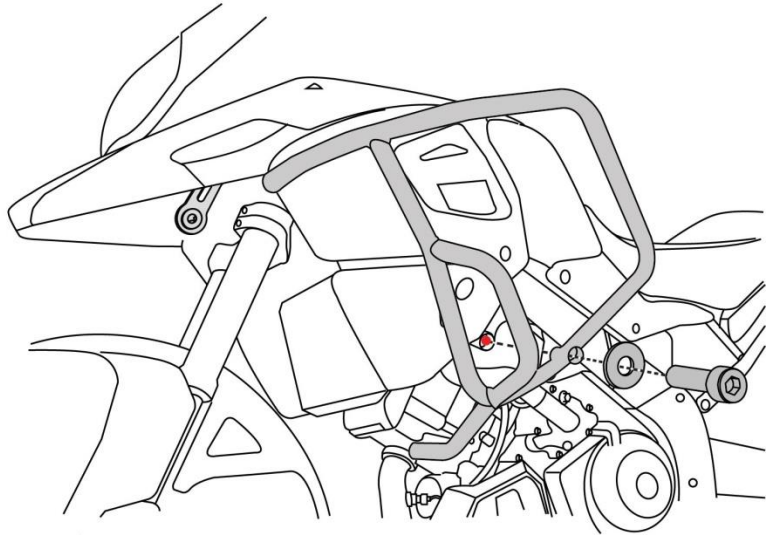
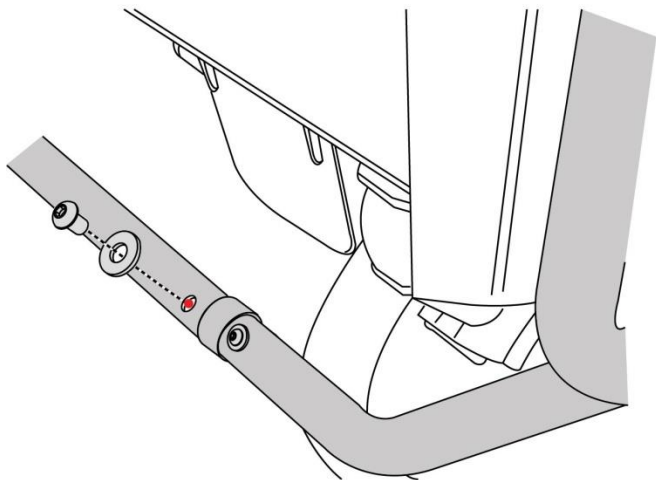
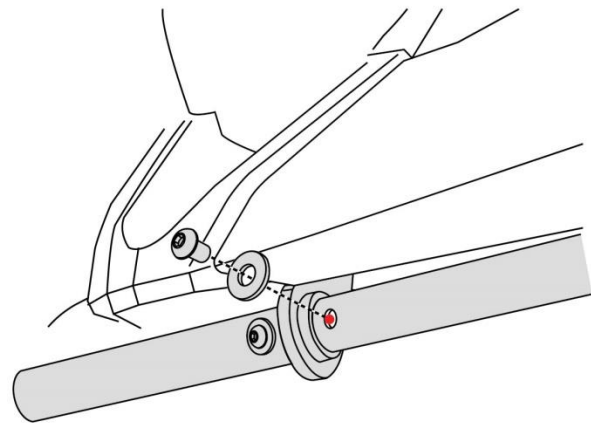
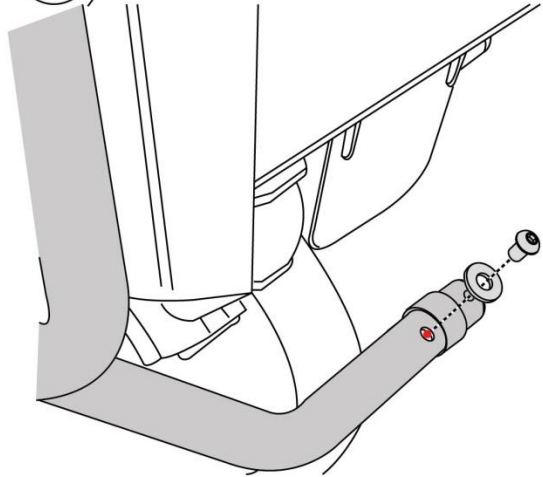
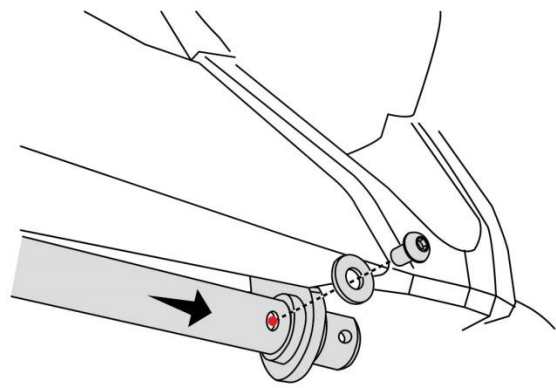
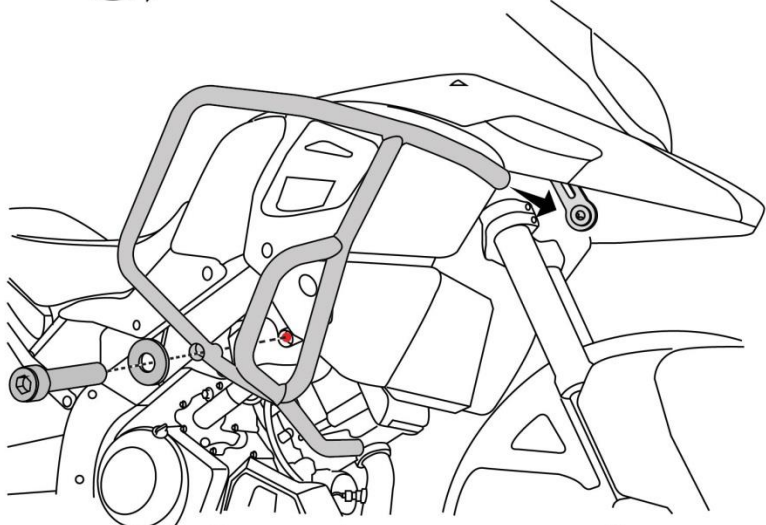
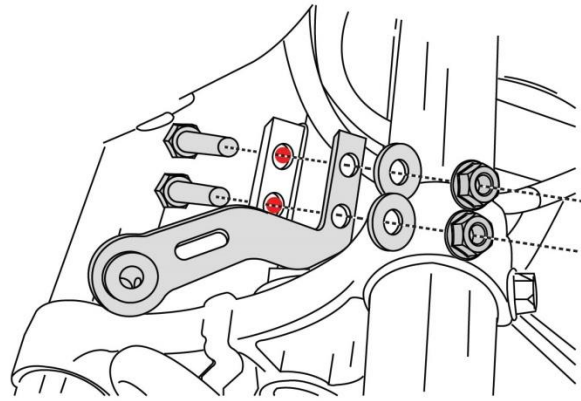
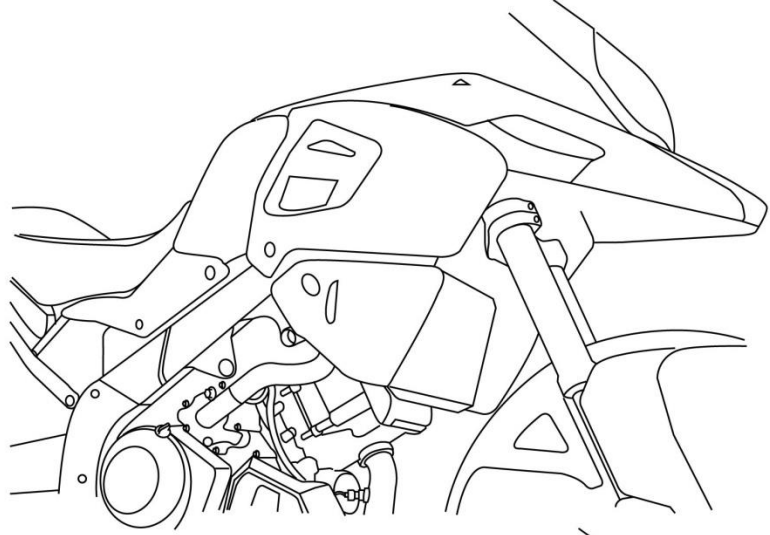
SRC Design uses Metric System of Measurement and all dimensions in Millimeters

\* Recommended to use the Torque specified in the table

\*\* Denotes Usage of Liquid Thread Locker in specified Locations

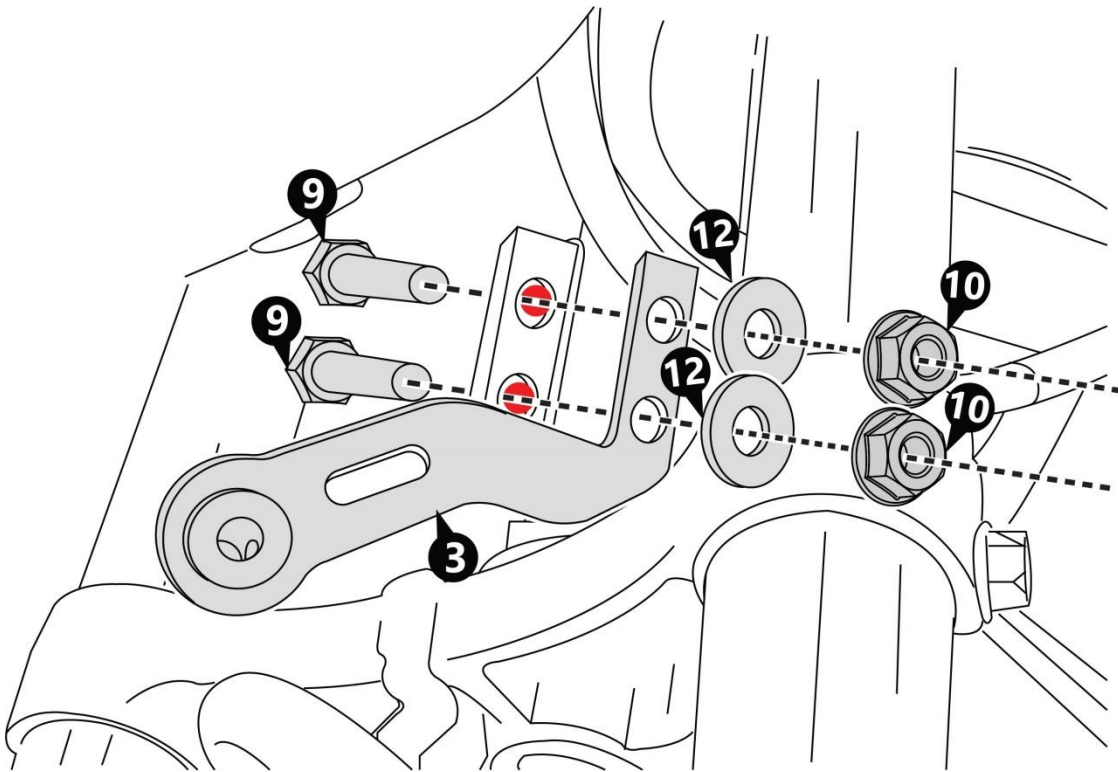
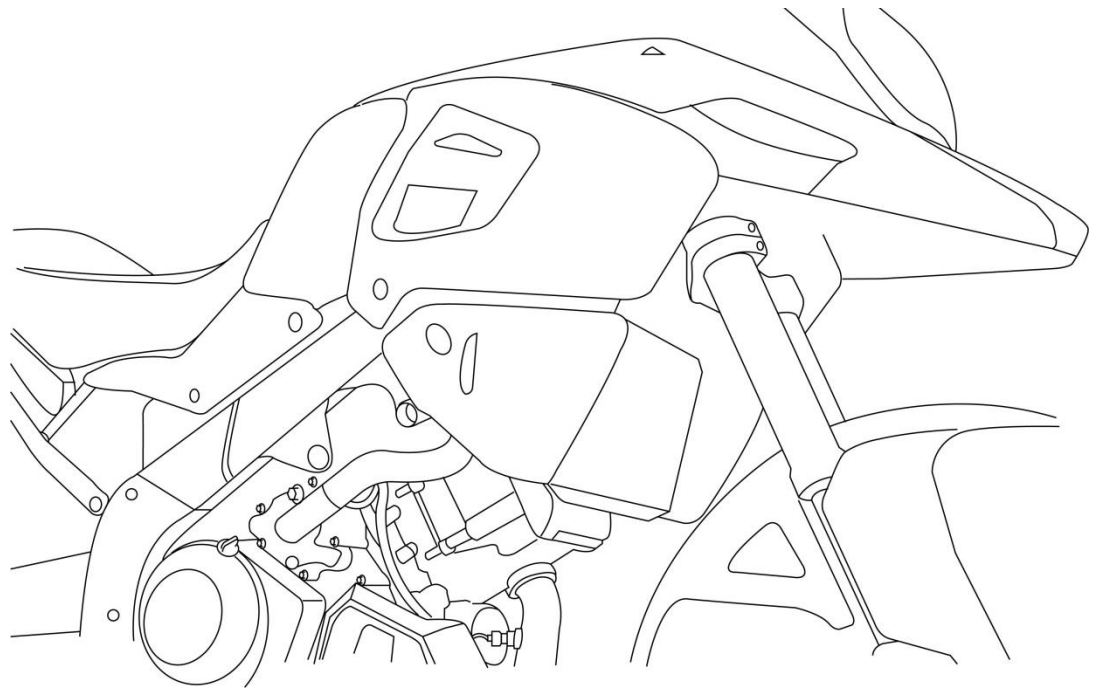


Mounting Drawings



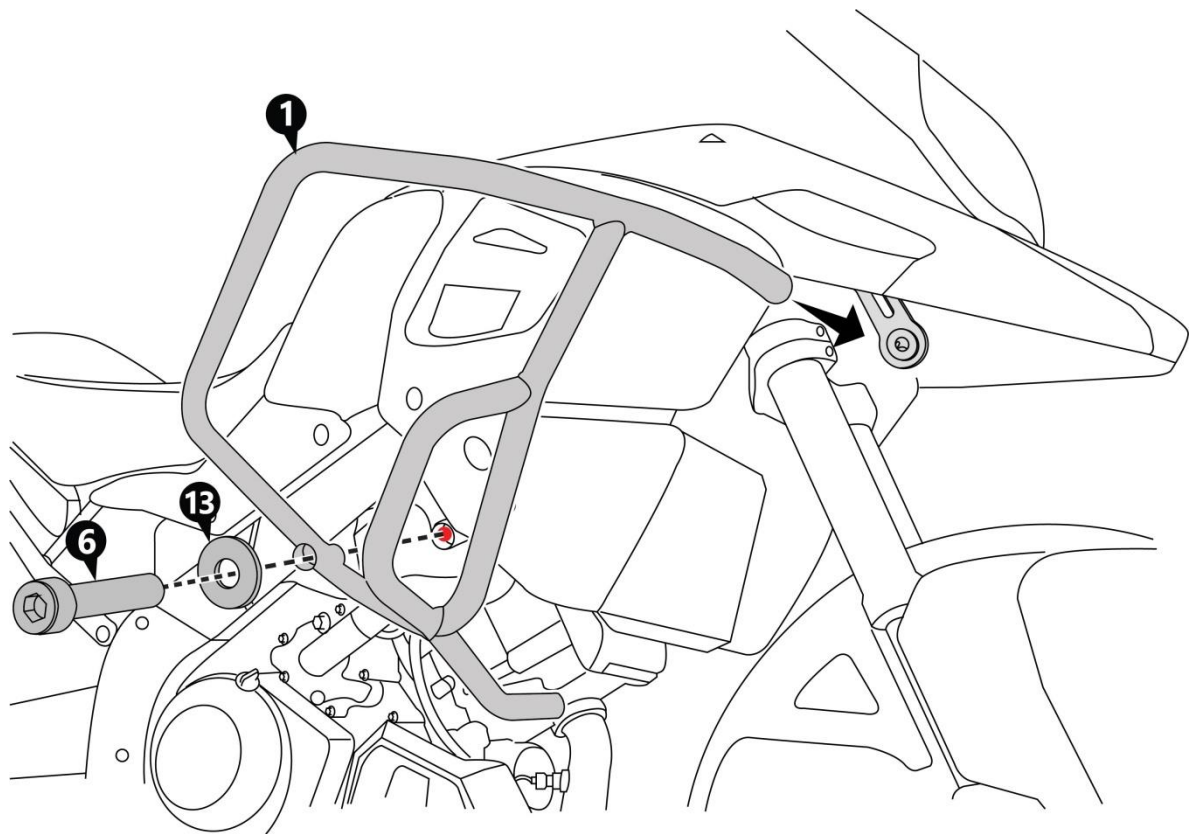
## Mounting Instructions

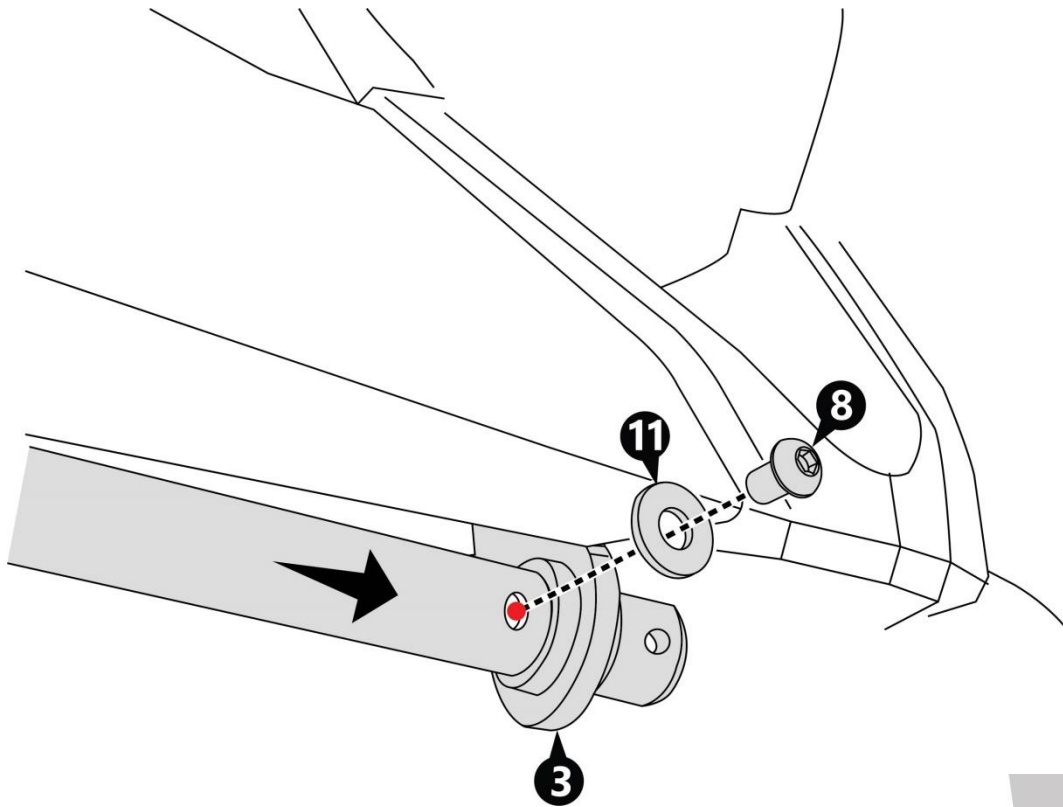
Drawing on the right-hand side shows the view of the Front Forks and through which we have to access for mounting the Upper Bracket to the mounting points.



**Step 1:**  
 Orient and align the Upper Bracket (3) as shown.  
 Slip-in Hex Bolt M8 x 40 (9) – 2 off, from the other side of the gusset plate in the Front fork and the shank passing through the 2 Mounting points, as shown in Red colour.  
 Secure the threads in the Hex Bolt, using Washer M8 (12) – 2 off and Nut M8 (10) – 2 off.

**Step 2:**  
 Orient and align Crash Bar RH (1), as shown, with the top end in-line with the Pin-pipe attached to the Upper Bracket (3).  
 Align the Far end, in-line with the Mounting point, shown in red colour, and insert Washer M10 (13) – 1 off and Screw M10 x 1.25 L 75 (6) – 1 off and secure the threads.



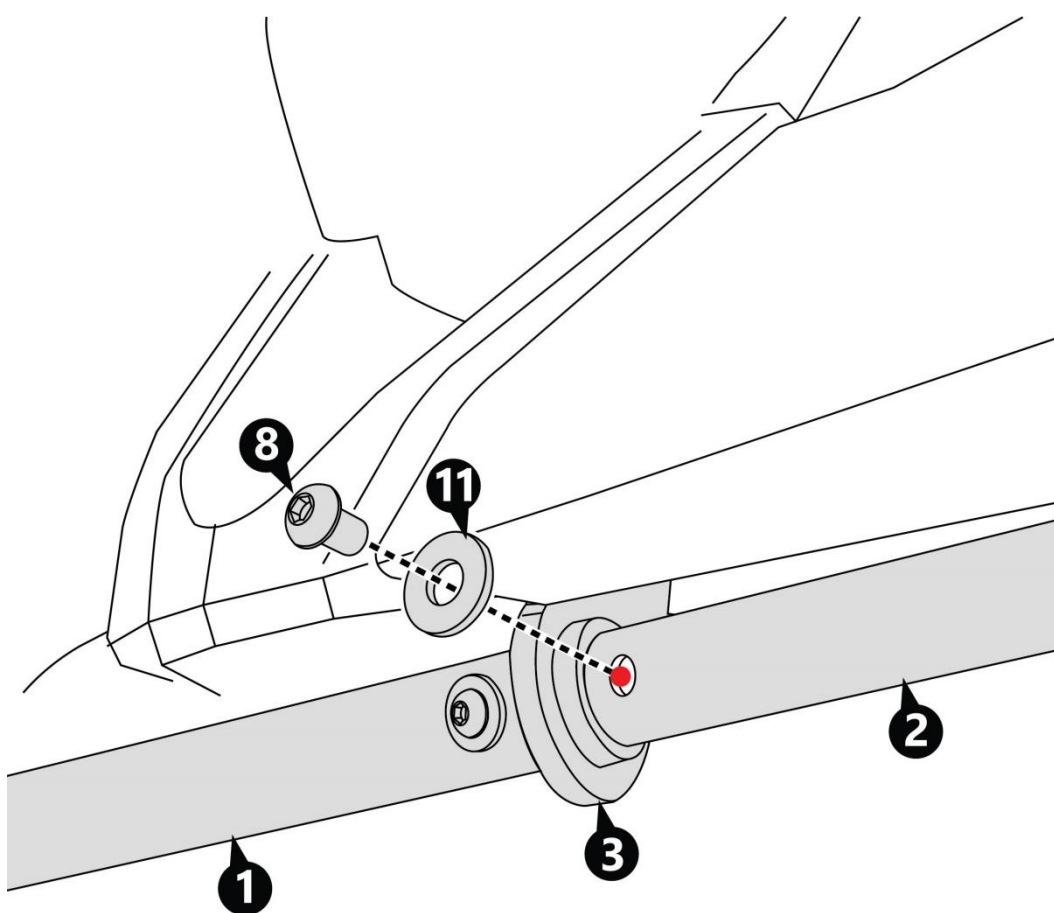
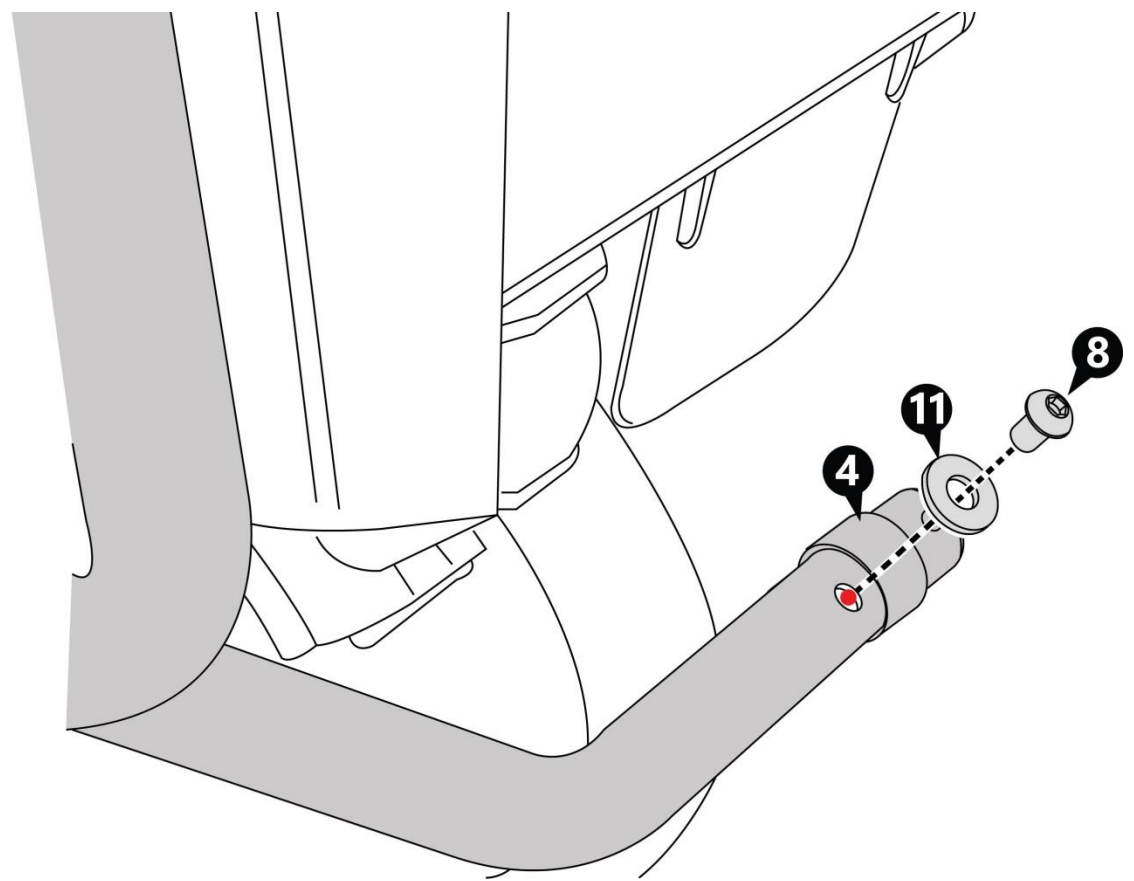


**Step 3:**

Mount the hollow end of the Top side of the Crash Bar, through the Pin-pipe attached to the Upper Bracket (3) and secure it to the threaded hole in the Pin-pipe, using Washer M6 (11) – 1 off and Screw M6 x 15 (8) – 1 off.

**Step 4:**

Align the bottom side of the Crash Bar – RH and insert Pin Pipe (4) – 1 off and secure it to the threaded hole in the Pin-pipe, using Washer M6 (11) – 1 off and Screw M6 x 15 (8) – 1 off.

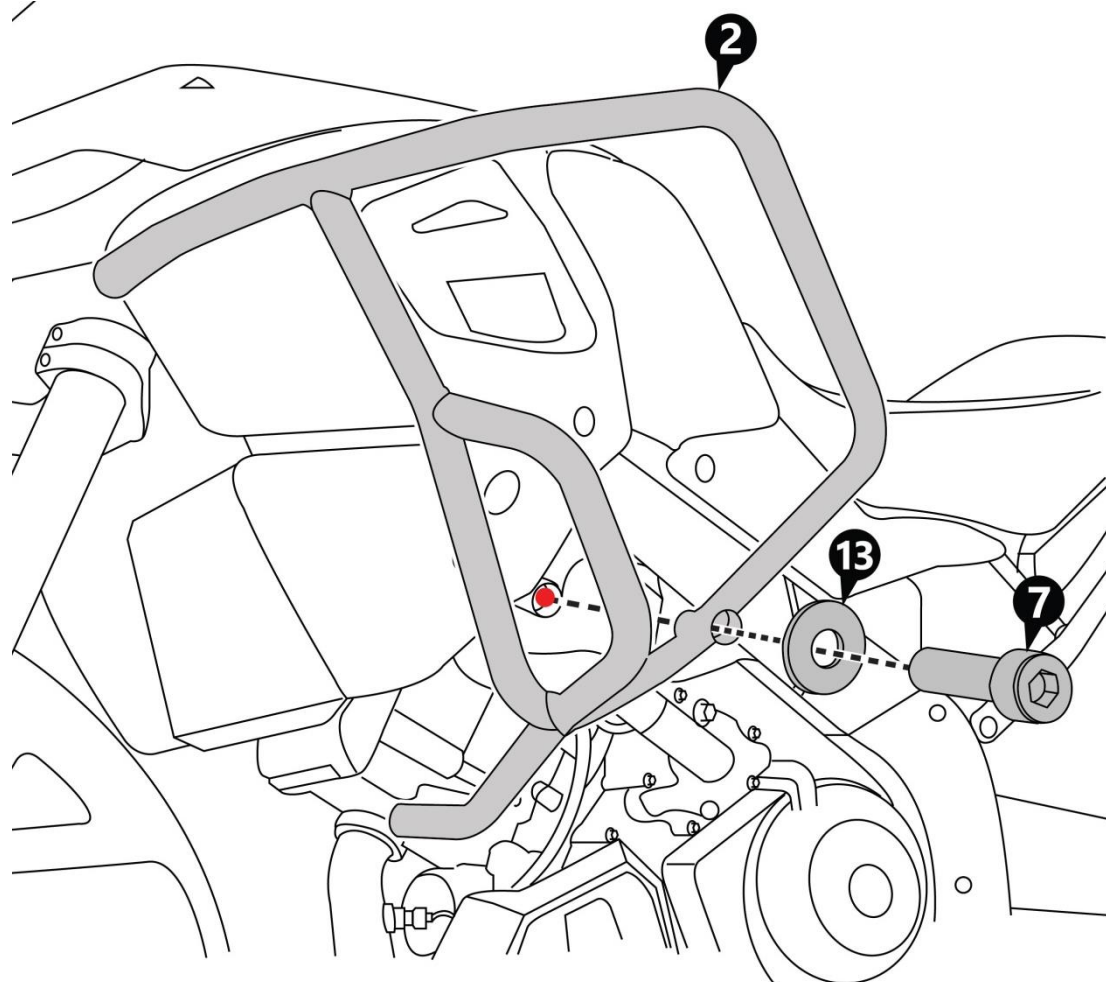
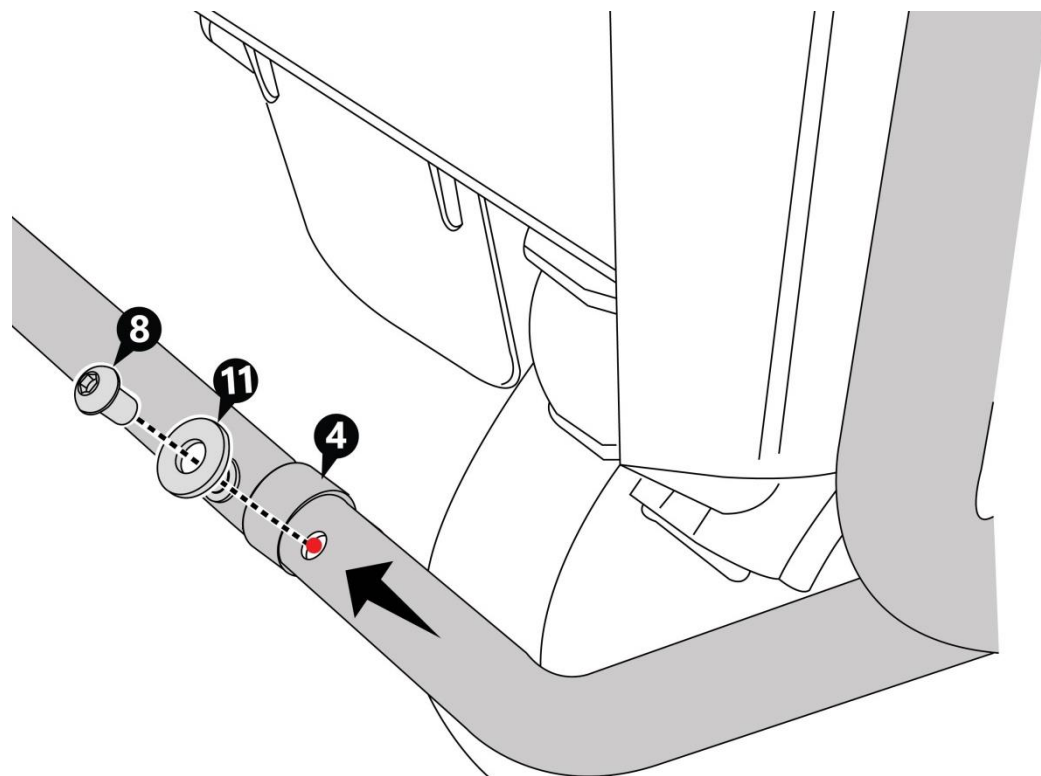


**Step 5:**

Mount the hollow end of the Top side of the Crash Bar, through the Pin-pipe attached to the Upper Bracket and secure it to the threaded hole in the Pin-pipe, using Washer M6 (11) – 1 off and Screw M6 x 15 (8) – 1 off.

**Step 6:**

Align the bottom side of the Crash Bar – LH and insert it to the Pin Pipe (4) – 1 off and secure it to the threaded hole in the Pin-pipe, using Washer M6 (11) – 1 off and Screw M6 x 15 (8) – 1 off.



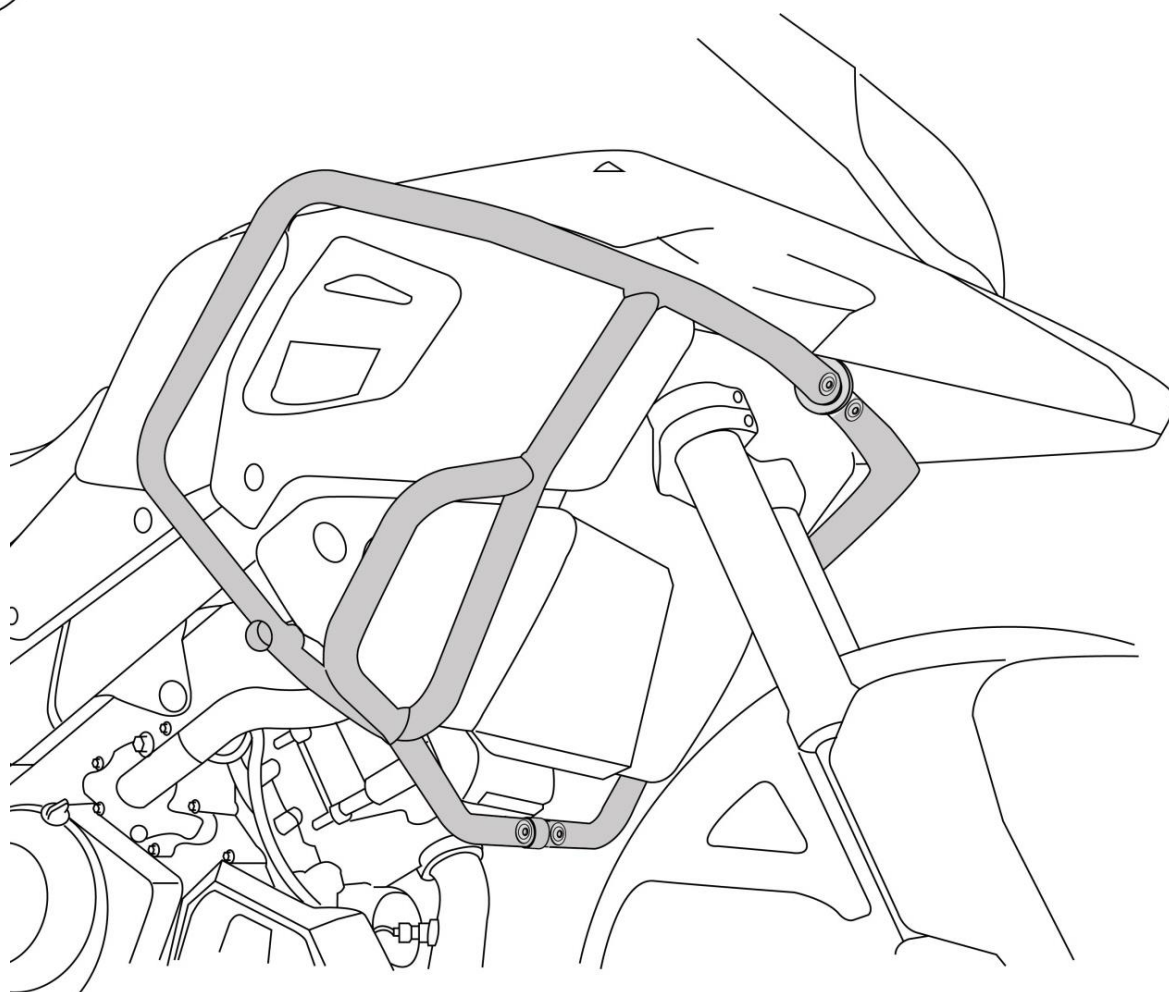
**Step 7:**

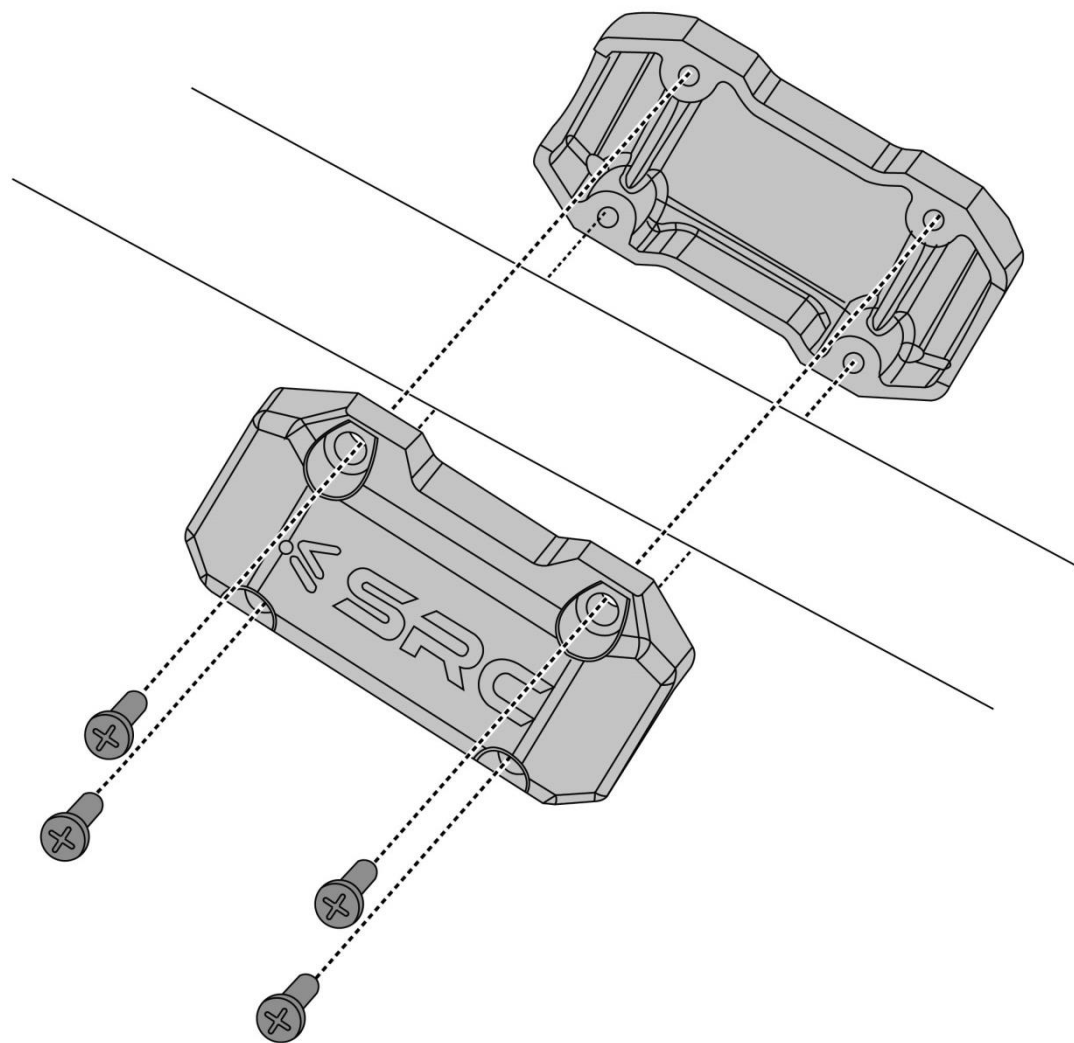
Orient and align Crash Bar LH (2), as shown, with the top end in-line with the Pin-pipe attached to the Upper Bracket.

Align the Far end, in-line with the Mounting point, shown in red colour, and insert Washer M10 (13) – 1 off and Screw M10 x 1.25 L 100 (7) – 1 off and secure the threads.

**Step 8:**

Check the Orientation symmetry of the Crash Bar RH and LH and ensure it is as shown in the drawing on the right-hand side.





**Step 9:**

**Assemble the Slider Bar on each of the Crash Bar's Wing as shown.**

**Use the Slider Bar as the Virtual Orientation and looking from the front side of the Motorbike, make one final Positioning and Alignment of the Crash bars.**

**Ensure mounting symmetry of the Slider Bars visually (it must not be offset or shifted visually when seen from the front side and back side).**

**All Screws can be fully tightened to the torque, as specified in the BOM table.**

**The installation is completed with this step.**

## General Information

1. We request you to pay attention to the Mounting Instructions in this document and follow the step-by-step procedures.
2. This Mounting Instruction manual is a “Do It Yourself” (DIY) fitment manual of the Accessory part to the Vehicle. We have prepared this based on our experience and knowledge, related to the Vehicle, Part and its functional aspects.
3. SRC cannot guarantee the interchangeability of the parts to any other manufacturer’s accessory part. It is advised to the User, to inspect and ensure the original state of all other Vehicle parts.
4. We request you to bear in mind, that the Installed part can change the driving behaviour and/or the stability during driving or any other dynamic conditions.
5. If you have the appropriate tools and another person to assist you in the mounting, it will help.
6. To the maximum extent possible, our design use the current Mounting/Fitment of the Original Equipment, so that Installation of these accessories will not affect the Payload or Function of the Vehicle or the Part on which it is mounted to protect it
7. If any additional modifications are to be done, prior to the fitment of the accessories, it will be explicitly specified in the instruction sheets.

The Mounting Instructions can also be downloaded from SRC Website.