

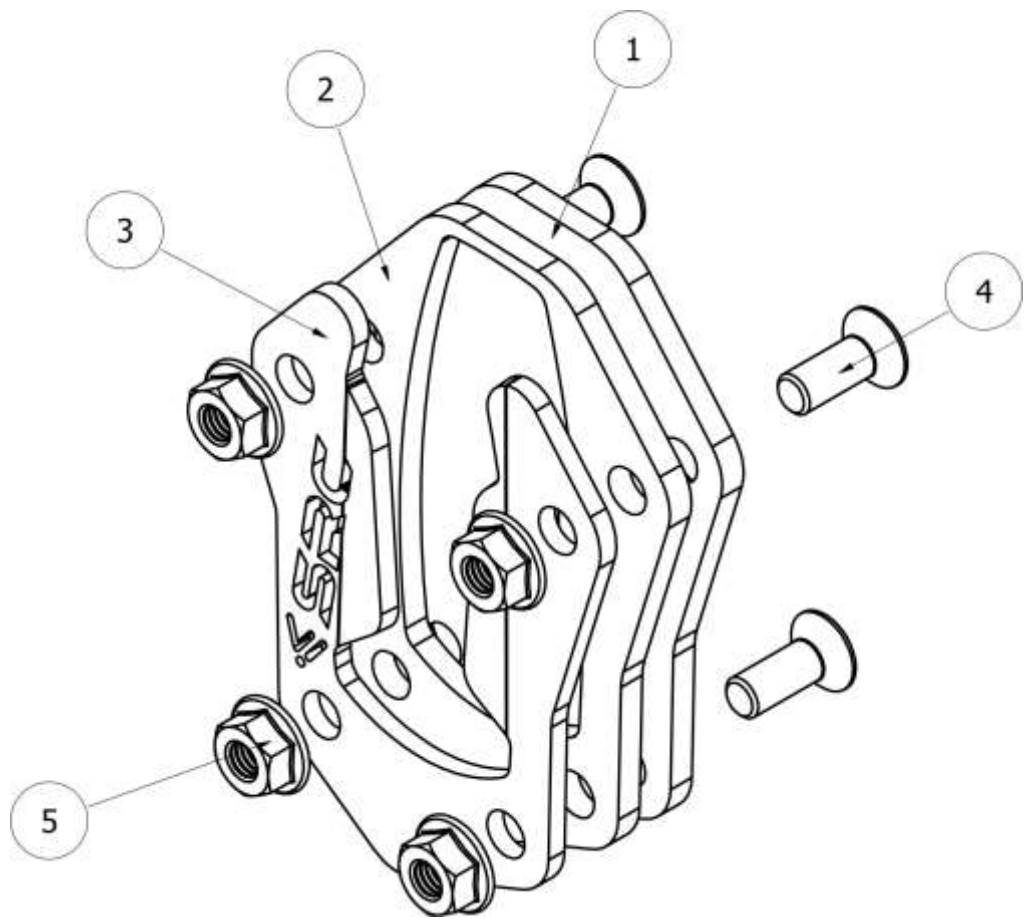
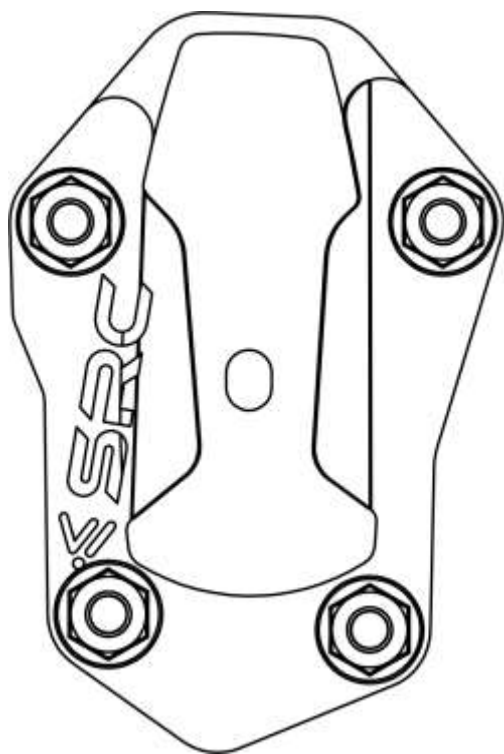
Scope of Supply/Bill of Material & Mounting Drawings

Part Number: S-VS1000-14-01-SL

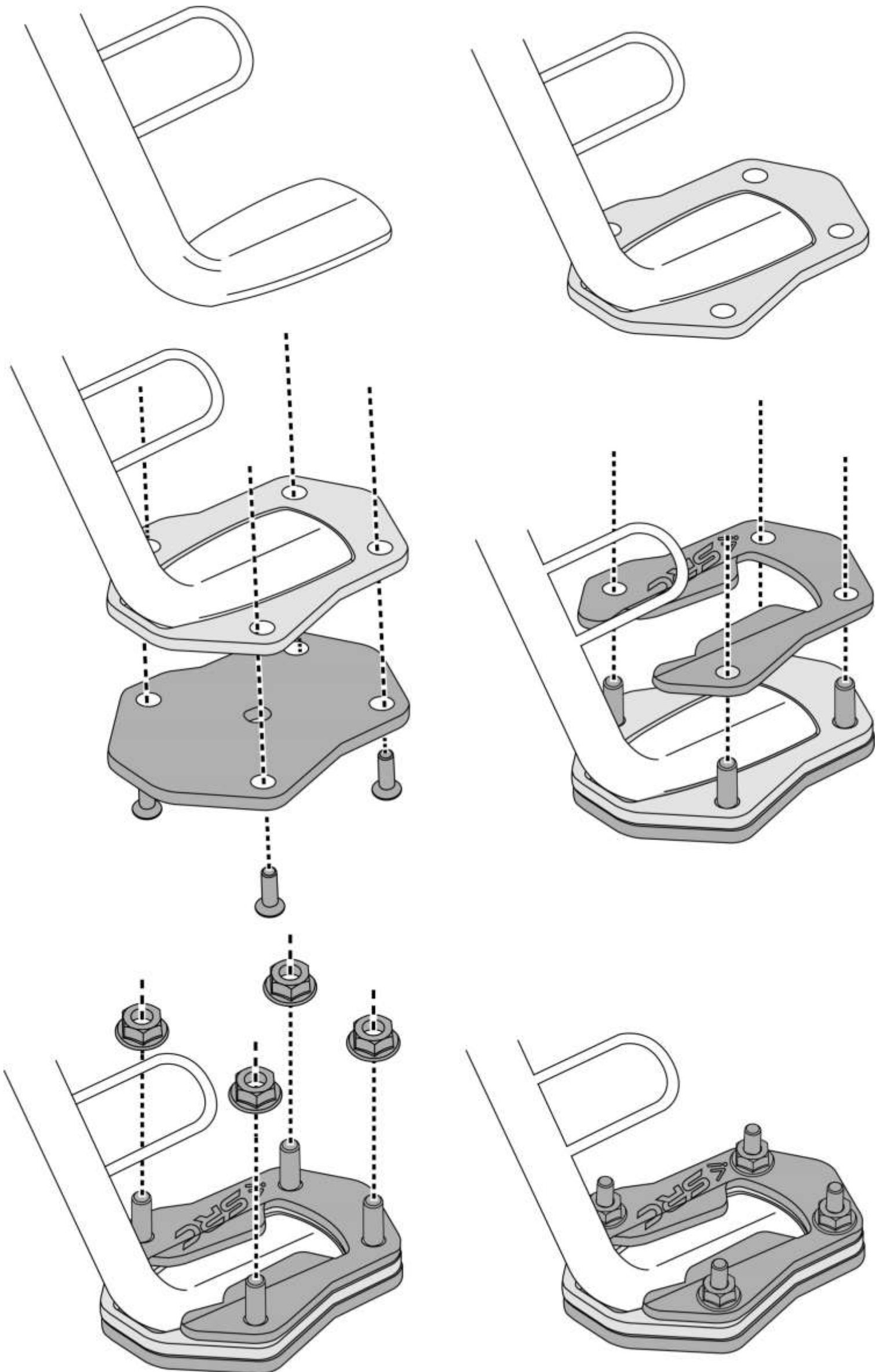
Part Description: Large Side Stand – SUZUKI V-STROM1000

Installation / Parts List / Bill of Material for Mounting

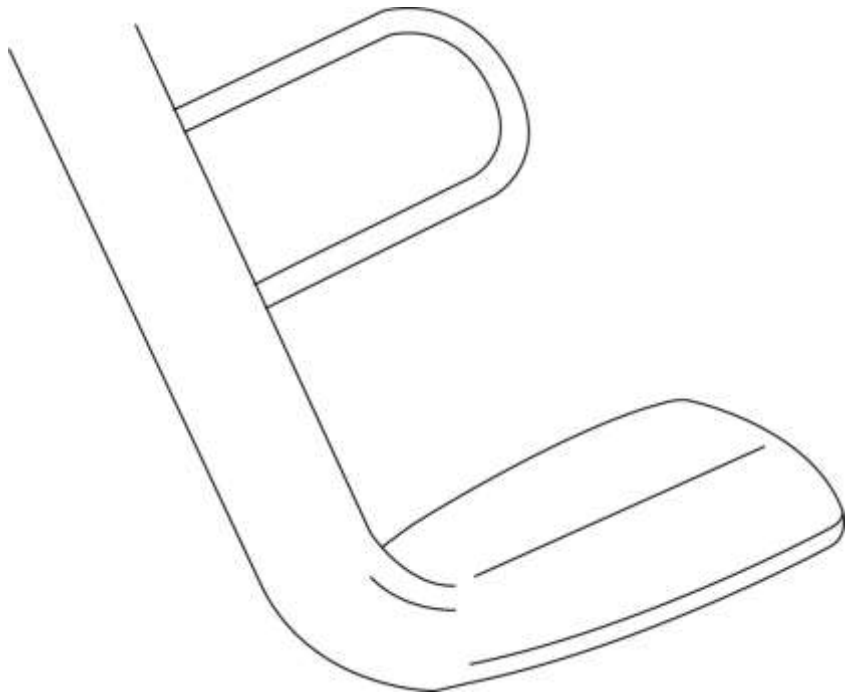
NO.	Description	Quantity	Torque * (N-M)	Remarks **	Check List
1	Bottom Plate	1			
2	Middle Plate	1			
3	Top Plate	1			
4	Countersink Screw M6 X 16	4			
5	Nut M6	4	10 - 12	Use Liquid Thread Locker	
SRC Design uses Metric System of Measurement and all dimensions in Millimeters					
* Recommended to use the Torque specified in the table					
** Denotes Usage of Liquid Thread Locker in specified Locations					



MOUNTING DRAWINGS



Mounting Instructions



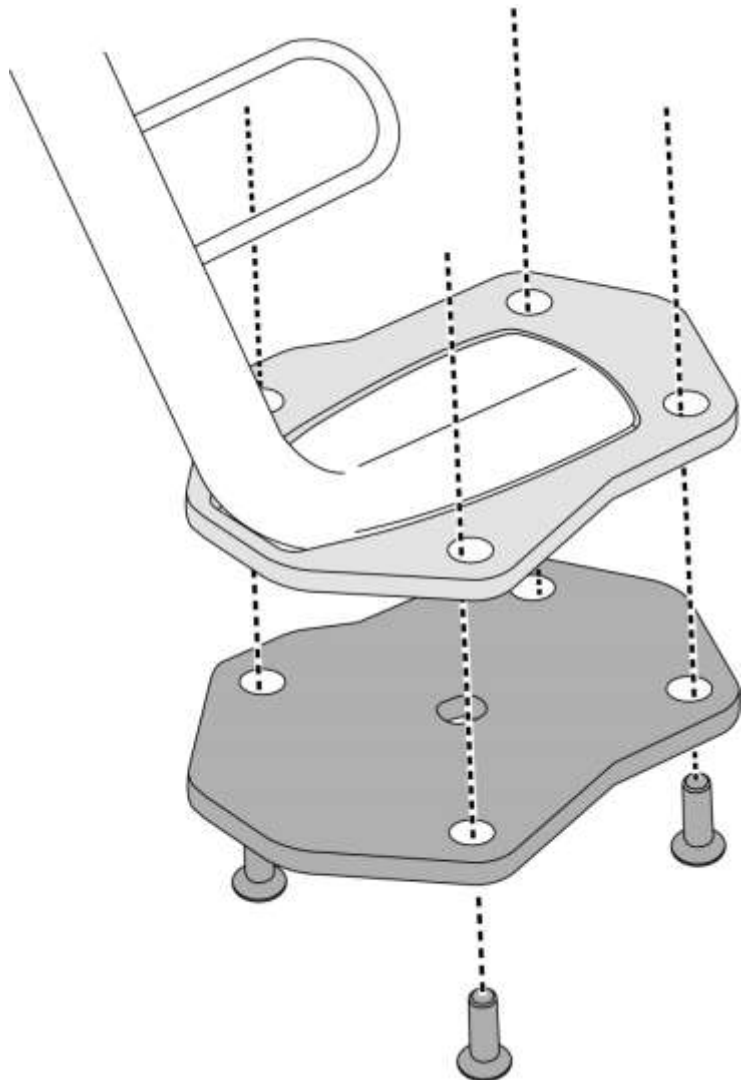
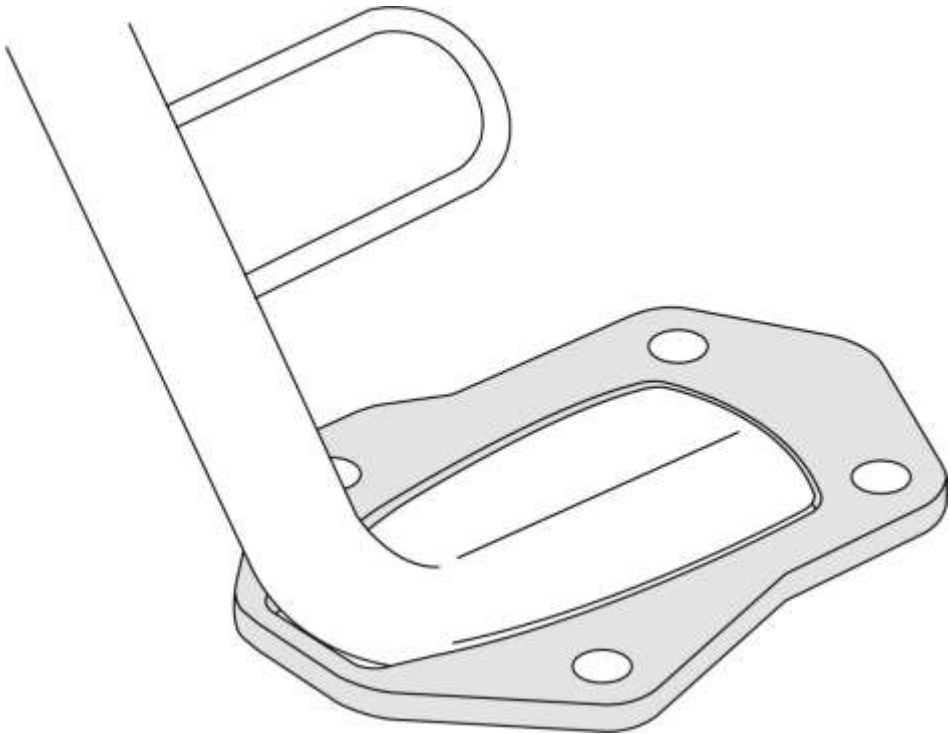
The Motorbike has to be held using the central stand, and Side Stand, drawn to the sides, to have access to the mounting of Large Side stand.

Side Stand looks as shown, prior to the Start of the Installation of SRC Large Side Stand.

Step 1:

Orient, Align and slip-in the Middle Plate (2), as shown in the drawing.

The Inner walls of the Middle plate will closely hug the outer peripheral walls of the Side stand base, as shown.



Step 2:

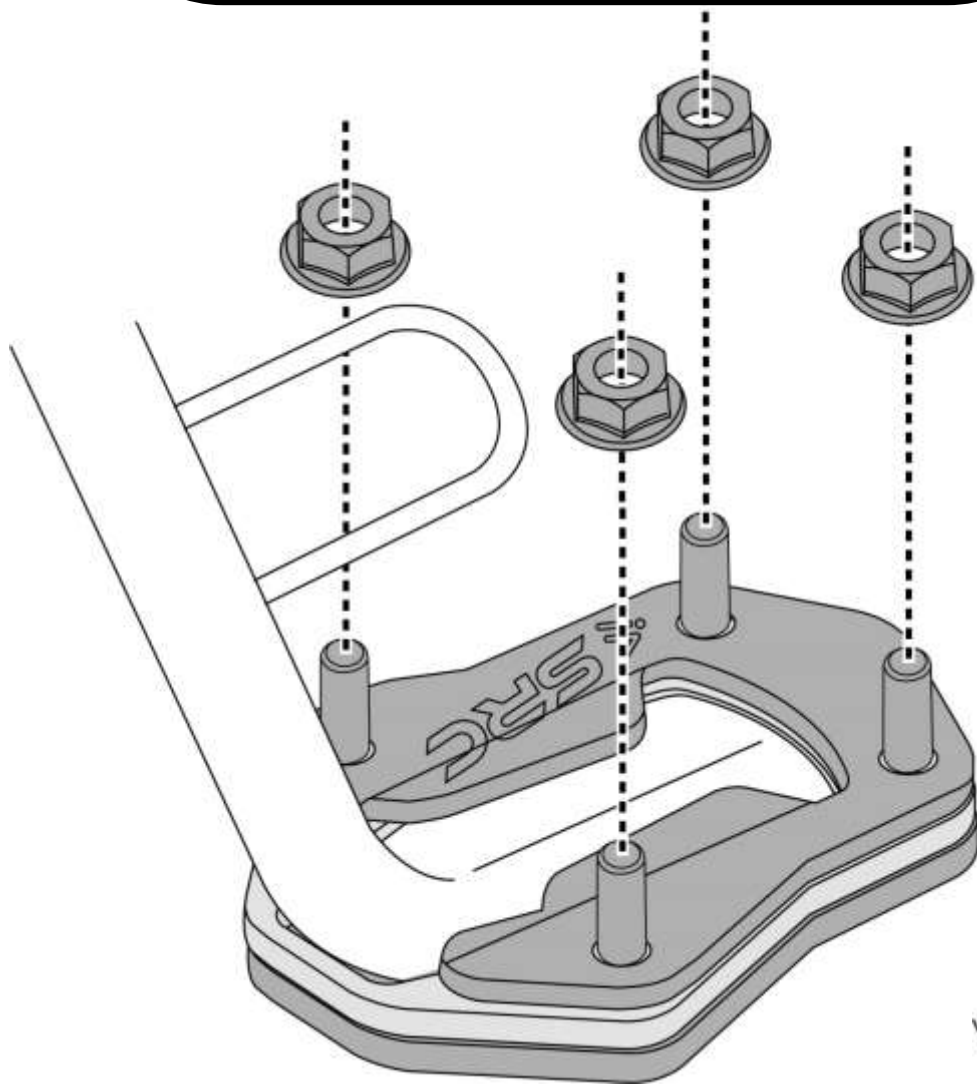
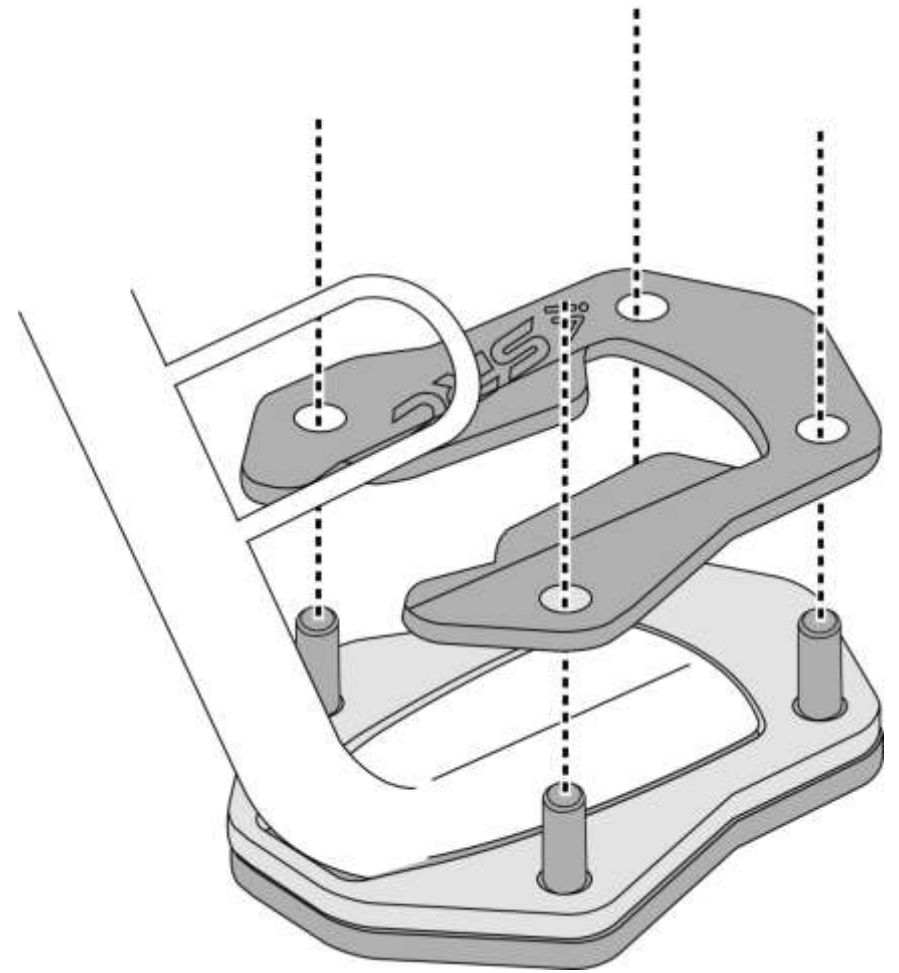
Orient and align the Lower Plate (1), in-line with the 4 Mounting holes of the Middle plate as shown.

Slip-in the Countersunk Screw M6 x 16 (4) – 4 off, as shown.

Step 3:

The 4 off Countersunk screws have the countersunk profile, which flushes with the countersunk bore on the bottom of the lower plate.

Orient and align the Upper Plate (3), as shown, in-line with the 4 off Screws projecting out.



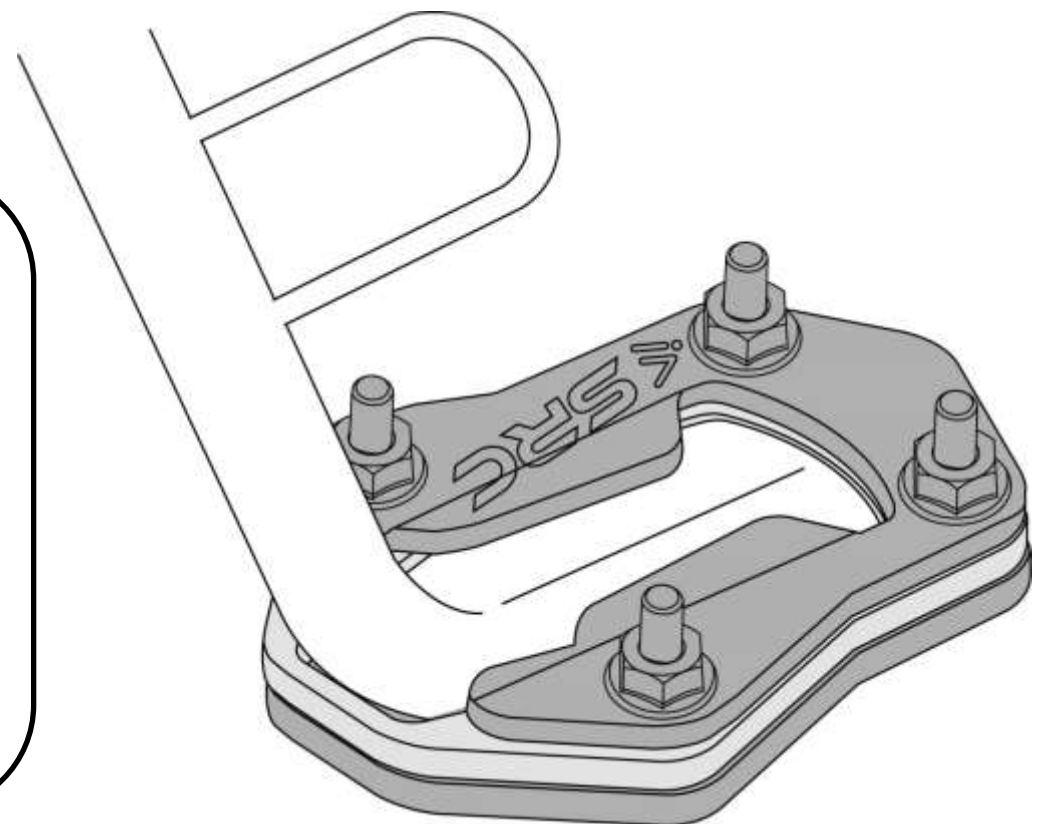
Step 4:

Slip-in the Nut M6 (5) – 4 off as shown in-line with the Screws and the plate cluster as shown.

Step 5:

Adjust the Plate cluster for any slackness and tighten the Nuts to torque, as per specification in the BOM table.

The final mounted condition of the Side Stand is as shown on the drawing.





General Instructions

- 1. We request you to pay attention to the Mounting Instructions in this document and follow the step-by-step procedures.**
- 2. This Mounting Instruction manual is a “Do It Yourself” (DIY) fitment manual of the Accessory part to the Vehicle. We have prepared this based on our experience and knowledge, related to the Vehicle, Part and its functional aspects.**
- 3. SRC cannot guarantee the interchangeability of the parts to any other manufacturer’s accessory part. It is advised to the User, to inspect and ensure the original state of all other Vehicle parts.**
- 4. We request you to bear in mind, that the Installed part can change the driving behaviour and/or the stability during driving or any other dynamic conditions.**
- 5. If you have the appropriate tools and another person to assist you in the mounting, it will help.**
- 6. After Completion of the Mounting and before taking on a First ride, Ensure and Check all functions of the Vehicle. It is always advised to check loosening of the fasteners after the first 50 kilo meters of ride and at regular intervals.**
- 7. We are showing here the Scope of Supply/ Installation/Parts list & BOM from SRC**
- 8. To the maximum extent possible, our design use the current Mounting/Fitment of the Original Equipment, so that Installation of these accessories will not affect the Payload or Function of the Vehicle or the Part on which it is mounted to protect it**
- 9. If any additional modifications are to be done, prior to the fitment of the accessories, it will be explicitly specified in the instruction sheets.**