

Scope of Supply/Bill of Material & Mounting Drawings

Part Number: S-VS1000-09-01-AL / S-VS1000-09-02-AL

Part Description: Engine Guard–SUZUKU V-STROM1000

Applicable to Finished colour versions of Silver and Black

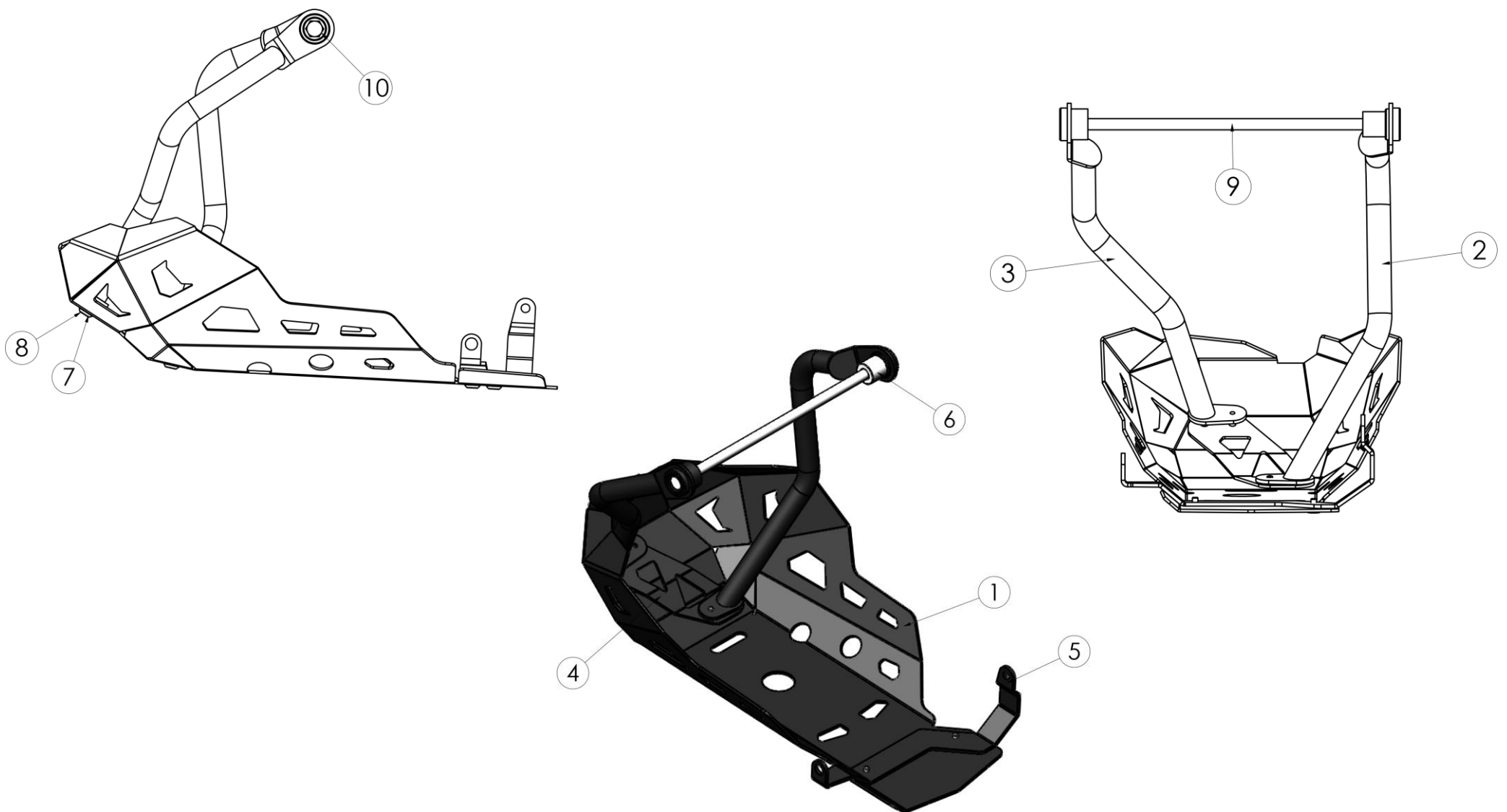
Installation / Parts List / Bill of Material for Mounting

NO.	Description	Quantity	Torque * (N-M)	Remarks **	Check List
1	Engine Guard	1			
2	Bracket RH	1			
3	Bracket LH	1			
4	Bracket Front	1			
5	Bracket Rear	1			
6	Bush Spacer OD14xID27xL24	1			
7	Taper Ring M6	6			
8	Screw M6x15	6	5 - 6	Use Liquid Thread Locker	
9	Hex Bolt M12x340	1	76 - 78	Use Liquid Thread Locker	
10	Nut M12	1			

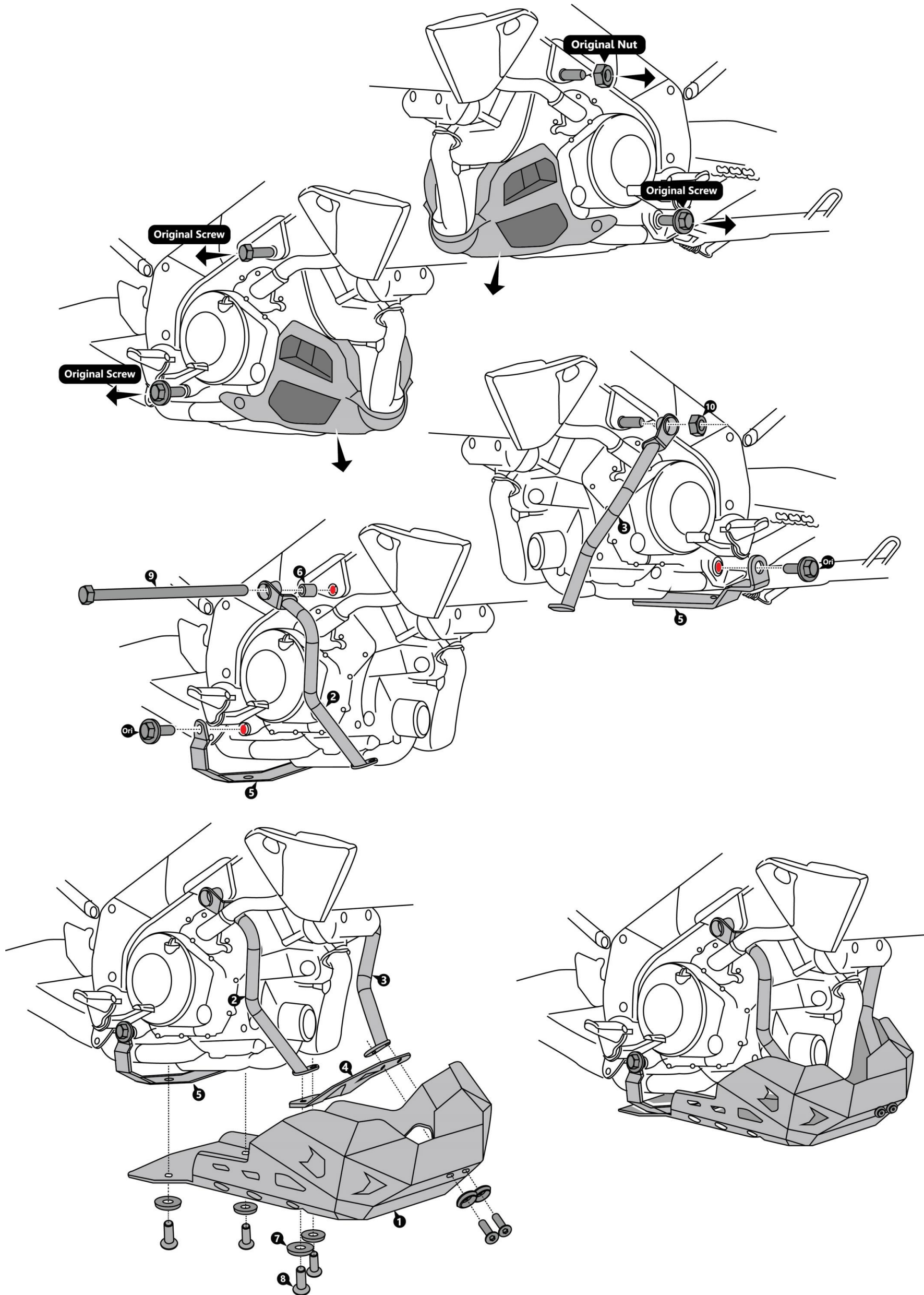
SRC Design uses Metric System of Measurement and all dimensions in Millimeters

* Recommended to use the Torque specified in the table

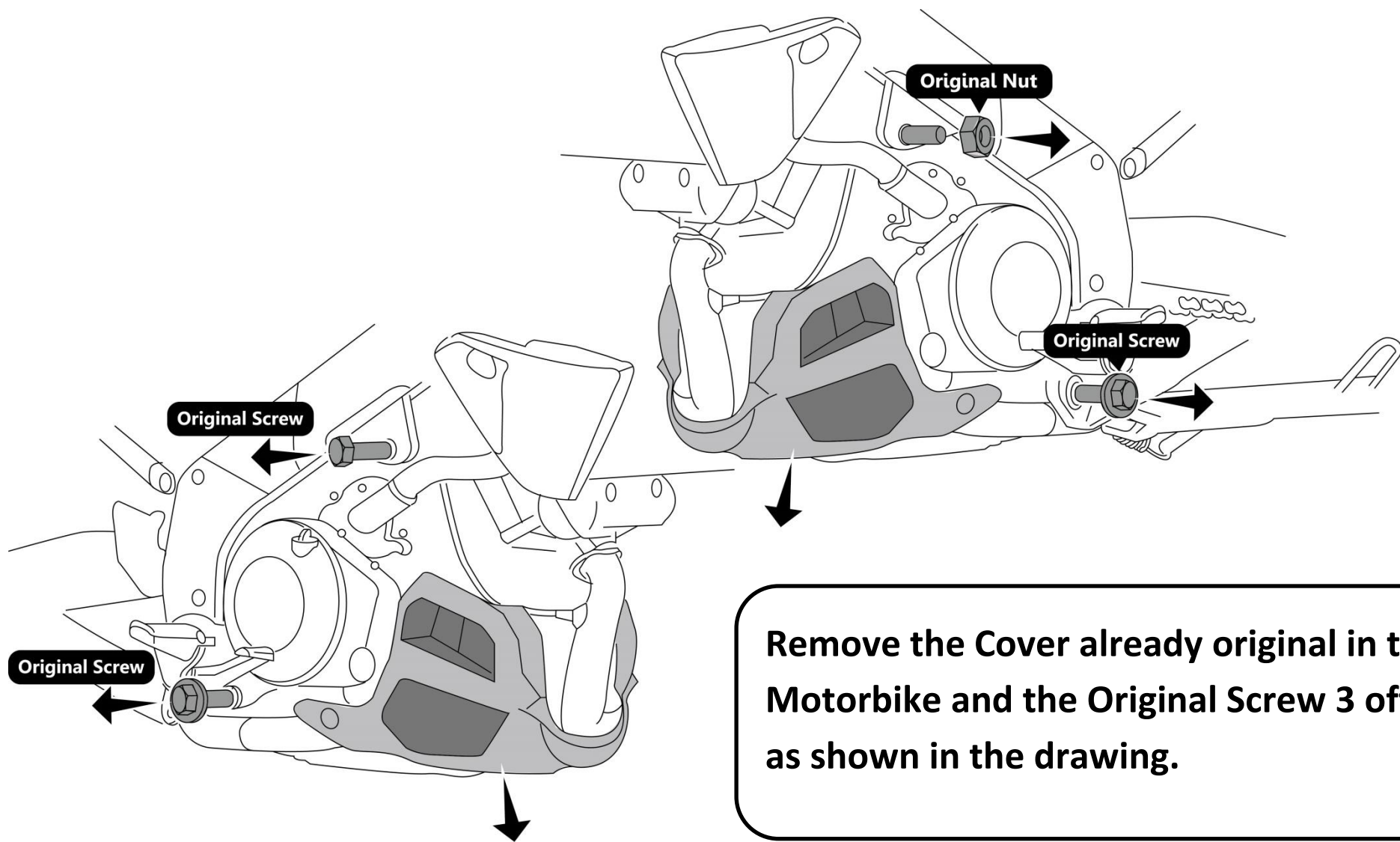
** Denotes Usage of Liquid Thread Locker in specified Locations



MOUNTING DRAWINGS

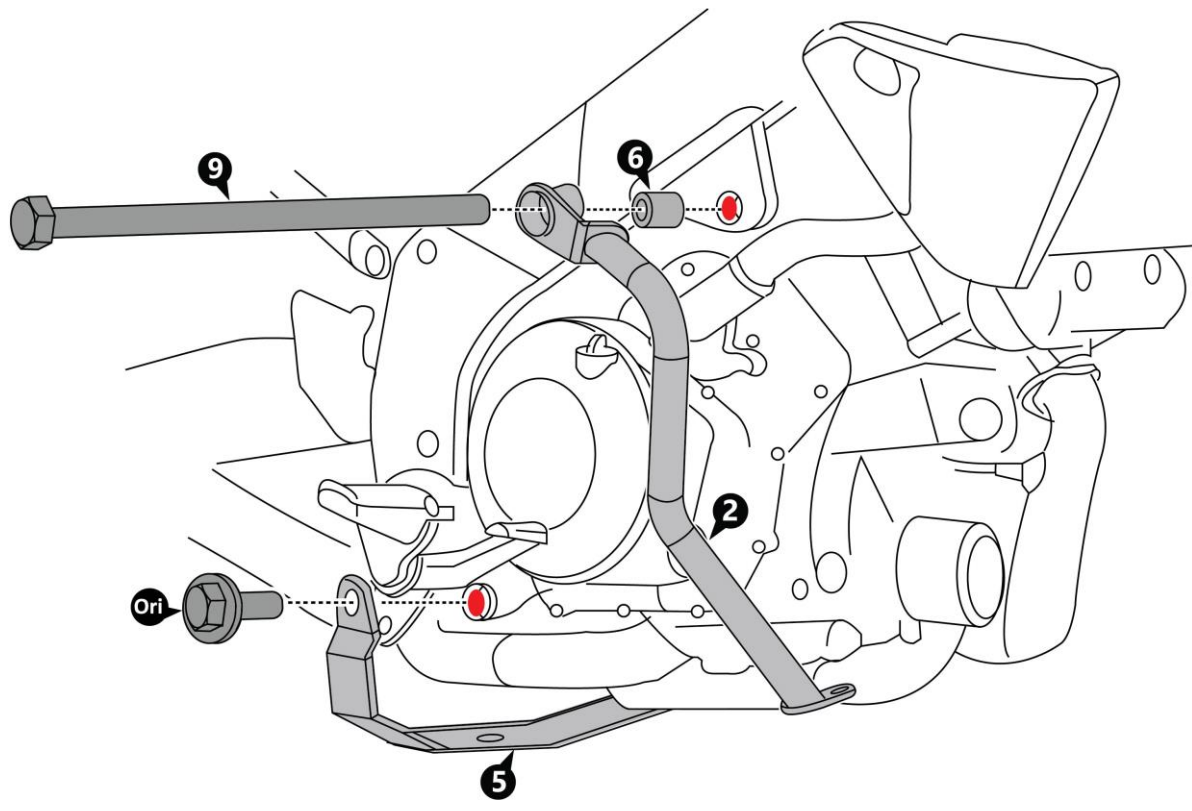


Mounting Instructions



Remove the Cover already original in the Motorbike and the Original Screw 3 off, as shown in the drawing.

Step 1:
Mounting and Assembly of Front Bracket RH (2) and Bracket rear (5)
Orient the Front Bracket RH (2) to the already existing Mounting Holes in the Motorbike (Identified in "Red"). Insert the Bush Spacer (6) the Screws M12x340 (9, in the slot as shown and secure the threads and tighten it to the torque as shown in the table
Orient the Bracket Rear (5) Insert the Original Screw and secure the threads and tighten it to the torque as shown in the table.

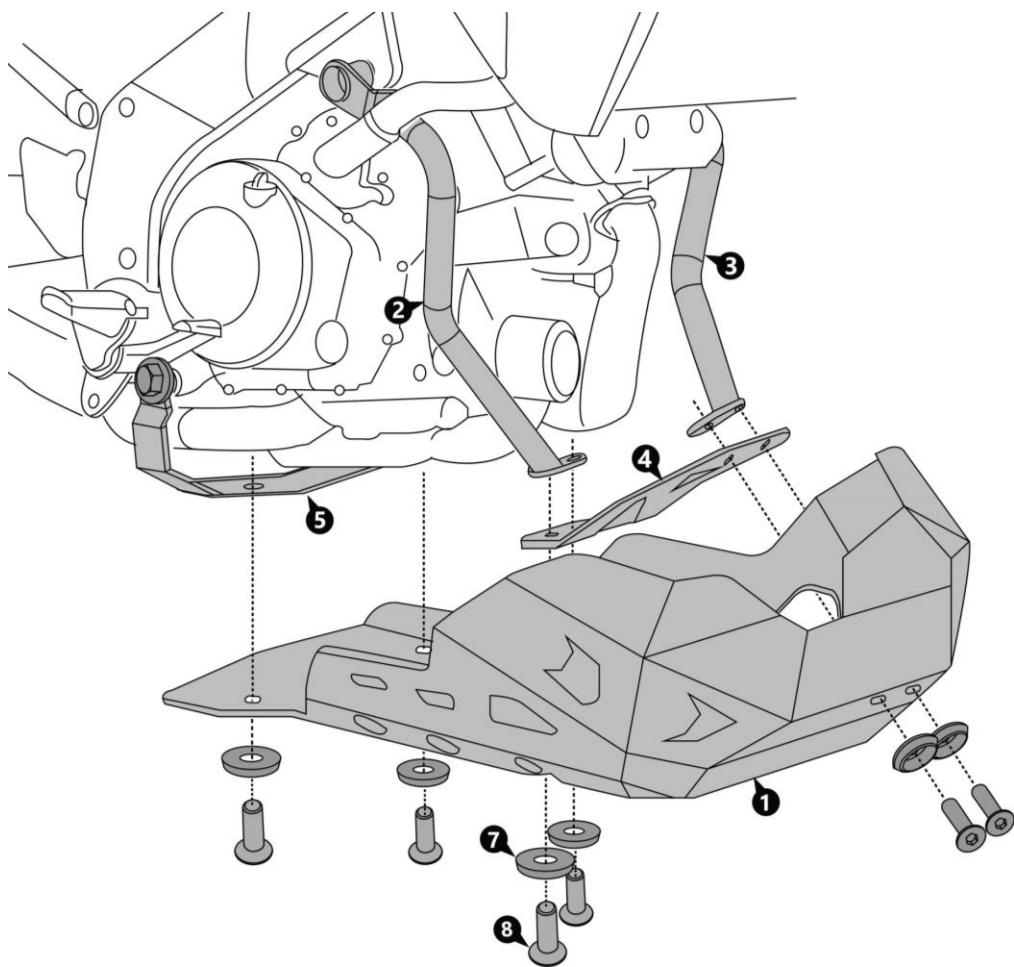
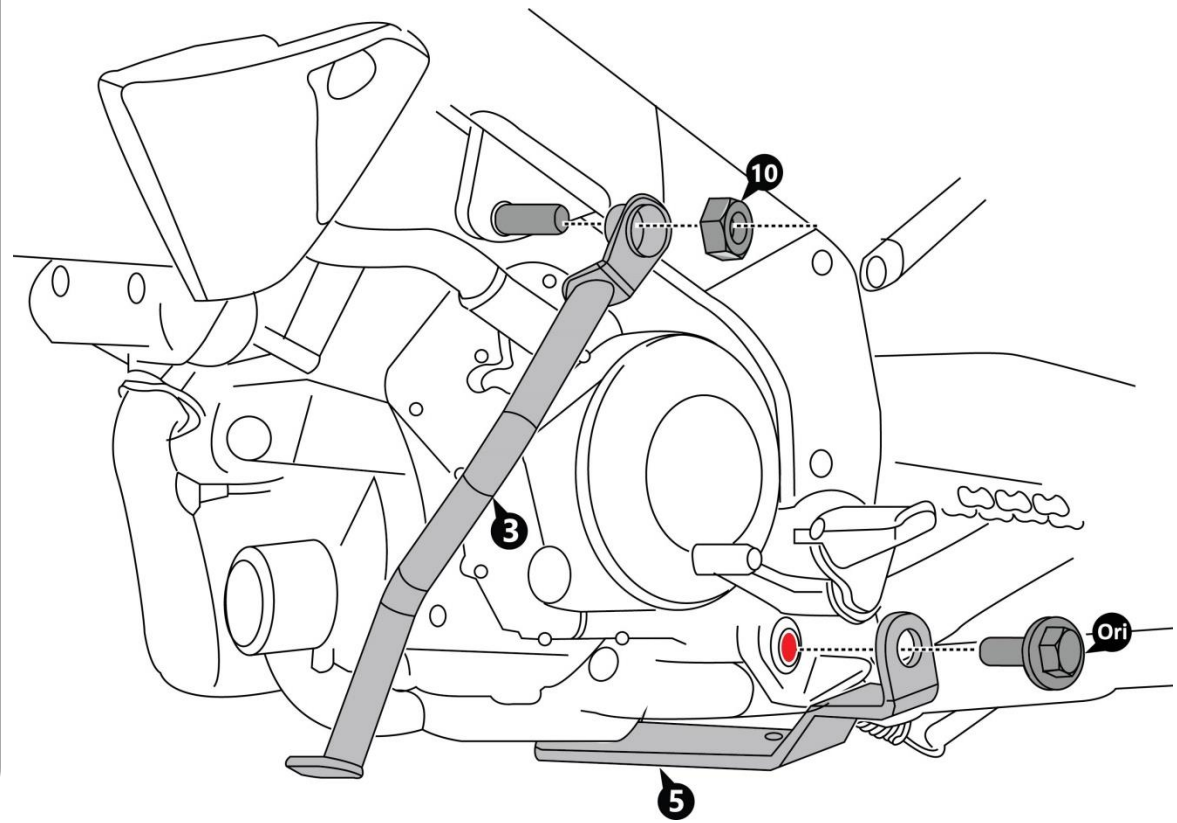


Step 2:

Mounting and Assembly of Front Bracket LH (3)

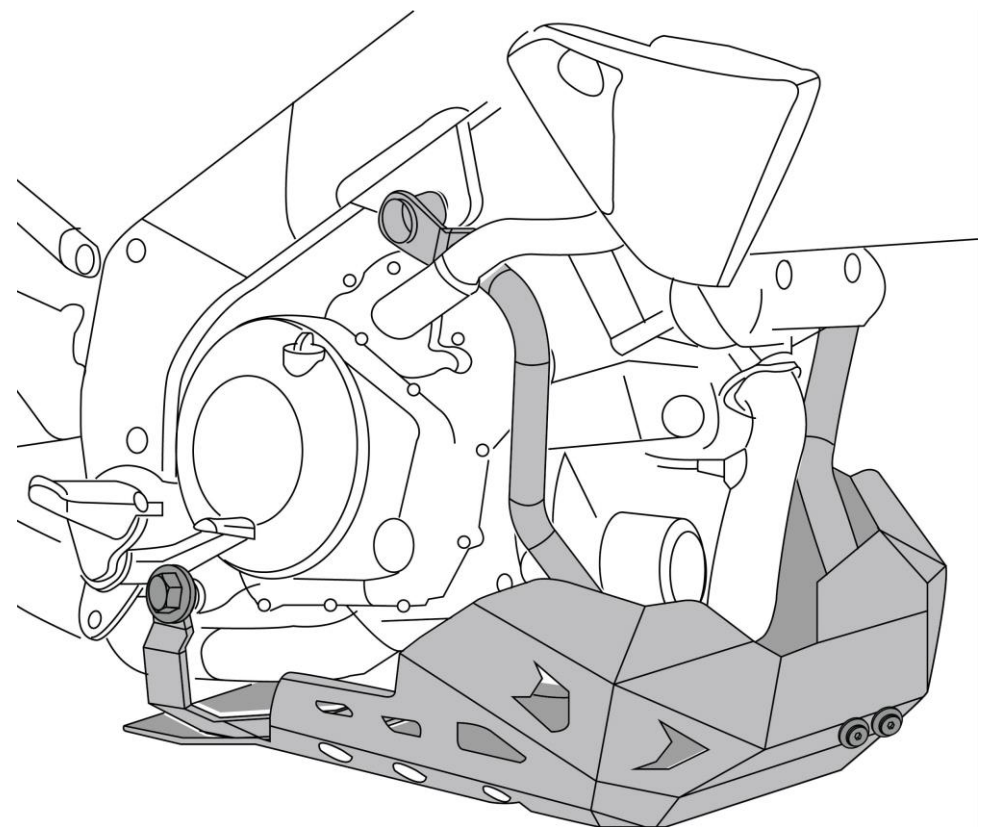
Orient the Bracket LH (3) and Insert the end long Screw (9, from the LH Side, through the hole as shown and secure it using Flange Nut M12 (10)

And Insert the Original Screw to the Bracket Rear (5) and secure the threads and tighten it to the torque as shown in the table.



Step 3:

Orient the Bracket Front (4) and the Engine Guard (1) the Taper Ring M6 (7) and Insert the Screw M6x15 (8) from under Side, and secure the threads and tighten it to the torque as shown in the table.



Engine Guard as shown in “Final as Is Mounted Condition”



General Instructions

1. We request you to pay attention to the Mounting Instructions in this document and follow the step-by-step procedures.
2. This Mounting Instruction manual is a “Do It Yourself” (DIY) fitment manual of the Accessory part to the Vehicle. We have prepared this based on our experience and knowledge, related to the Vehicle, Part and its functional aspects.
3. SRC cannot guarantee the interchangeability of the parts to any other manufacturer’s accessory part. It is advised to the User, to inspect and ensure the original state of all other Vehicle parts.
4. We request you to bear in mind, that the Installed part can change the driving behaviour and/or the stability during driving or any other dynamic conditions.
5. If you have the appropriate tools and another person to assist you in the mounting, it will help.
6. After Completion of the Mounting and before taking on a First ride, Ensure and Check all functions of the Vehicle. It is always advised to check loosening of the fasteners after the first 50 kilo meters of ride and at regular intervals.
7. To the maximum extent possible, our design use the current Mounting/Fitment of the Original Equipment, so that Installation of these accessories will not affect the Payload or Function of the Vehicle or the Part on which it is mounted to protect it
8. If any additional modifications are to be done, prior to the fitment of the accessories, it will be explicitly specified in the instruction sheets