

Scope of Supply/Bill of Material & Mounting Drawings

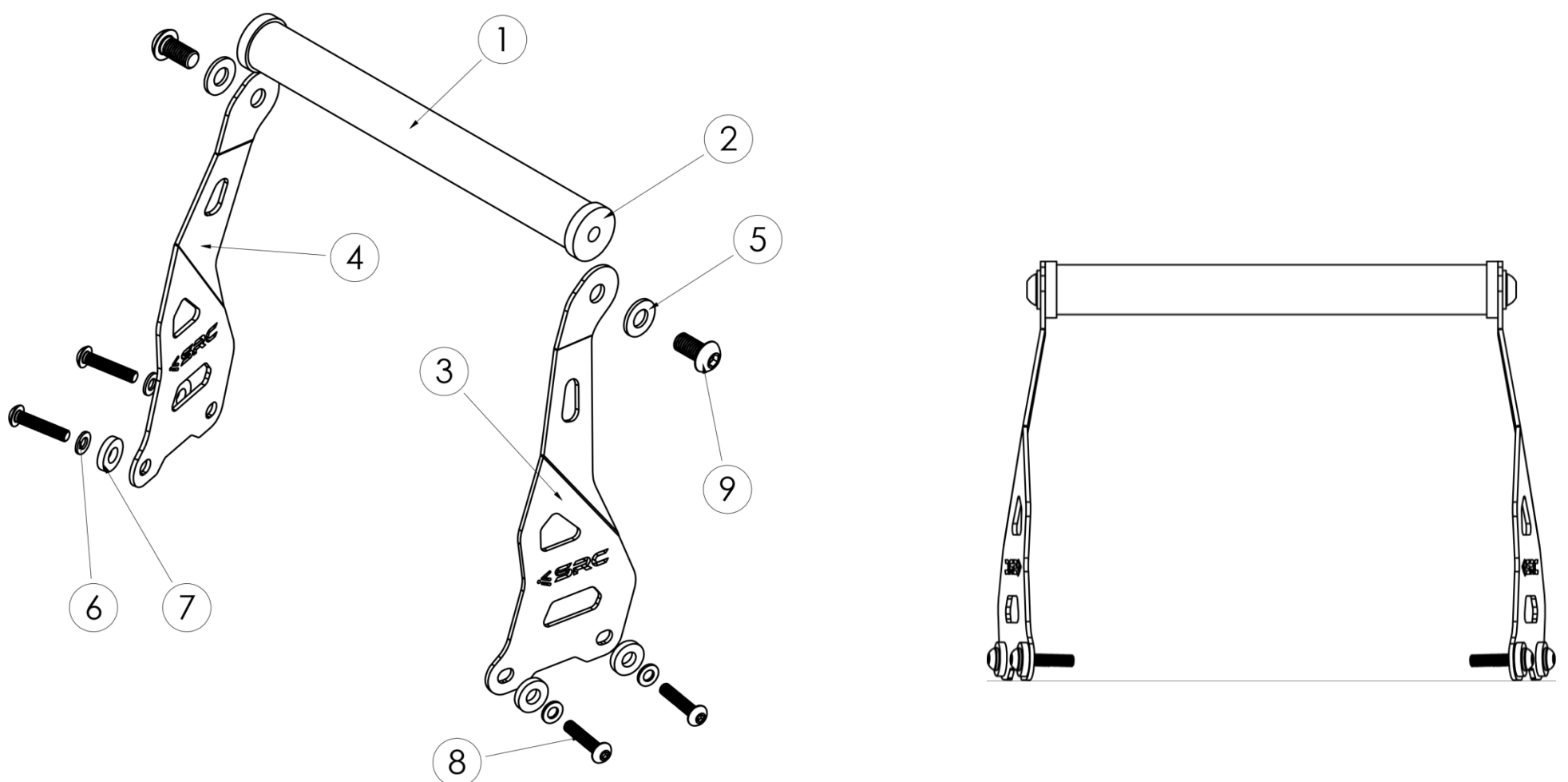
Part Number: **R-HM18-07-01-SL / R-HM18-07-02**

Part Description: GPS Bar – Royal Enfield - Himalayan

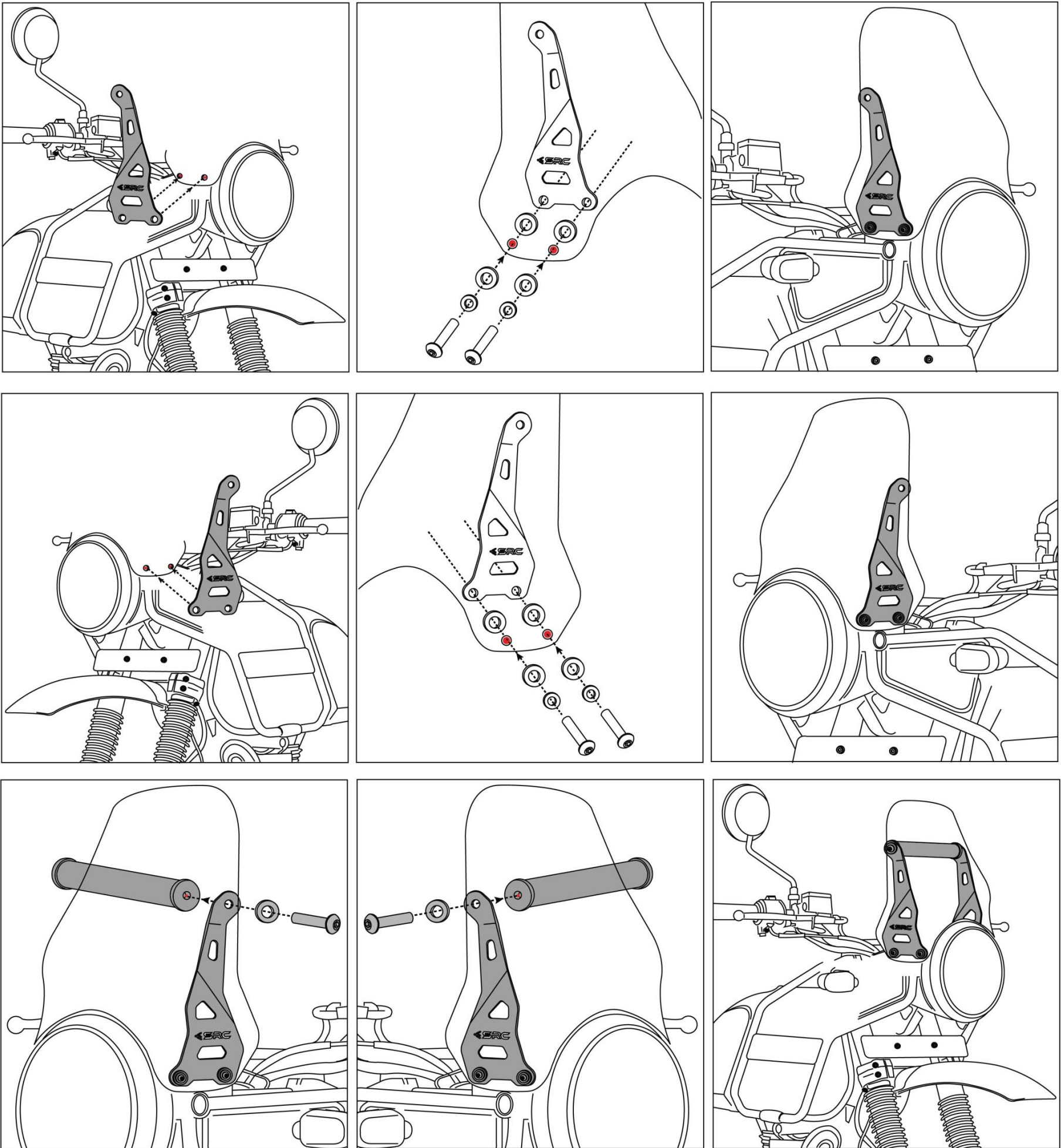
Applicable to Stainless Steel & Steel Version

Installation / Parts List / Bill of Material for Mounting

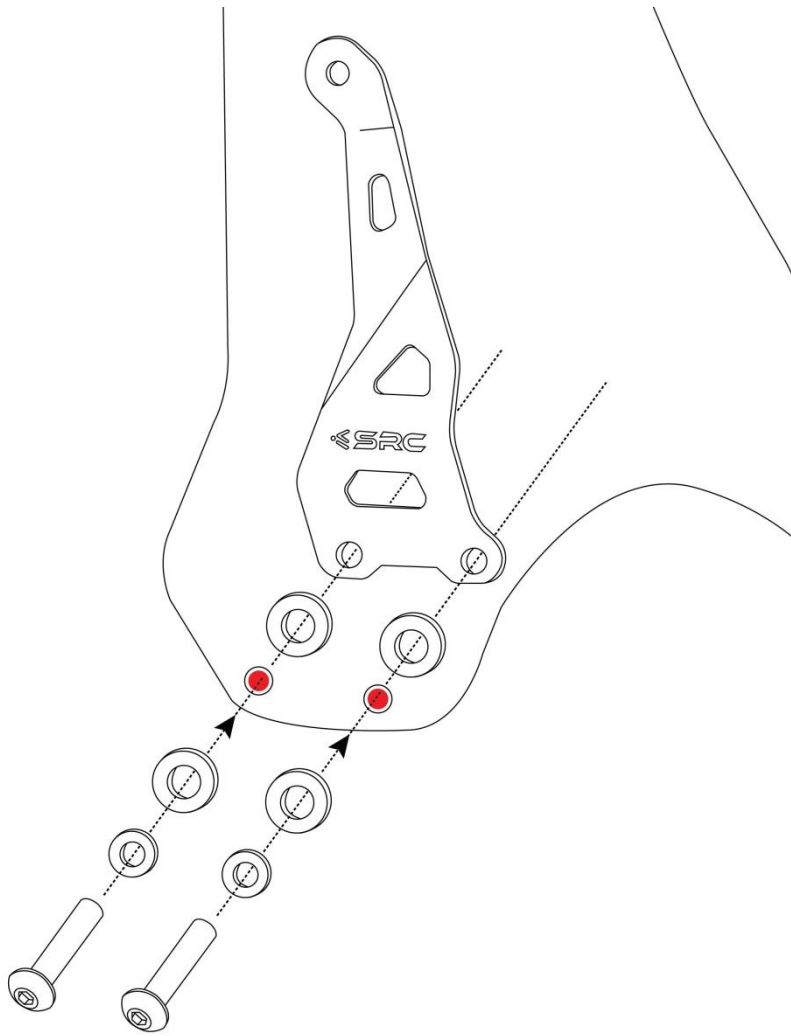
NO.	Description	Quantity	Torque * (N-M)	Remarks **
1	GPS Bar	1		
2	End Adaptor	2		
3	Bracket-LH	1		
4	Bracket-RH	1		
5	Washer for M8 Screw	2		
6	Washer for M5 Screw	4		
7	Delrin	4		
8	Cap Screw M5	4	5 - 6	Use Liquid Thread Locker
9	Cap Screw M8	2	9 - 10	Use Liquid Thread Locker
SRC Design uses Metric System of Measurement and all dimensions in Millimeters				
* Recommended to use the Torque specified in the table				
** Denotes Usage of Liquid Thread Locker in specified Locations				



MOUNTING DRAWINGS

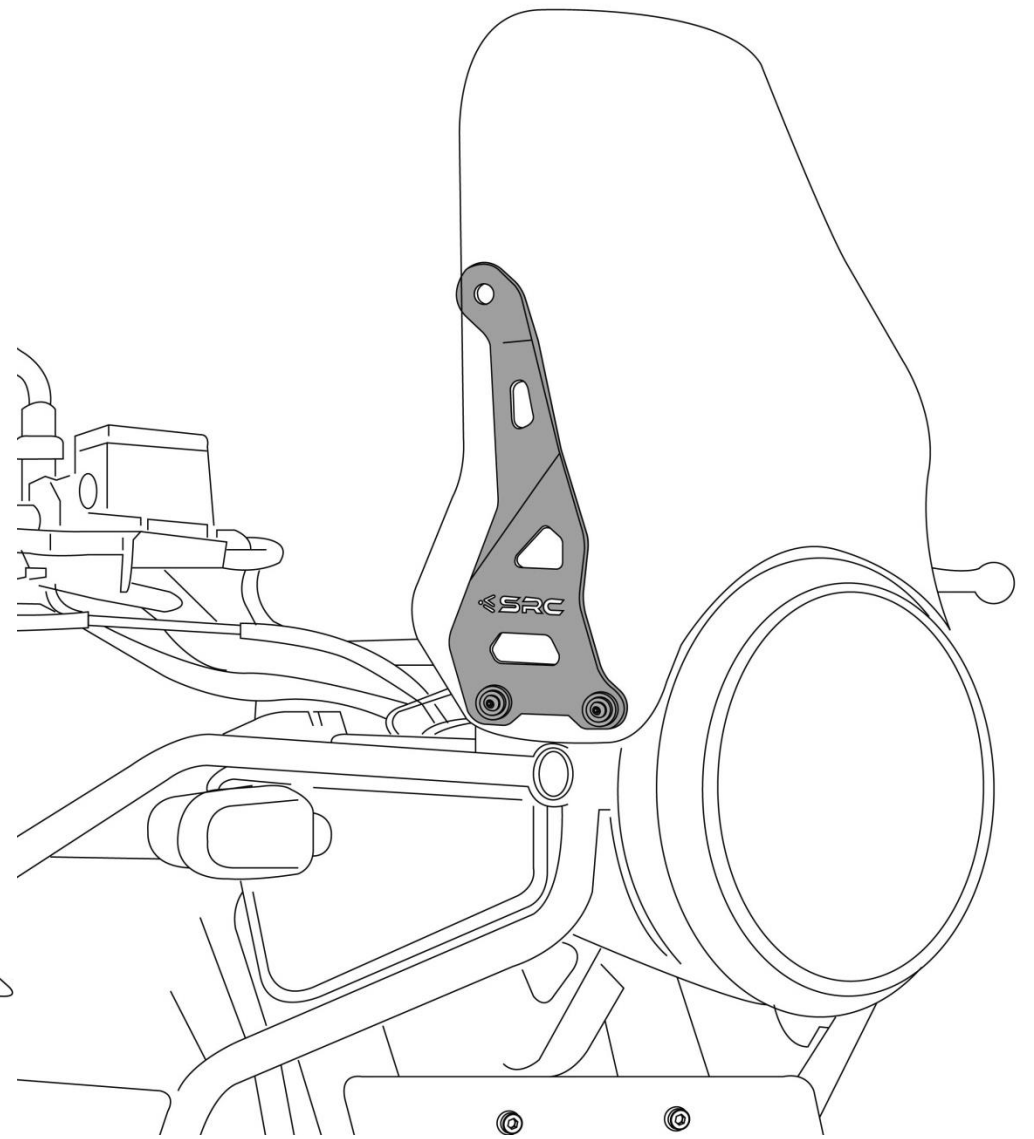
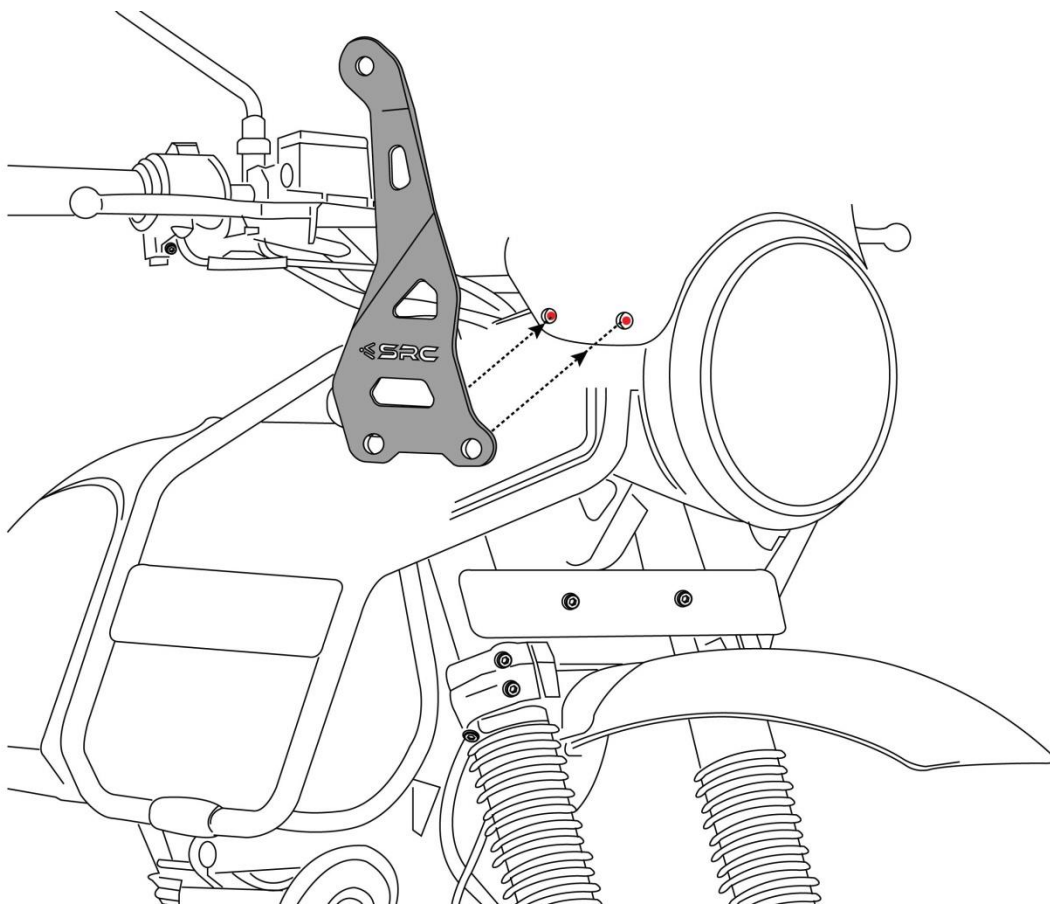


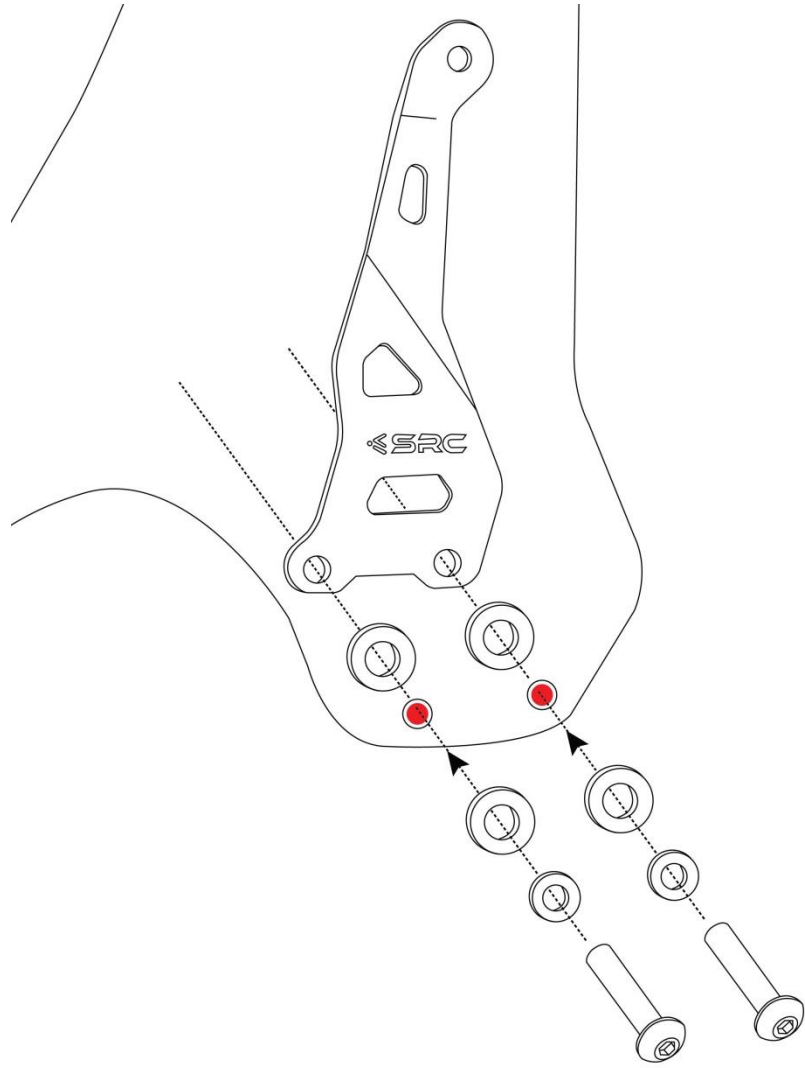
Mounting Installation



Step 1:

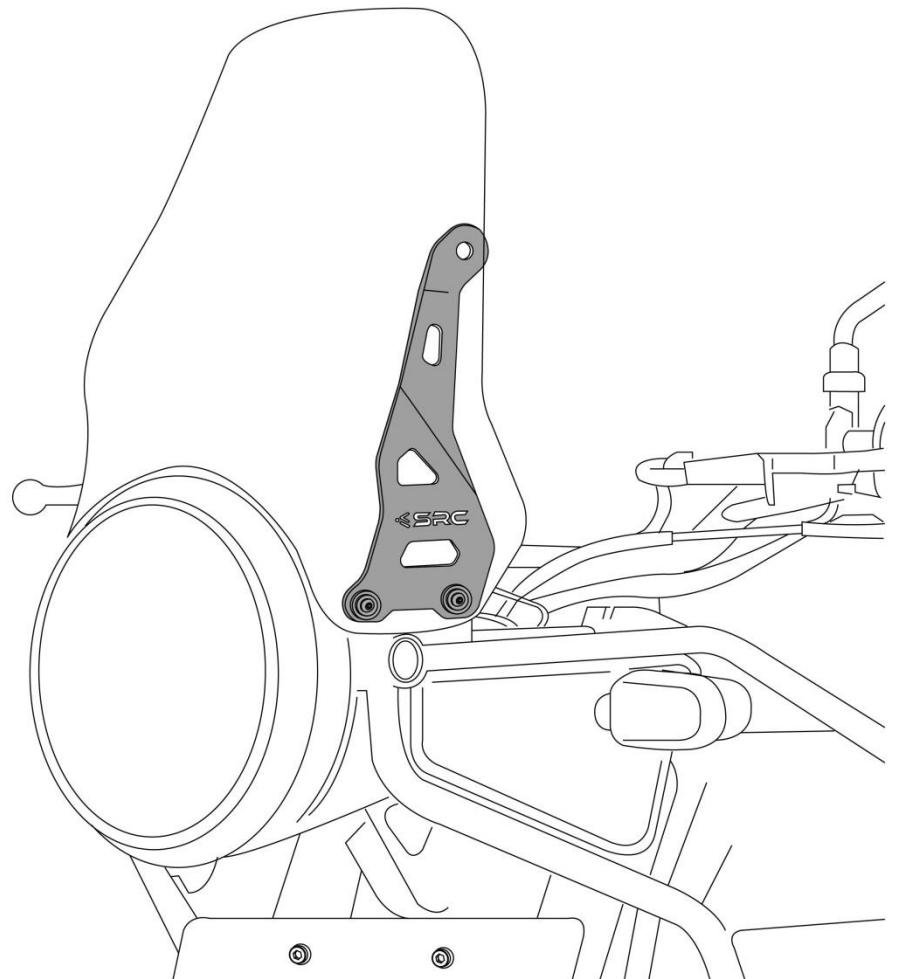
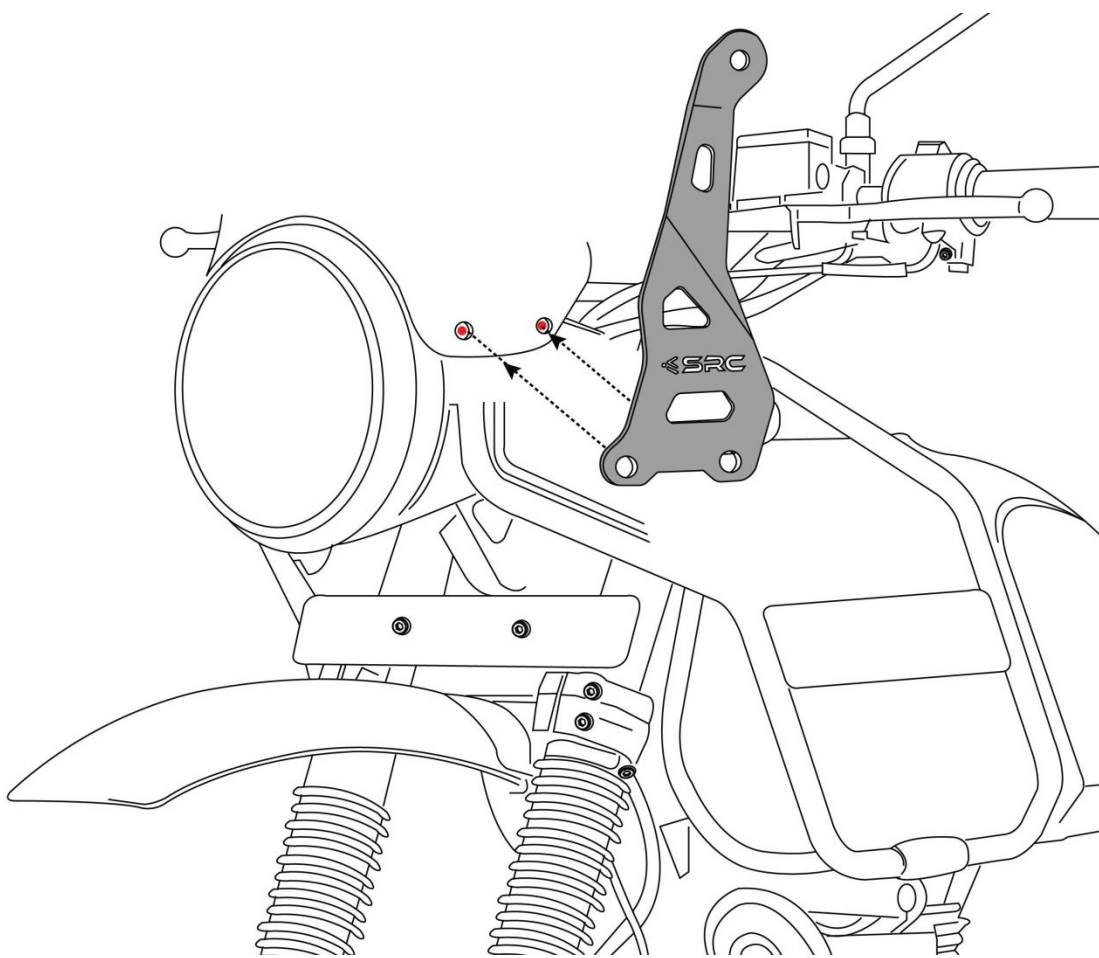
Align the Bracket RH (4), as shown in the drawing to the Mounting Holes (Shown in "Red") and slide in the Delrin Bush, Screw and Washer and tighten it

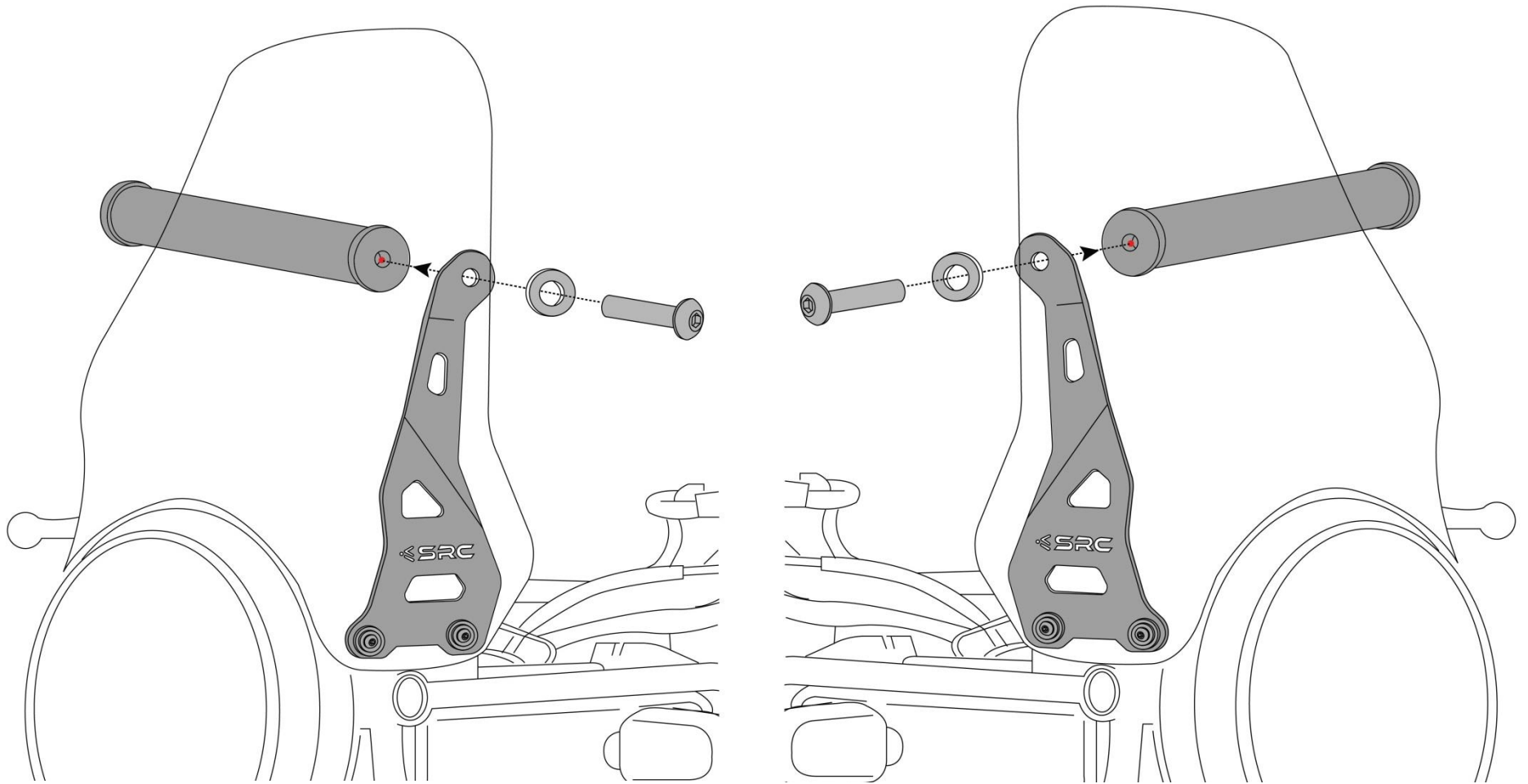




Step 2:

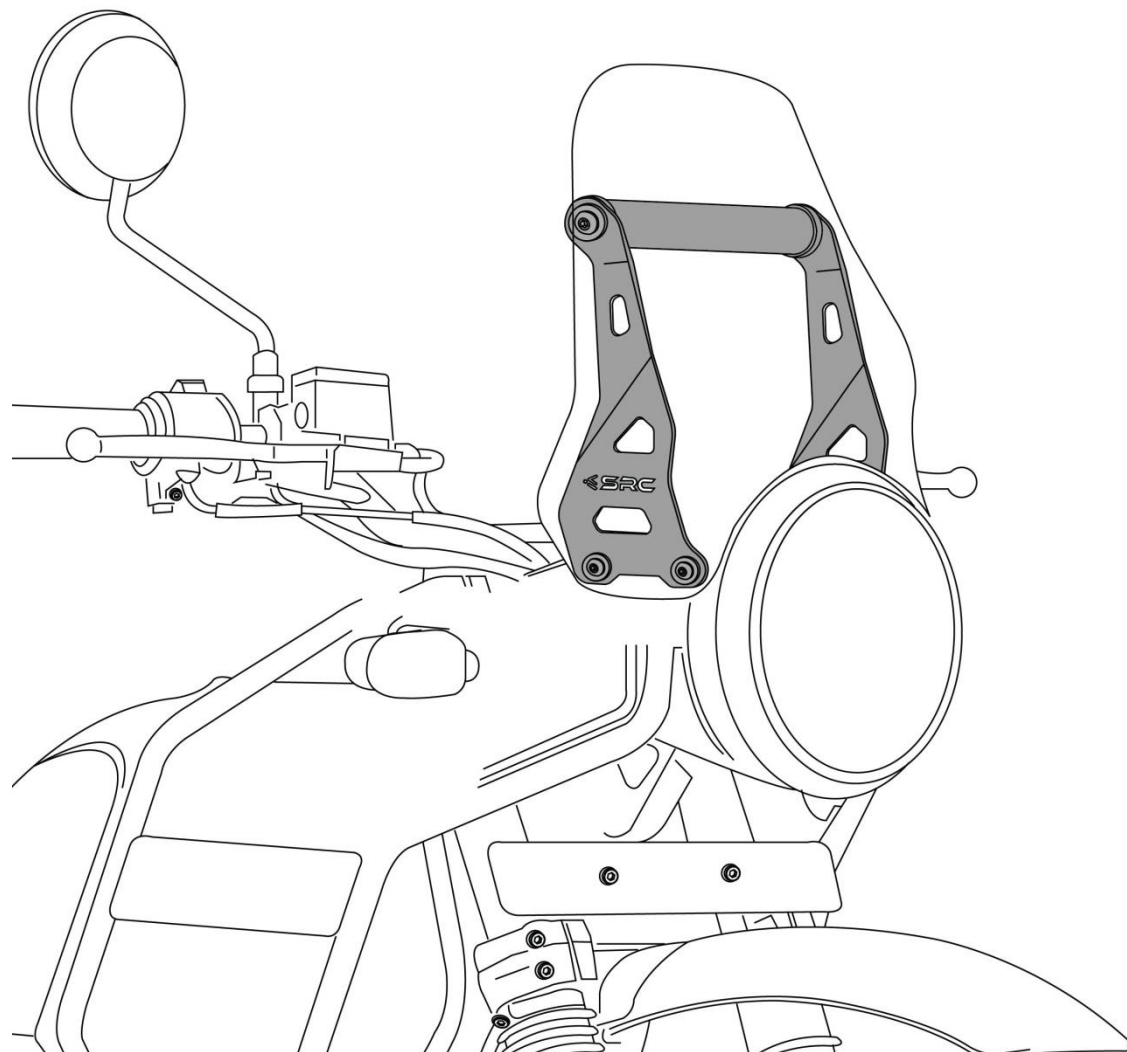
Align the Bracket LH (3), as shown in the drawing to the Mounting Holes (Shown in "Red") and slide in the Delrin Bush, Screw and Washer and tighten it





Step 3:

The GPS Bar (By Design) has M8 Threaded holes on both Ends. Align the GPS Bar (1), in between the Brackets (3) and (4) and use Washer M8 (5) and Screw M8 (9) and tighten it fully



GPS Bar in “Final Mounted Condition” as shown in the Drawing



General Instructions

1. We request you to pay attention to the Mounting Instructions in this document and follow the step-by-step procedures.
2. This Mounting Instruction manual is a “Do It Yourself” (DIY) fitment manual of the Accessory part to the Vehicle. We have prepared this based on our experience and knowledge, related to the Vehicle, Part and its functional aspects.
3. SRC cannot guarantee the interchangeability of the parts to any other manufacturer’s accessory part. It is advised to the User, to inspect and ensure the original state of all other Vehicle parts.
4. We request you to bear in mind, that the Installed part can change the driving behaviour and/or the stability during driving or any other dynamic conditions.
5. If you have the appropriate tools and another person to assist you in the mounting, it will help.
6. After Completion of the Mounting and before taking on a First ride, Ensure and Check all functions of the Vehicle. It is always advised to check loosening of the fasteners after the first 50 kilo meters of ride and at regular intervals.
7. To the maximum extent possible, our design use the current Mounting/Fitment of the Original Equipment, so that Installation of these accessories will not affect the Payload or Function of the Vehicle or the Part on which it is mounted to protect it
8. If any additional modifications are to be done, prior to the fitment of the accessories, it will be explicitly specified in the instruction sheets