

Scope of Supply/Bill of Material & Mounting Drawings

Part Number: K-VS18-17-01-SL / K-VS18-17-02
 Part Description: Crash Bar – KAWASAKI VERSYS650 2015 - 2019
 Applicable to both Stainless Steel and Steel Versions

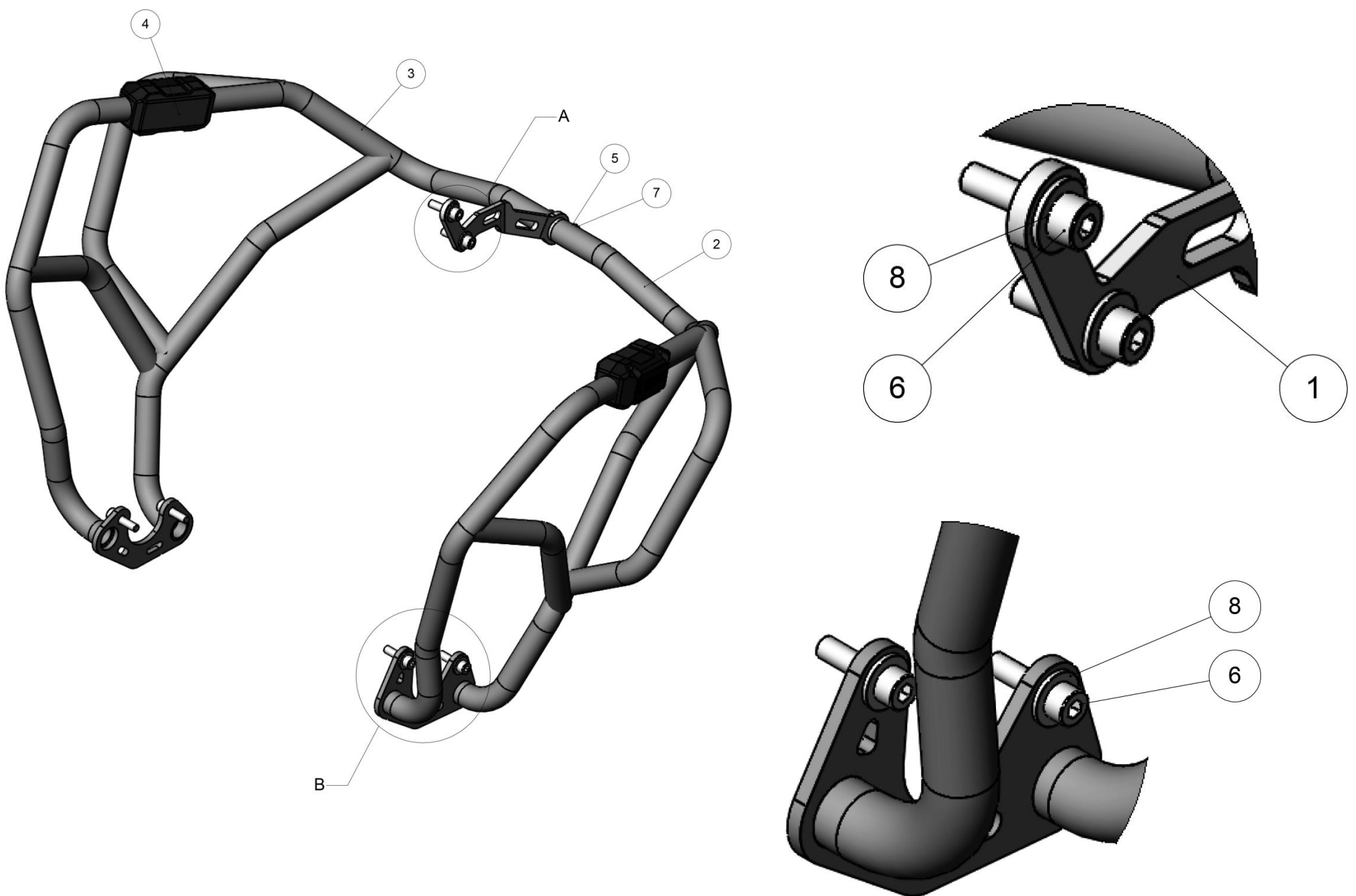
Installation / Parts List / Bill of Material for Mounting

No.	Description	Quantity	Torque * (N-m)	Remarks **
1	Bracket Upper	1		
2	Crash Bar - RH	1		
3	Crash Bar - LH	1		
4	Slider Guard	2		
5	Screw M6 x 15	2	10-12	Use Liquid Thread Locker
6	Screw M8 x 30	6	25-30	Use Liquid Thread Locker
7	Washer M6	2		
8	Washer M8	6		

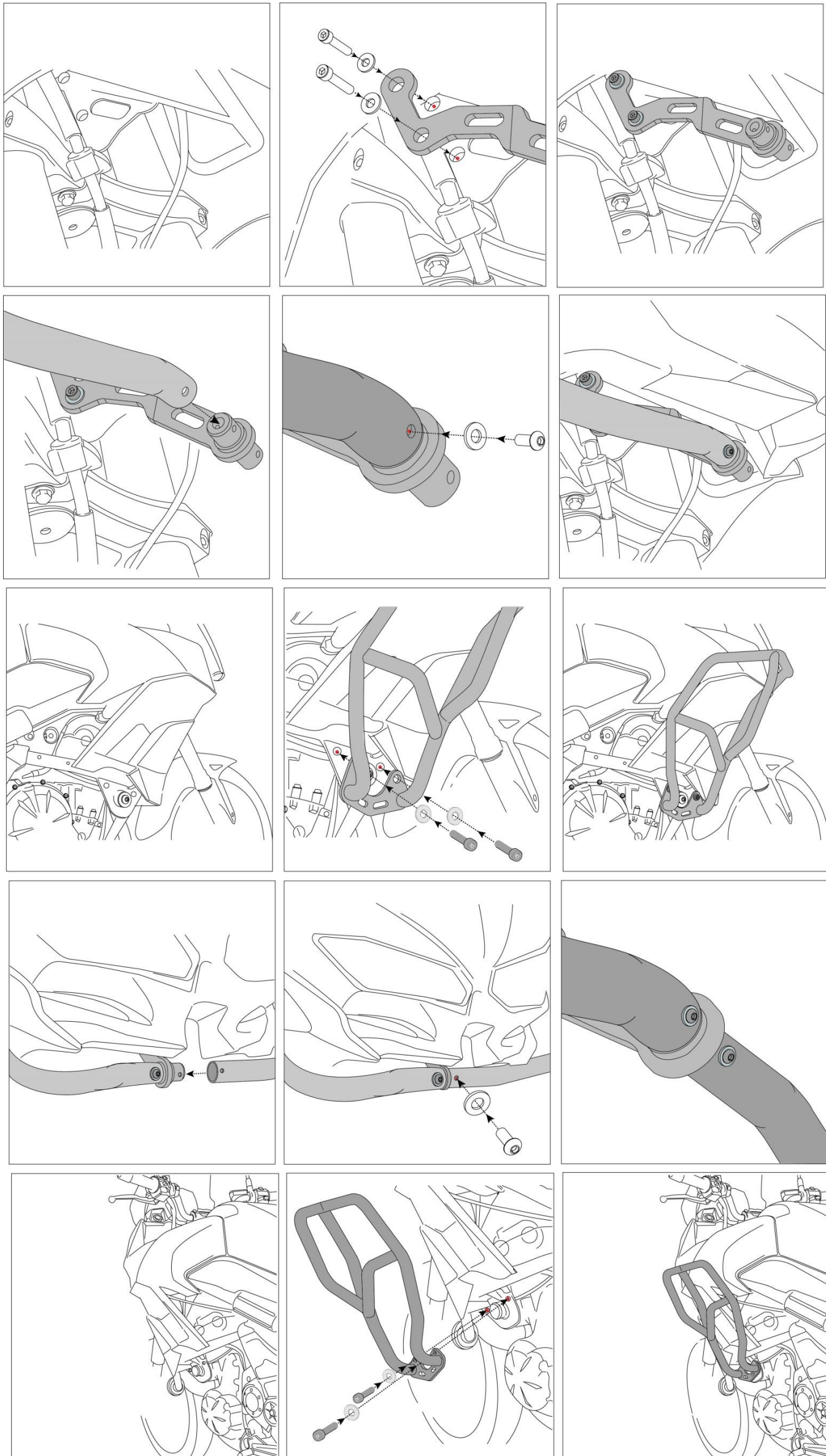
SRC Design uses Metric System of Measurement and all dimensions are in Millimeters

* Recommended to use the Torque specified in the table

** Denotes Usage of Liquid Thread Locker in specified locations



Mounting Drawings



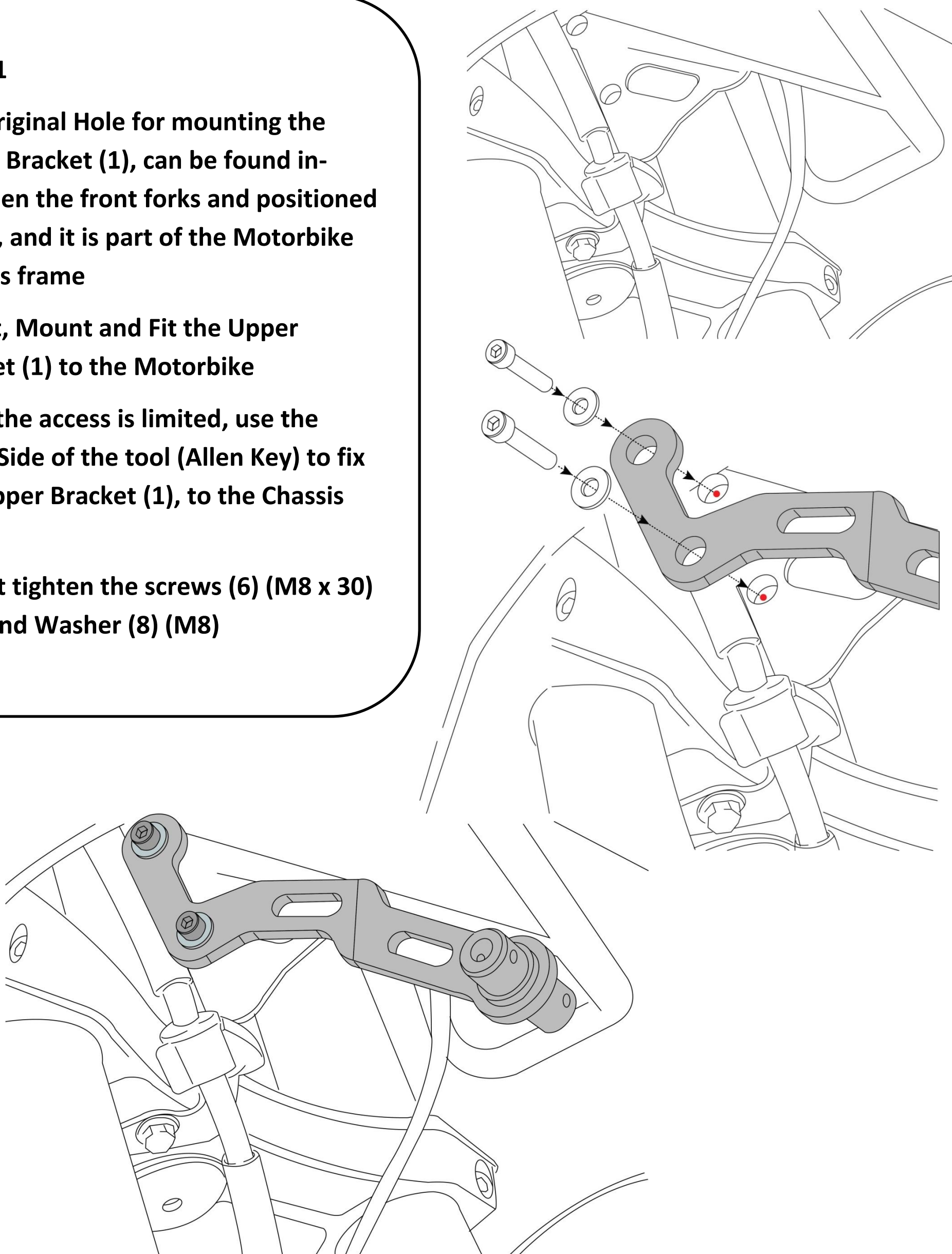
Mounting Instructions**Step: 1**

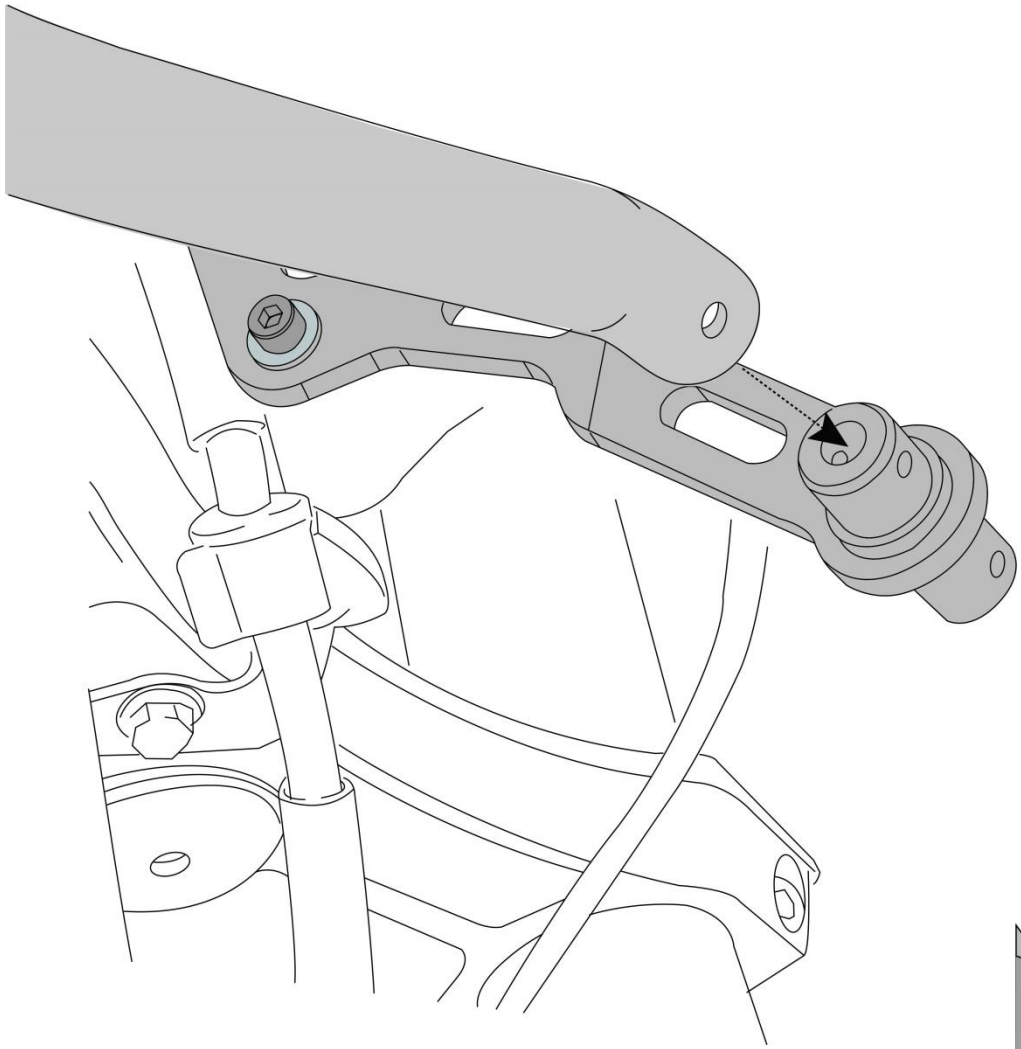
The Original Hole for mounting the Upper Bracket (1), can be found in-between the front forks and positioned inside, and it is part of the Motorbike Chassis frame

Orient, Mount and Fit the Upper Bracket (1) to the Motorbike

Since the access is limited, use the Short Side of the tool (Allen Key) to fix the Upper Bracket (1), to the Chassis frame

Do not tighten the screws (6) (M8 x 30) fully and Washer (8) (M8)



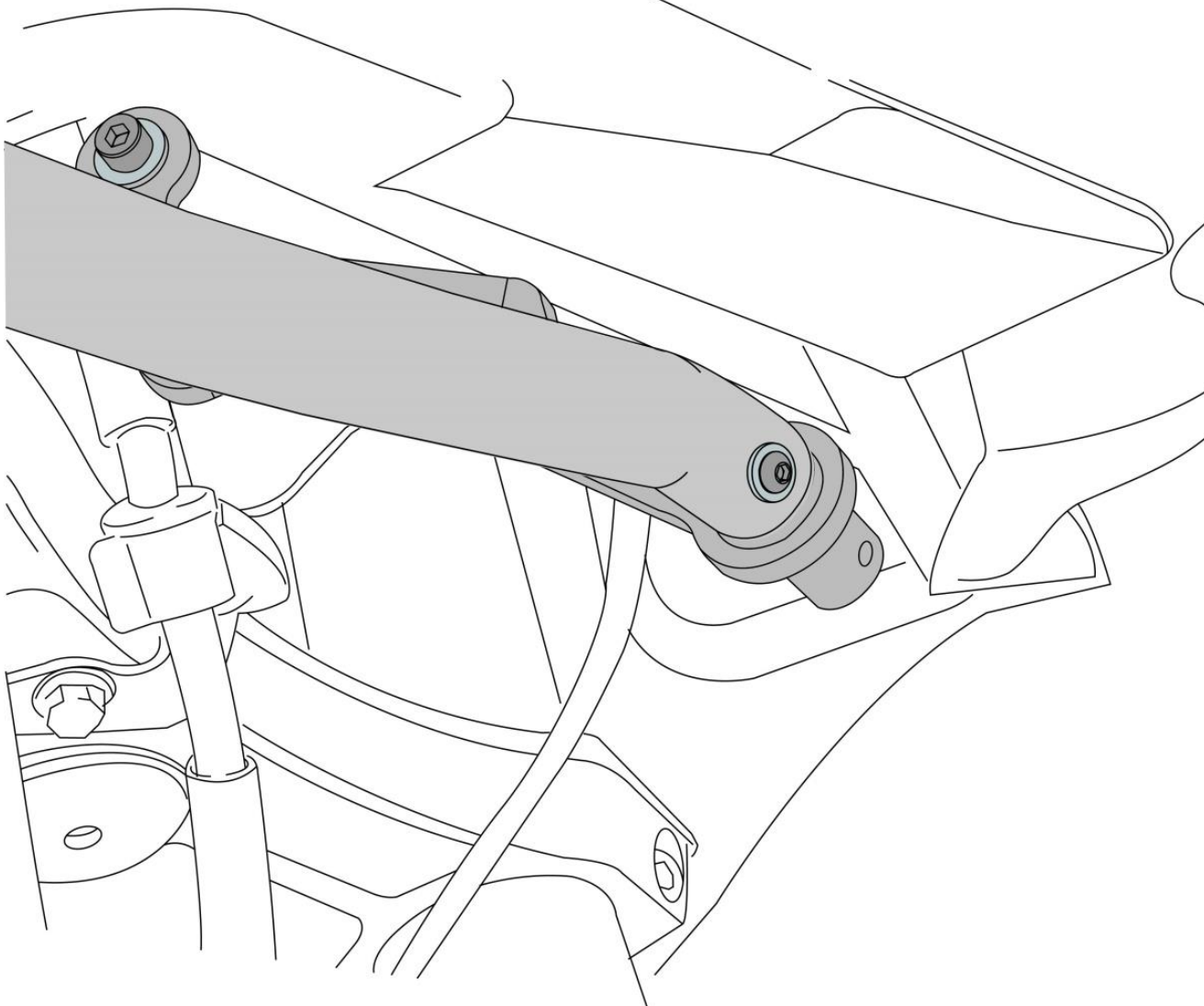
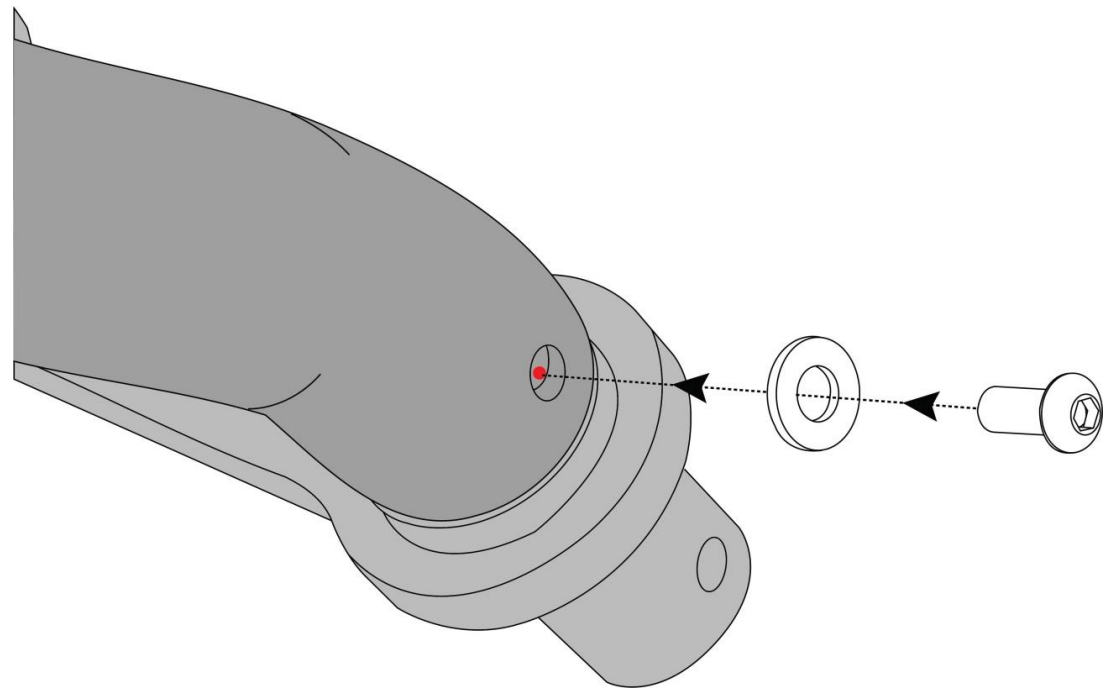


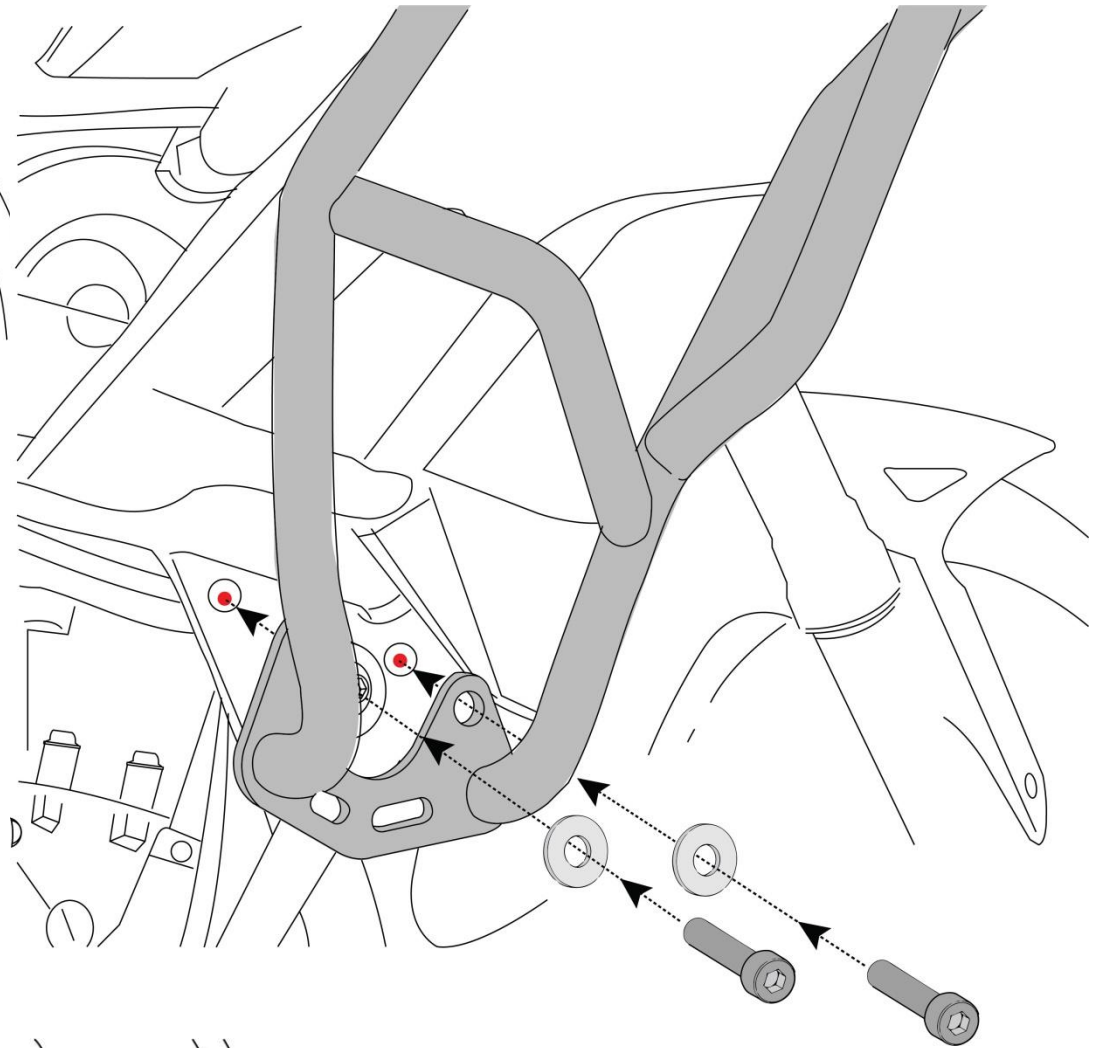
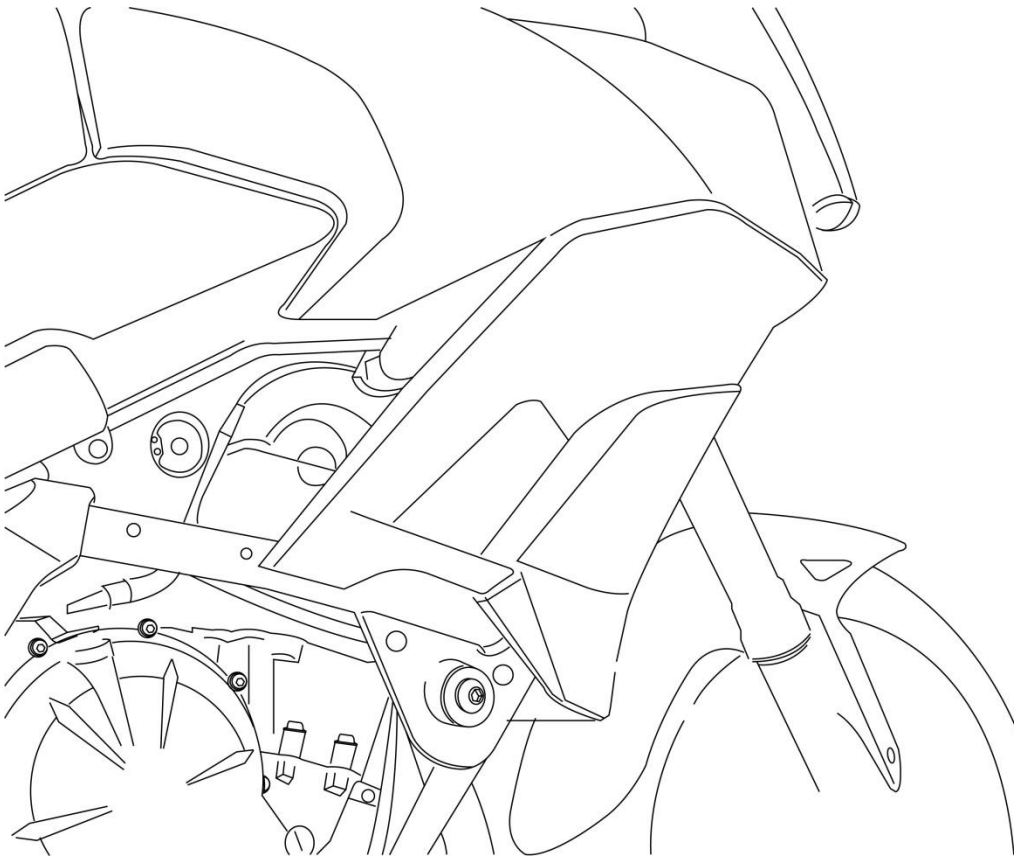
Step: 2

Orient the Crash bar LH (3) and mount it to the Upper Bracket

The Upper Bracket has a Cylindrical Pin block (as shown)

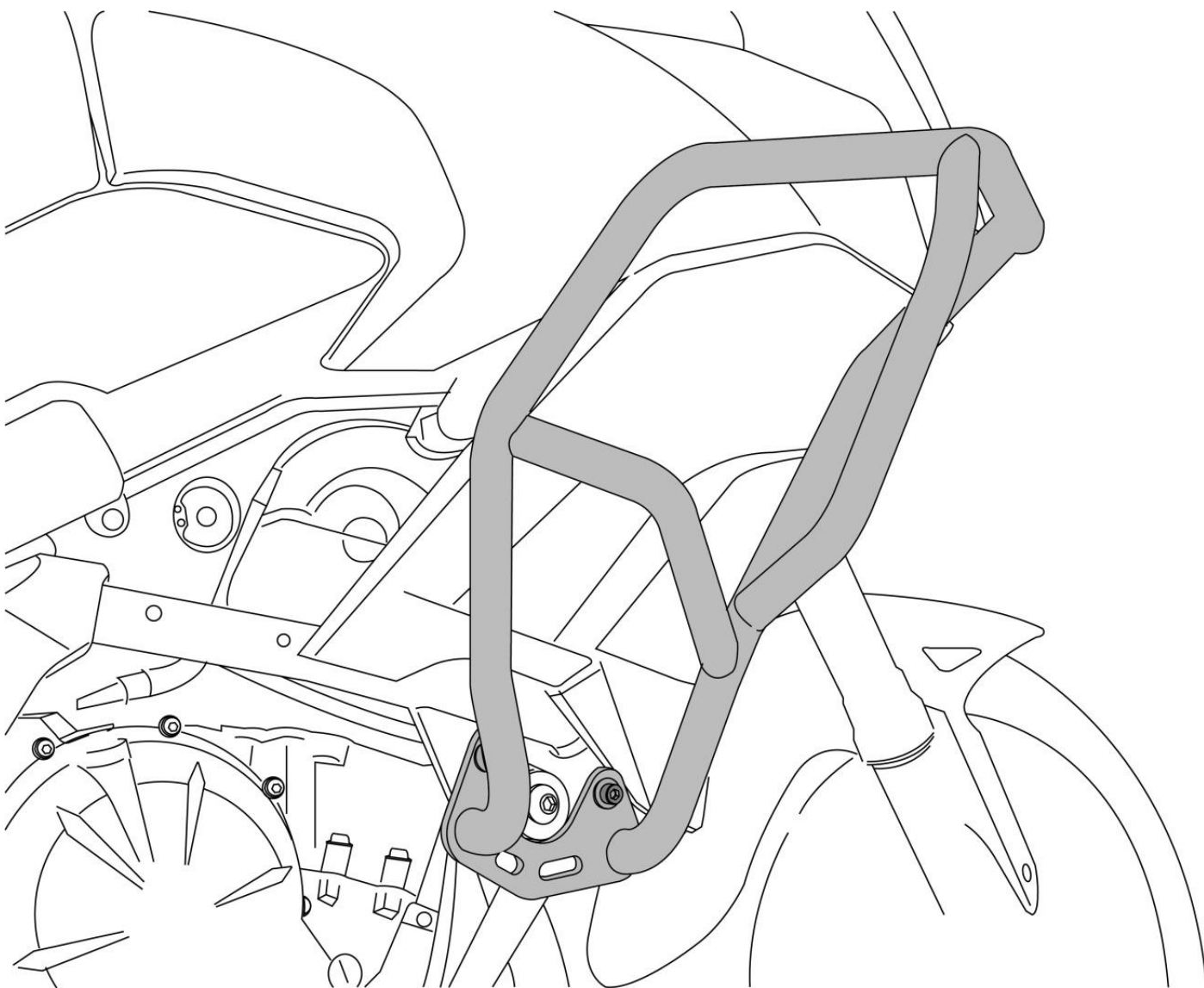
Insert the screws (5) M6 x 15 and Washer (7) M6, but do not tighten it fully

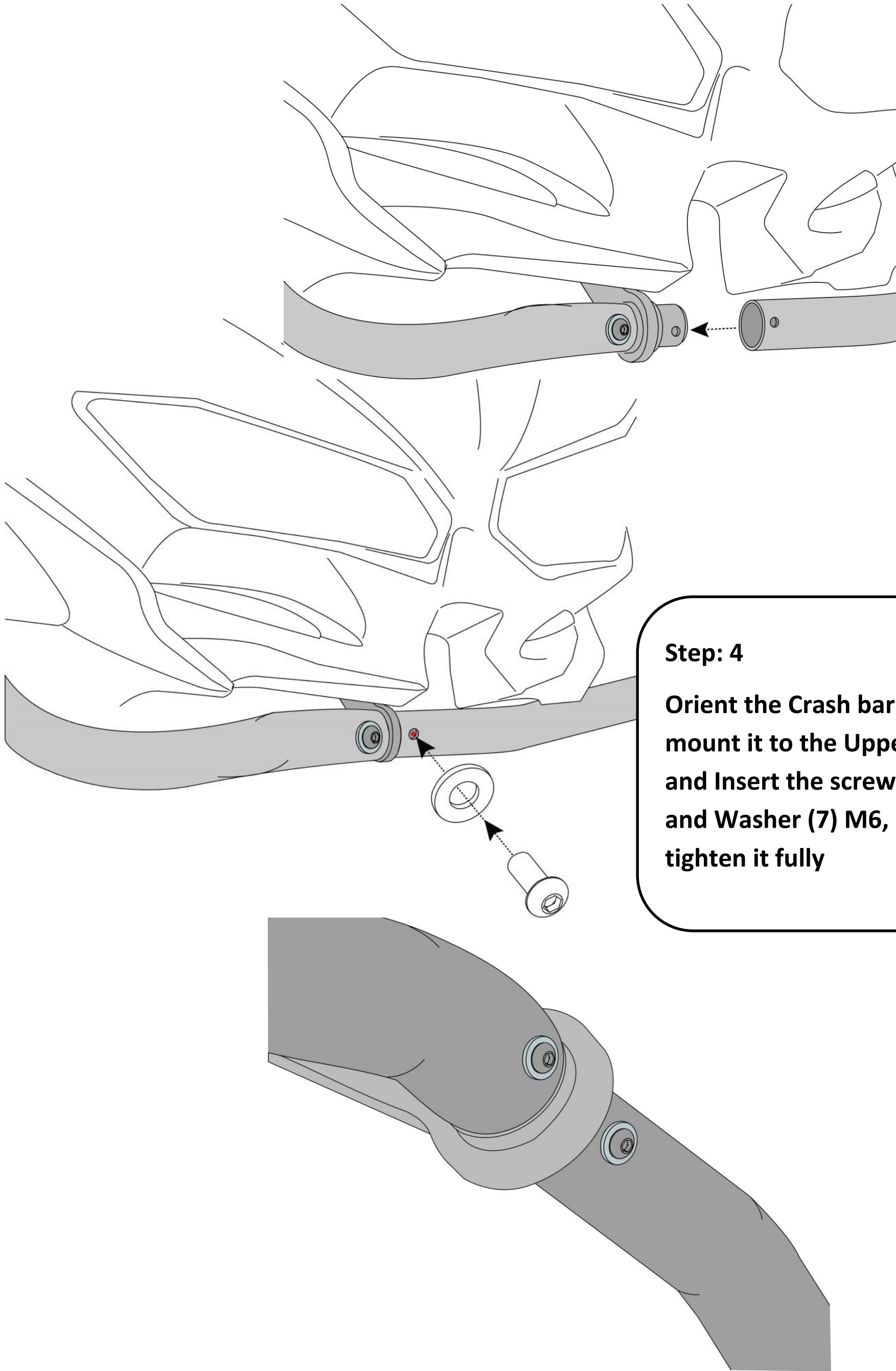




Step: 3

Repeat the Step – 4, in this stage to mount the Crash Bar of the opposite hand to the Vehicle mounting as shown





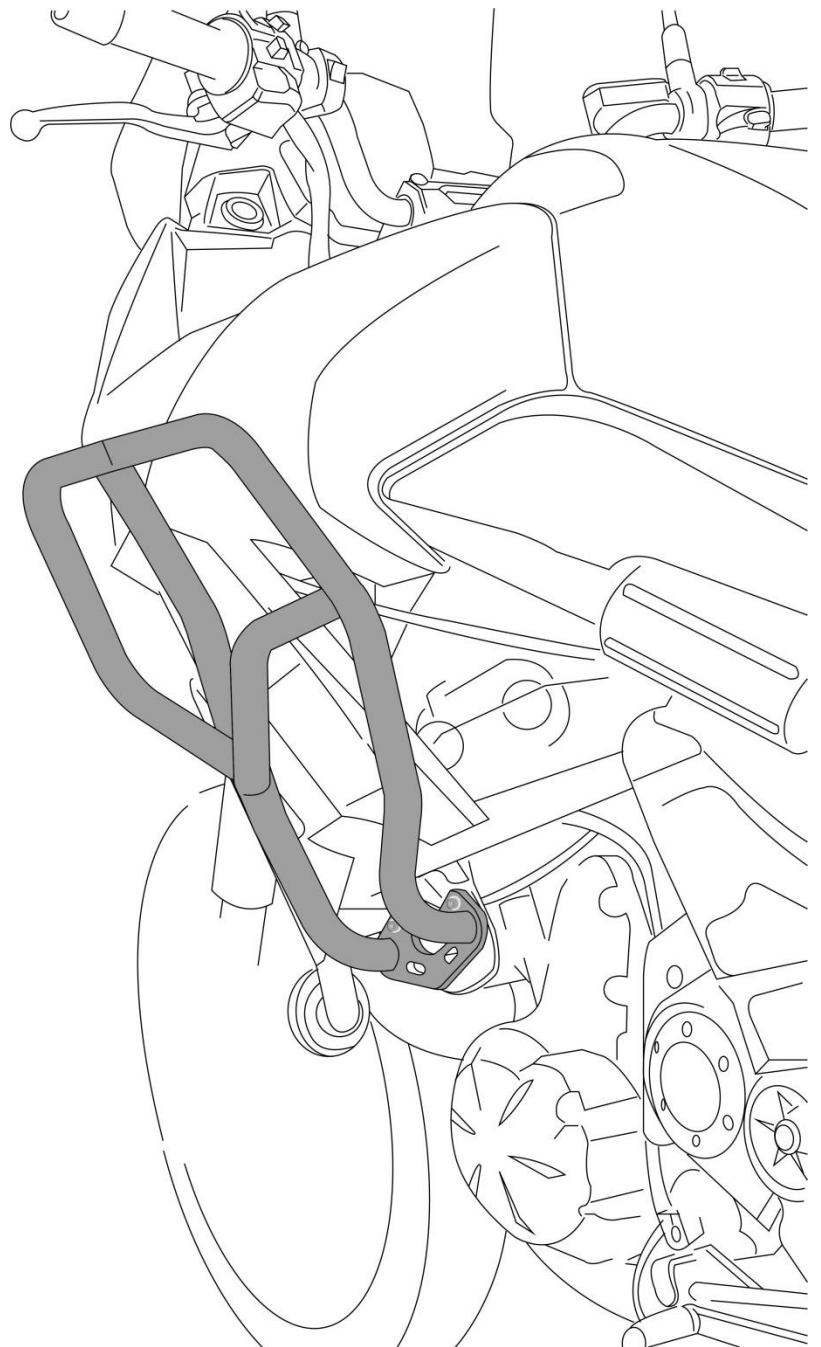
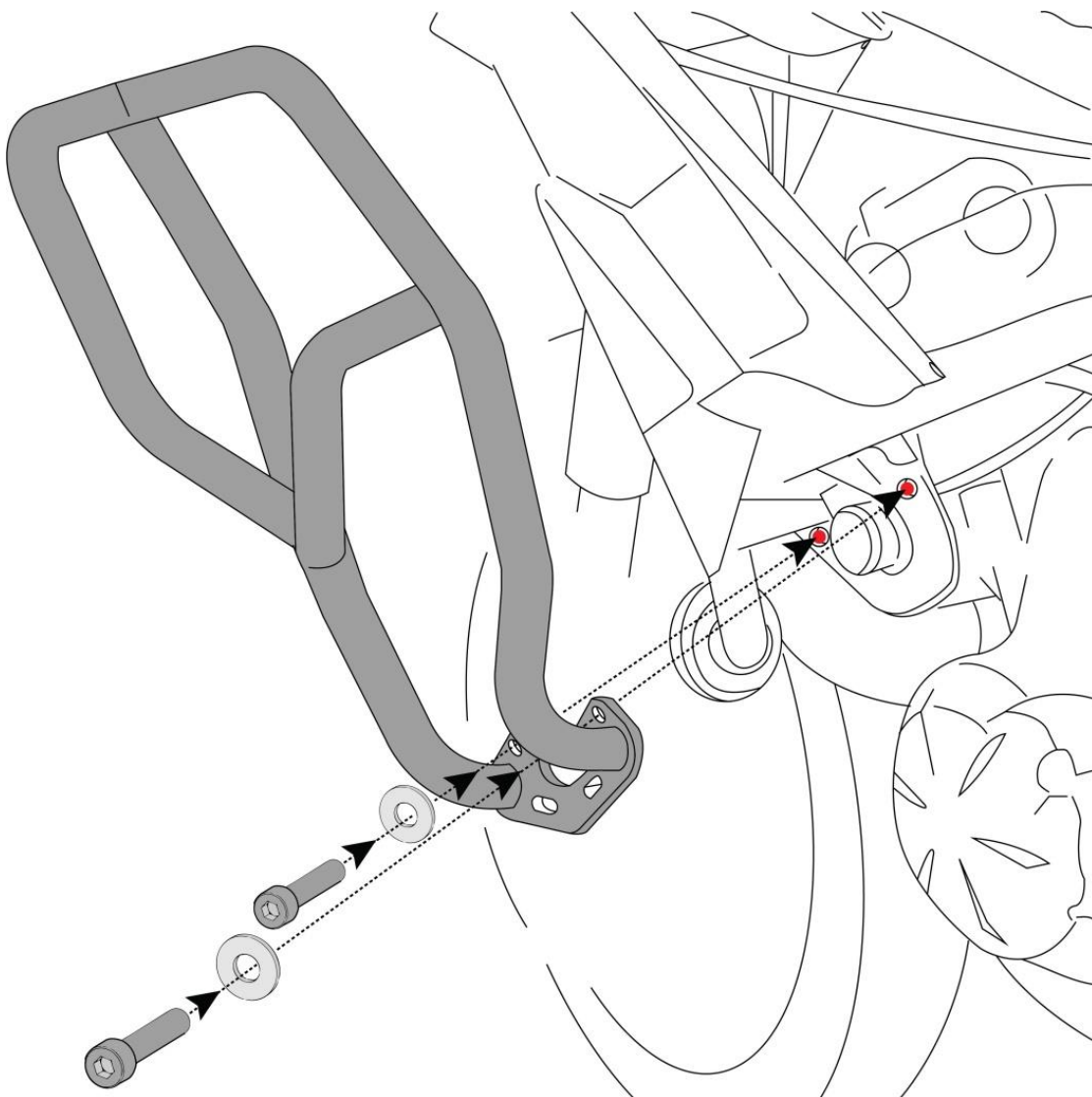
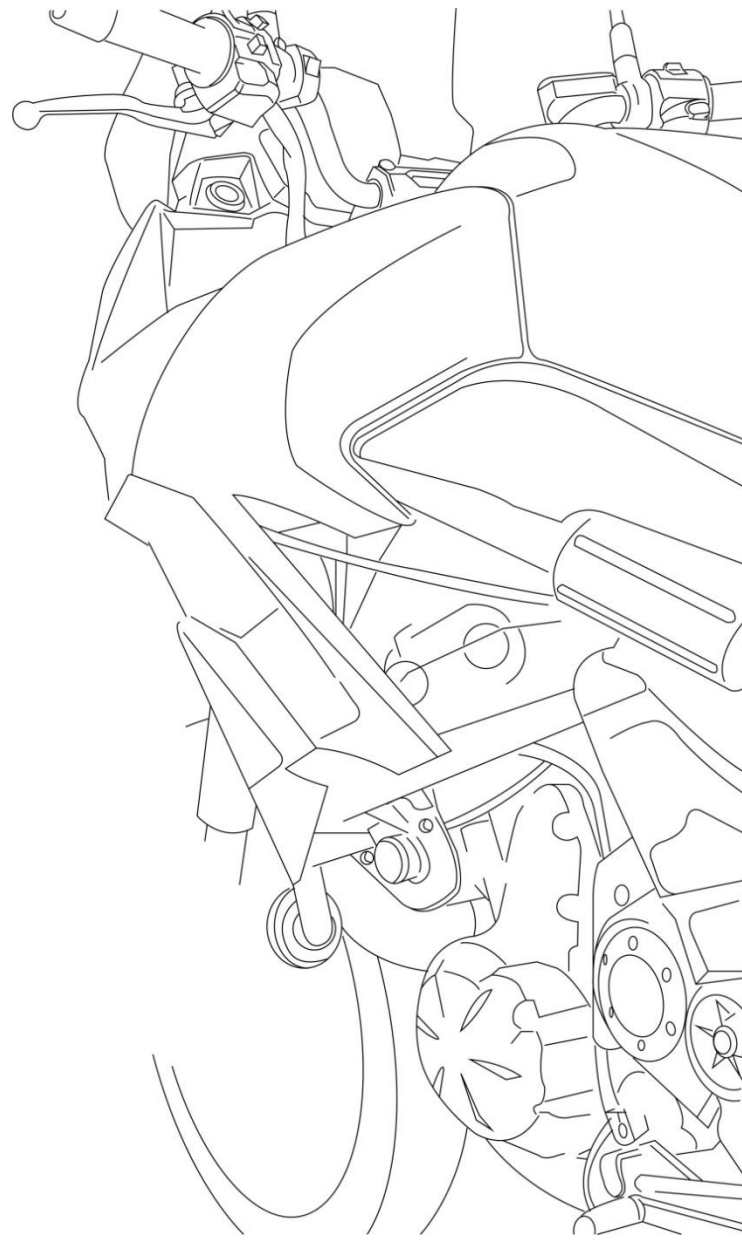
Step: 4

Orient the Crash bar LH (2) and mount it to the Upper Bracket, and Insert the screws (5) M6 x 15 and Washer (7) M6, but do not tighten it fully

Step: 5

The other end of the each of the Crash Bar (LH & RH) is designed with a Bracket for ease of mounting to the Vehicle Chassis

Use the Socket Head Cap Screw (6) M8 x 30 and Washer (8) M8 and tighten it to the Motorbike mounting as shown

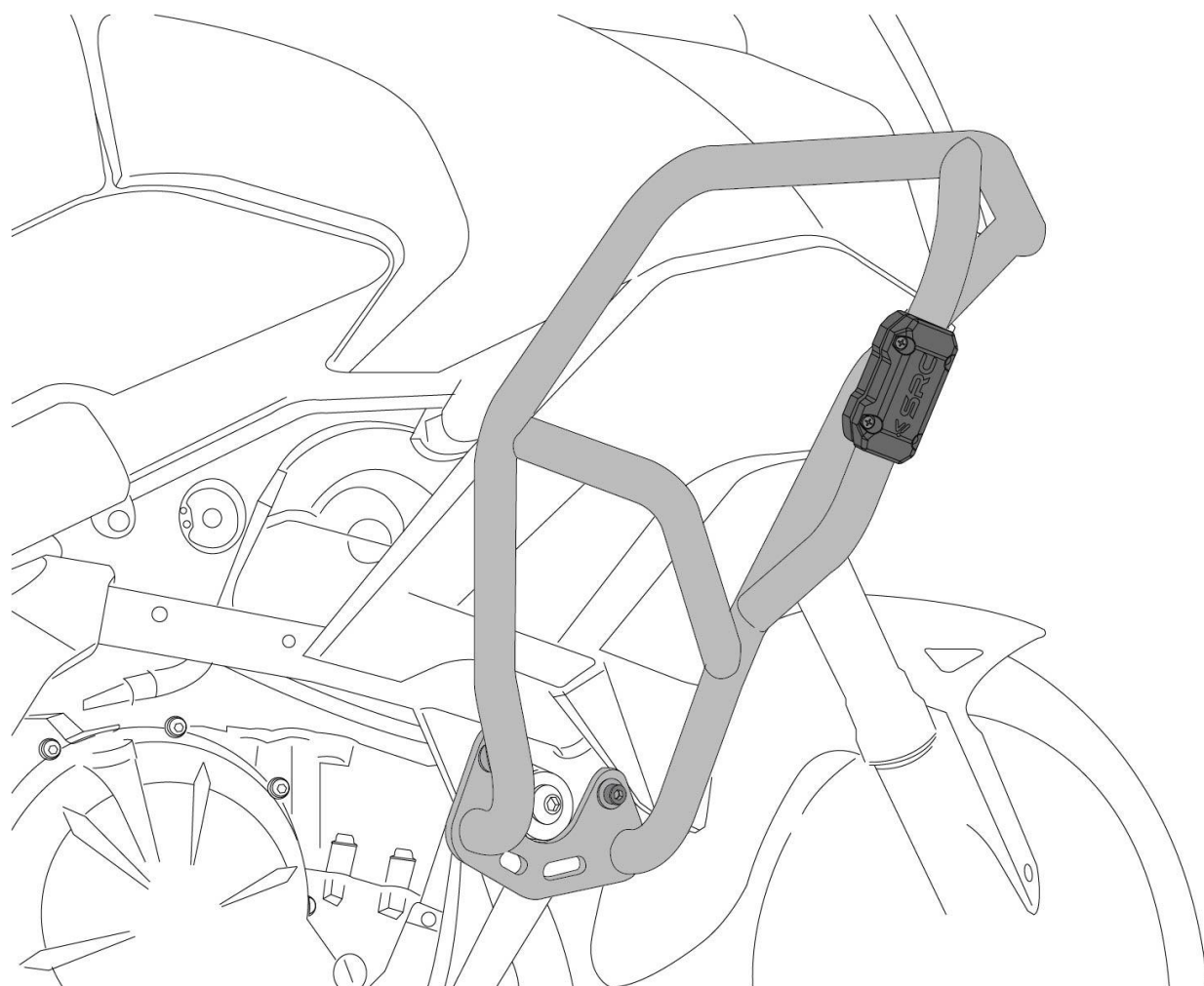
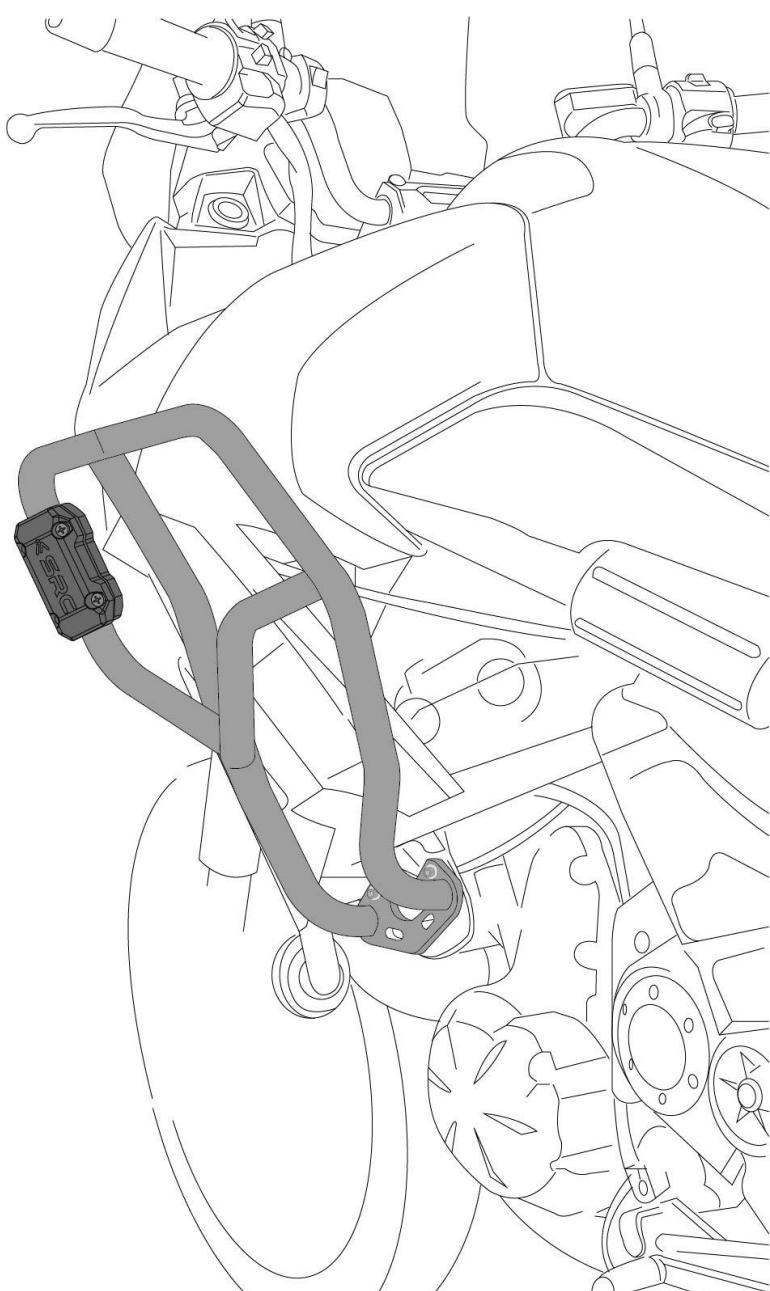
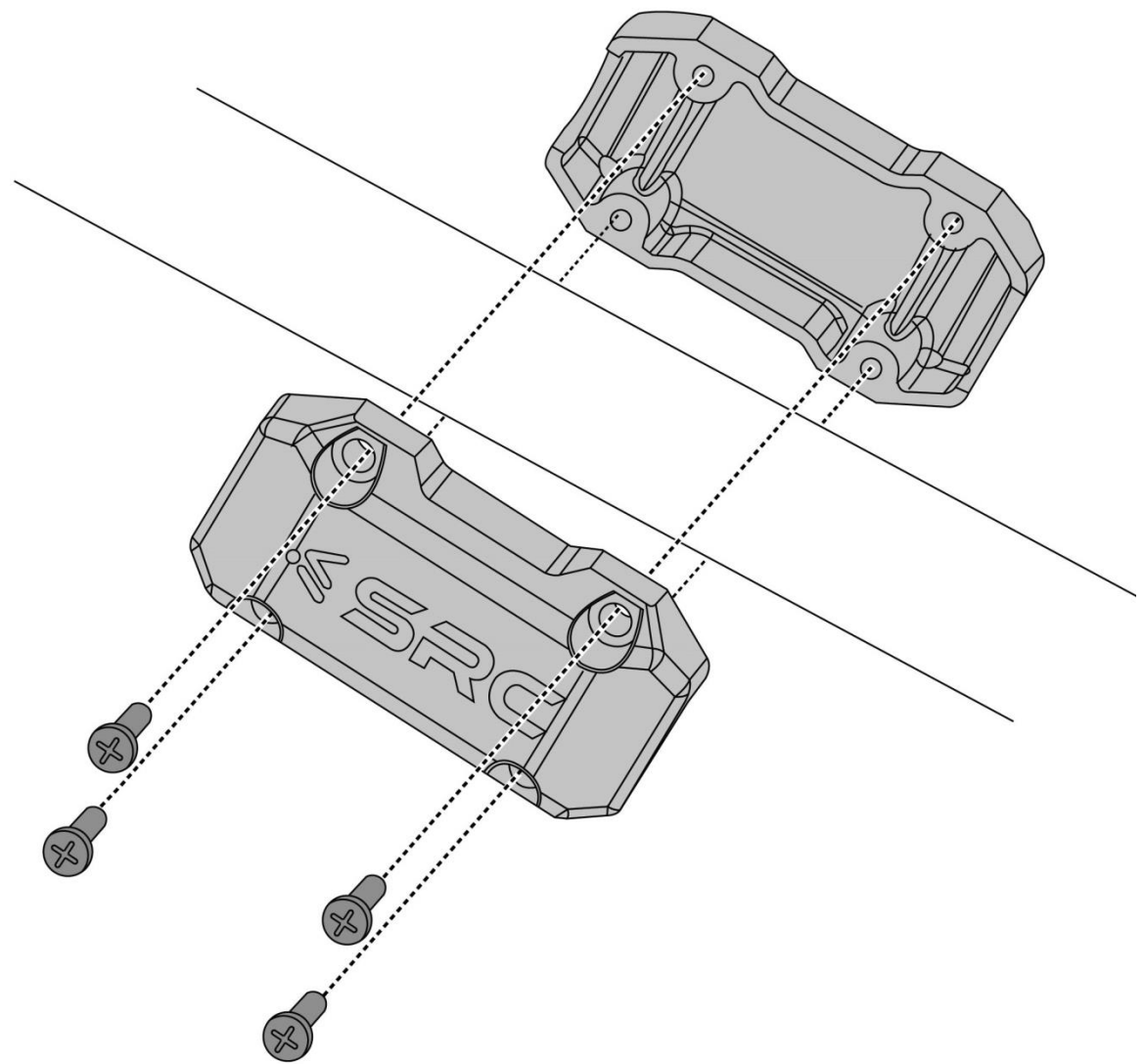


Step: 6

Mount the Slider Guards (4) on each of the Crash bar (2) and (3), and tighten the screws fully

Use the Slider Bar as the Virtual Orientation and looking from the front side of the Motorbike, make one final Positioning and Alignment of the Crash bars

Ensure mounting symmetry of the Slider Bars visually (it must not be offset or shifted visually when seen from the front side and back side)



Step: 7

Now, all the screws can be tightened using Torque Values, as given in the drawing

General Information

1. Crash Bar is directly mounted to the Chassis of the Motorbike, with the Two halves (Left Hand and Right Hand) mounted and joined using the Side Brackets & Top bracket with a Welded Cylindrical block, as shown in the subsequent drawings
2. SRC's Crash Bar protects the user, in the event of a fall or skidding of the vehicle.
3. We request you to pay attention to the Mounting Instructions in this document and follow the step-by-step procedures.
4. This Mounting Instruction manual is a "Do It Yourself" (DIY) fitment manual of the Accessory part to the Vehicle. We have prepared this based on our experience and knowledge, related to the Vehicle, Part and its functional aspects.
5. SRC cannot guarantee the interchangeability of the parts to any other manufacturer's accessory part. It is advised to the User, to inspect and ensure the original state of all other Vehicle parts.
6. We request you to bear in mind, that the Installed part can change the driving behaviour and/or the stability during driving or any other dynamic conditions.
7. If you have the appropriate tools and another person to assist you in the mounting, it will help.
8. After Completion of the Mounting and before taking on a First ride, Ensure and Check all functions of the Vehicle. It is always advised to check loosening of the fasteners after the first 50 kilo meters of ride and at regular intervals.

The Mounting Instructions can also be downloaded from SRC Website.