

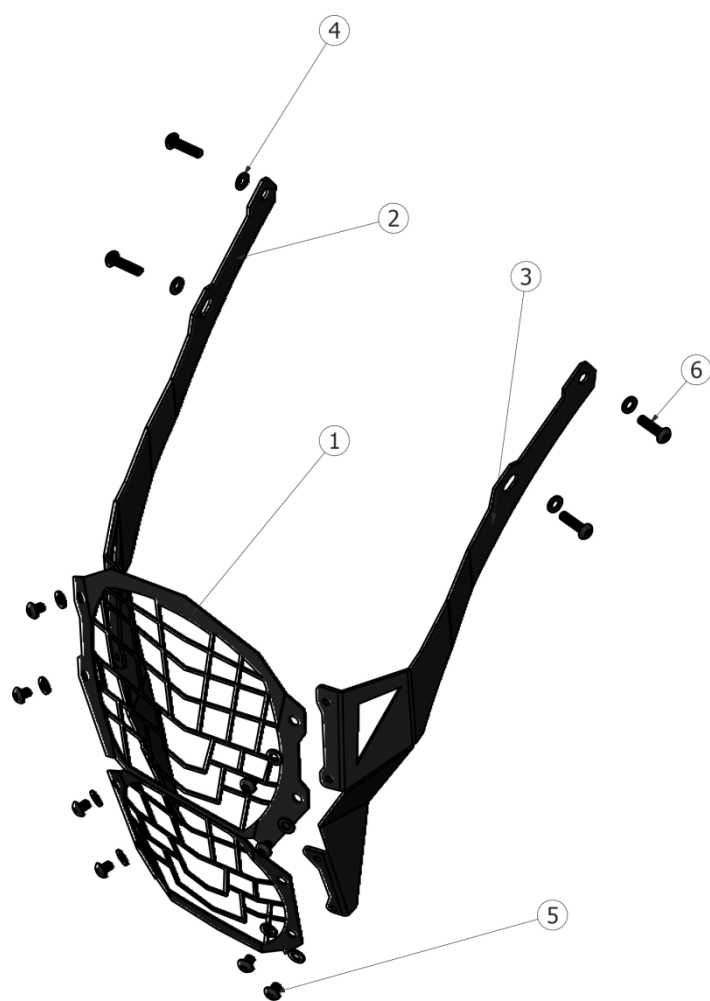
Scope of Supply/Bill of Material & Mounting Drawings

Part Number: K-VS11-01-01-SL / K-VS11-01-02

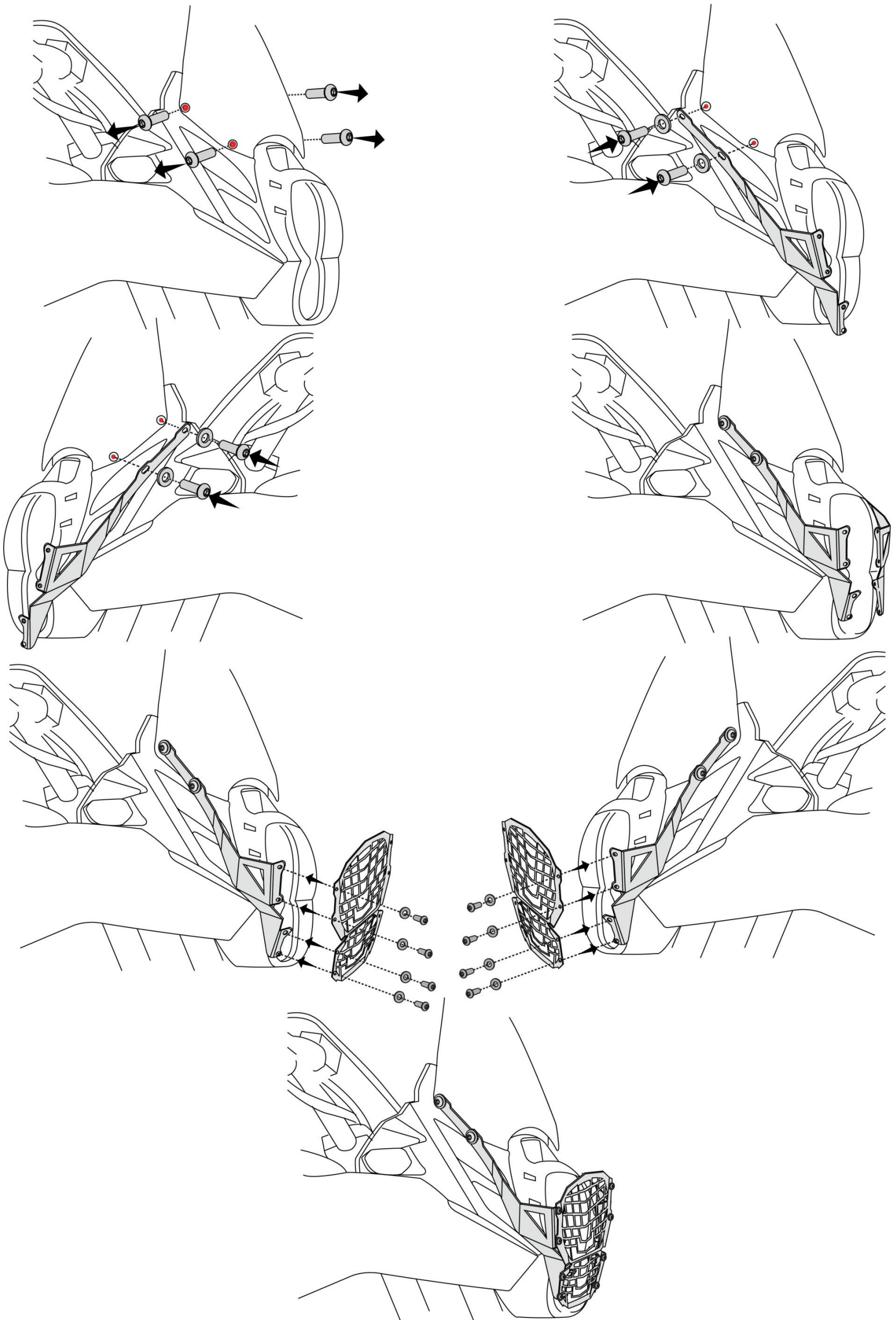
Part Description: Head Light Guard – KAWASAKI VERSYS650 (11 – 14)

Installation / Parts List / Bill of Material for Mounting

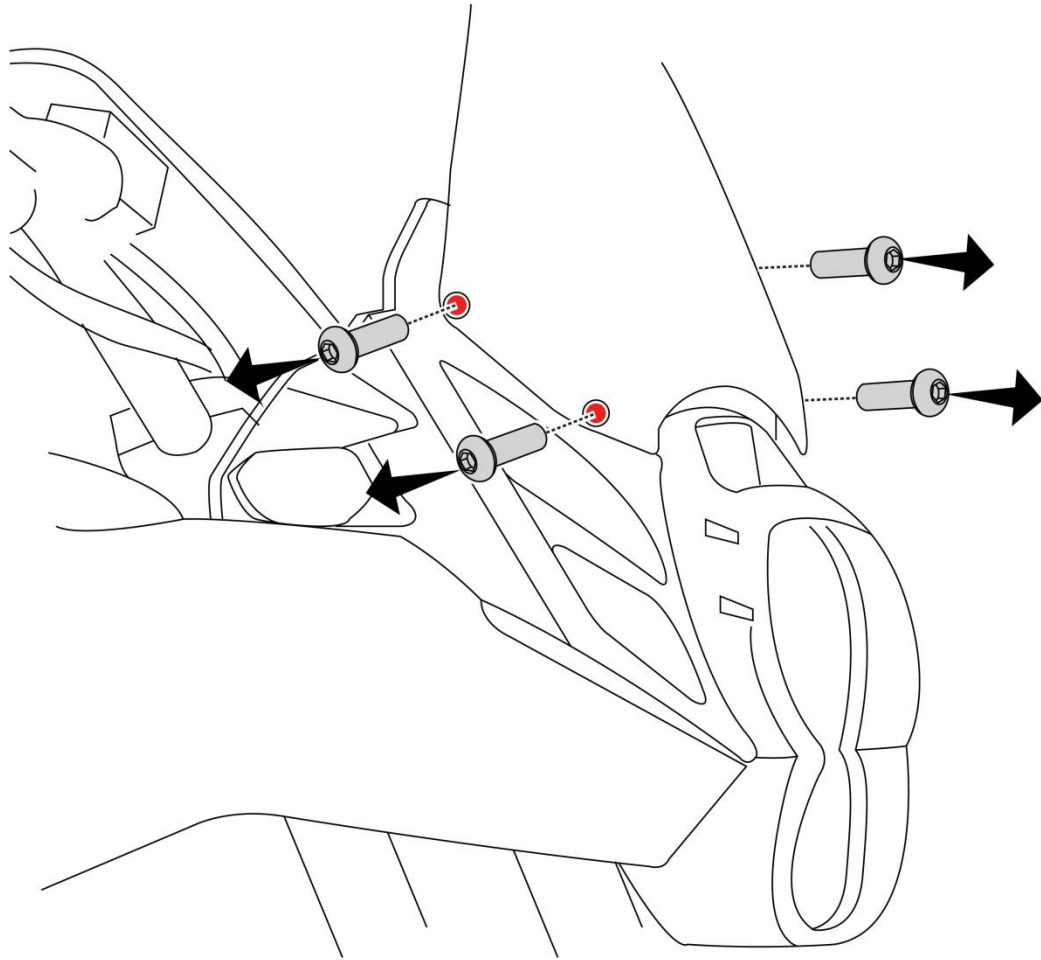
No.	Description	Quantity	Torque * (N-m)	Remarks **
1	Head Light Guard	1		
2	Bracket RH	1		
3	Bracket LH	1		
4	Washer M5	12		
5	Screw M5 x 6	8	5 - 6	Use Liquid Thread Locker
6	Screw M5 x 20	4	5 - 6	Use Liquid Thread Locker
SRC Design uses Metric System of Measurement and all dimensions are in Millimeters				
* Recommended to use the Torque specified in the table				
** Denotes Usage of Liquid Thread Locker in specified locations				



MOUNTING DRAWINGS



Mounting Instructions



Step 1:

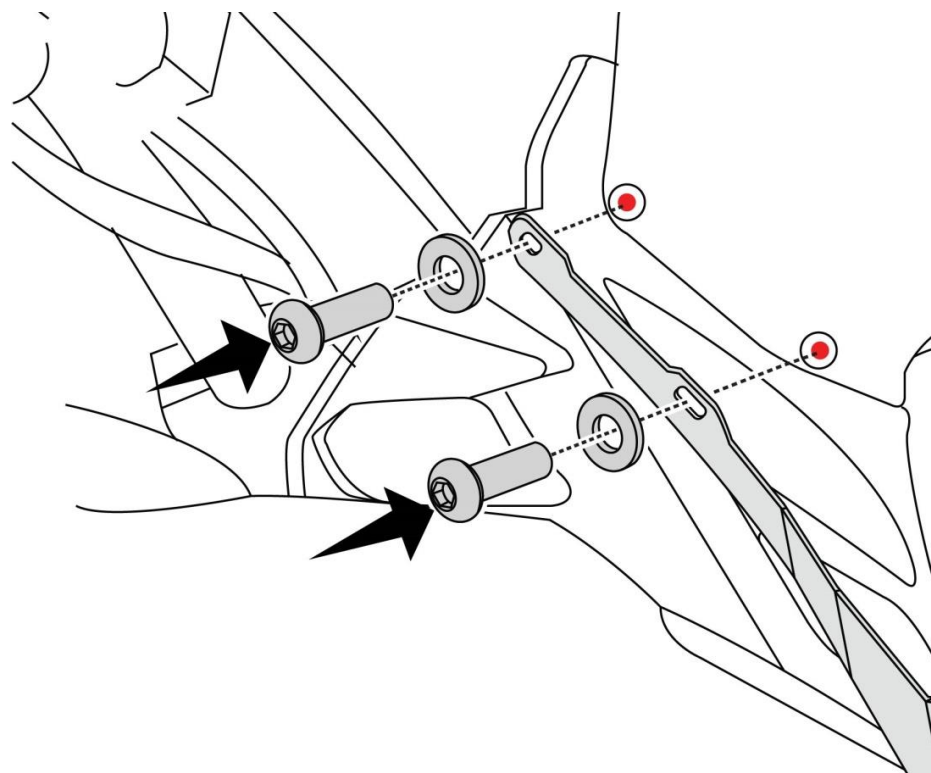
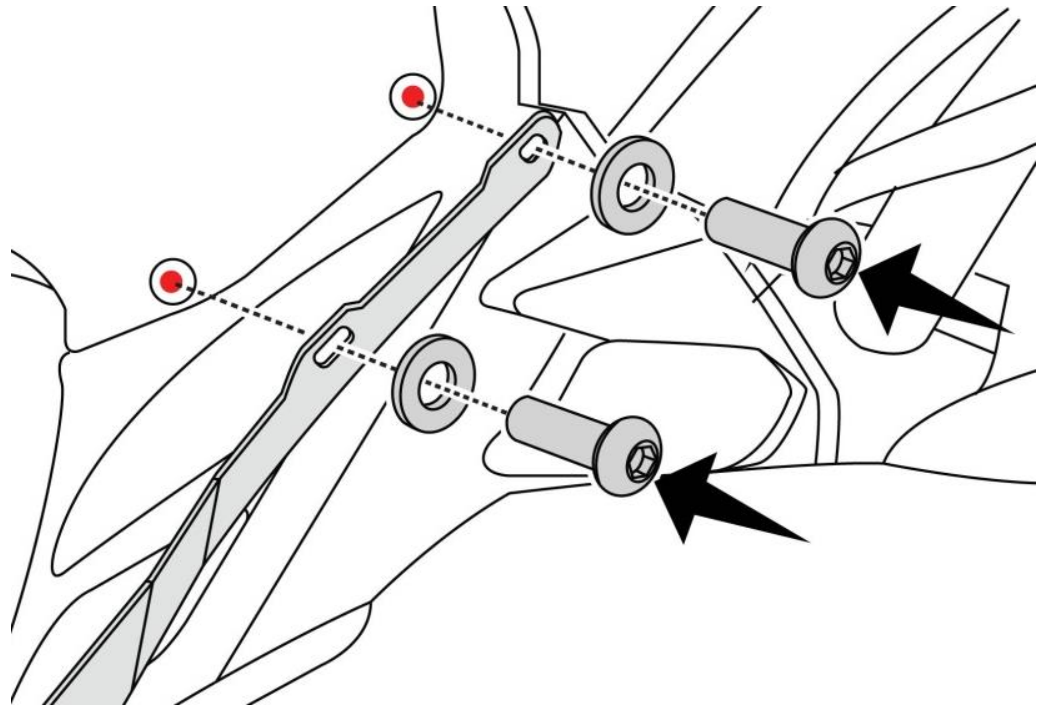
The 2 off screws as shown in Red colour from the mounting points, has to be removed from Right-hand and Left-hand side, and kept aside.

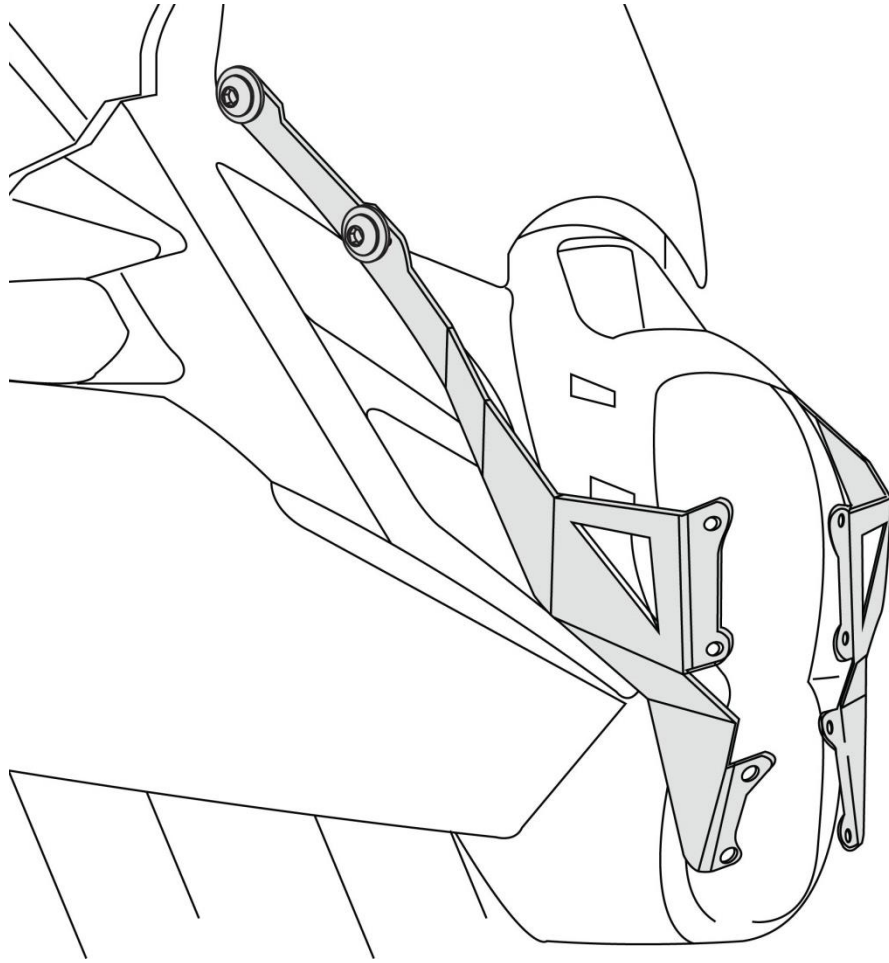
The Mounting points, will be used for mounting the Bracket RH and LH with SRC's scope of Mounting fasteners, which will be explained in subsequent steps.

Step 2:

Orient and Align the Bracket RH (2) and Bracket LH (3), as shown in-line with the Mounting points in the drawing.

Slip-in Washer M5 (4) – 2 off on each side and Screw M5 x 20 (6) – 2 off on each side.



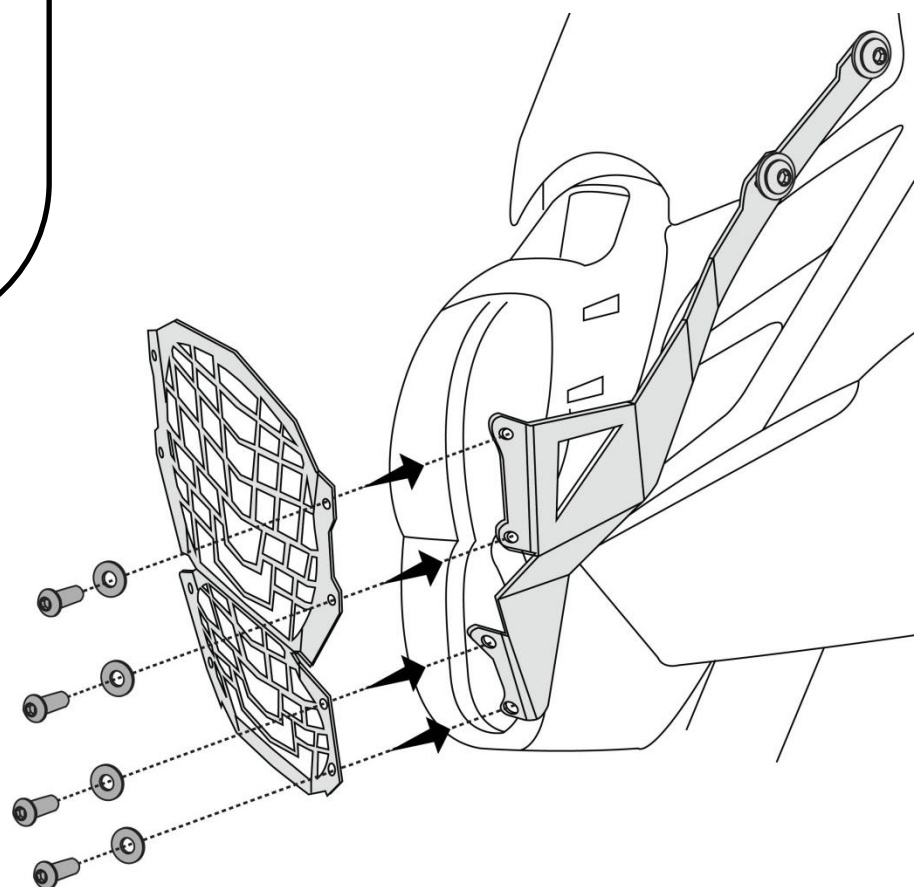
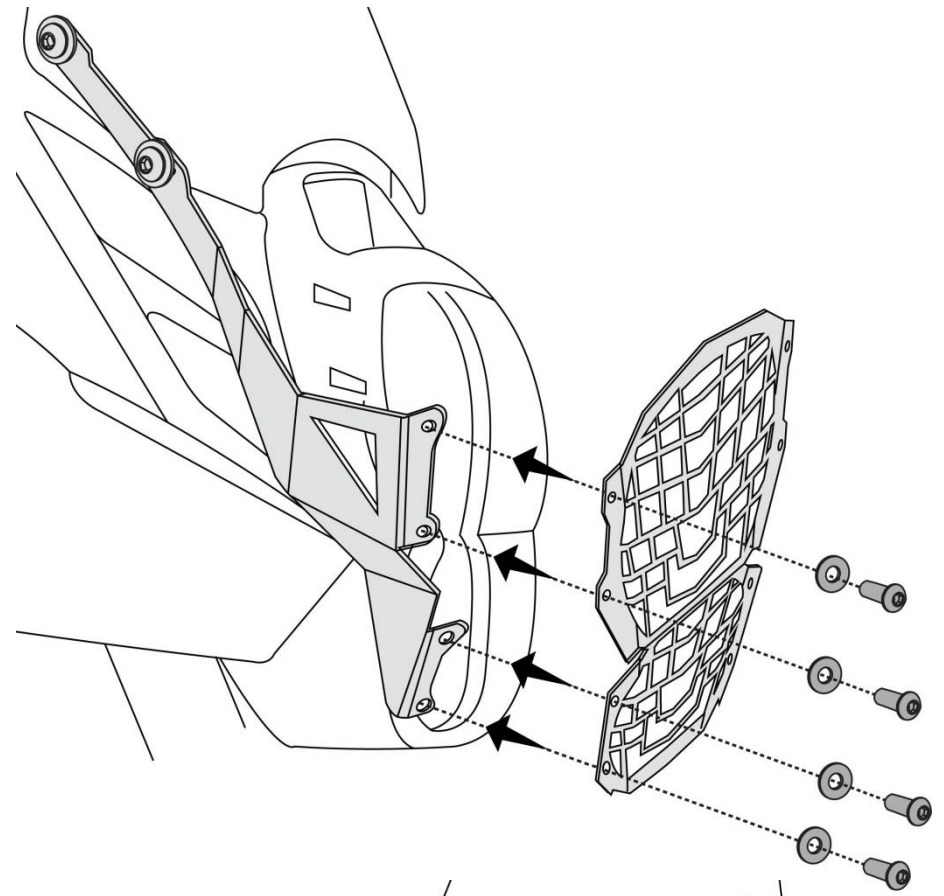


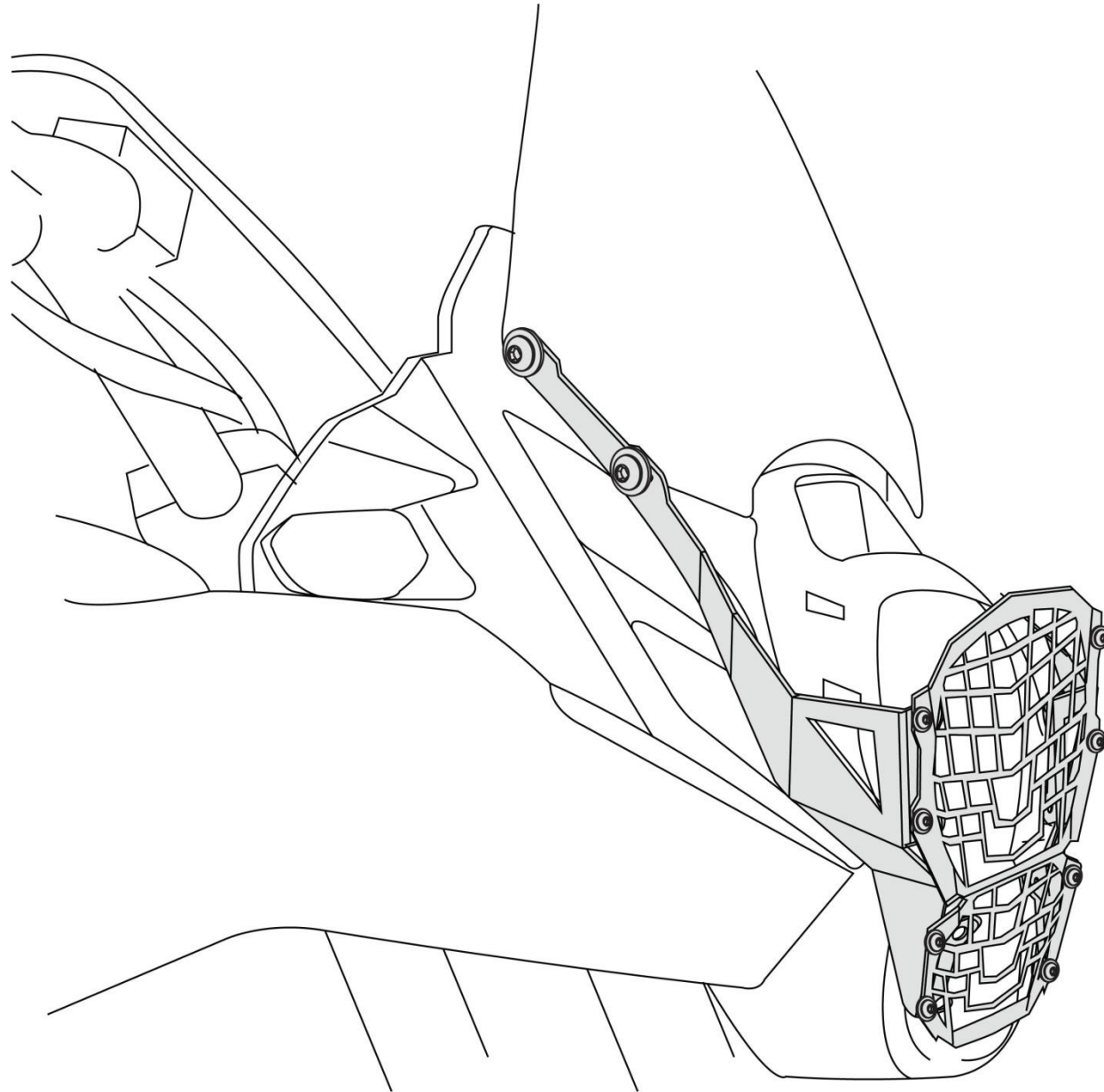
Step 3:

Ensure Symmetry of Orientation of the Bracket RH & LH and secure the threads in the Mounting Points and tighten them to torque, as per specifications in the BOM table.

Step 4:

Orient and Align the Head Light Guard (1), as shown, in-line with the 4 off Mounting holes in the Bracket RH (2) and Bracket LH (3) and Slide in the Washer M5 (4) – 4 off on each side and Screw M5 x 6 (5) – 4 off on each side.





Step 5:

Ensure Mounting symmetry and tighten the screws to torque as per specifications in the BOM table.

Final Mounted condition of the Head Light Guard, is as shown in the drawing above.



General Instructions

1. We request you to pay attention to the Mounting Instructions in this document and follow the step-by-step procedures.
2. This Mounting Instruction manual is a “Do It Yourself” (DIY) fitment manual of the Accessory part to the Vehicle. We have prepared this based on our experience and knowledge, related to the Vehicle, Part and its functional aspects.
3. SRC cannot guarantee the interchangeability of the parts to any other manufacturer’s accessory part. It is advised to the User, to inspect and ensure the original state of all other Vehicle parts.
4. We request you to bear in mind, that the Installed part can change the driving behaviour and/or the stability during driving or any other dynamic conditions.
5. If you have the appropriate tools and another person to assist you in the mounting, it will help.
6. After Completion of the Mounting and before taking on a First ride, Ensure and Check all functions of the Vehicle. It is always advised to check loosening of the fasteners after the first 50 kilo meters of ride and at regular intervals.
7. To the maximum extent possible, our design use the current Mounting/Fitment of the Original Equipment, so that Installation of these accessories will not affect the Payload or Function of the Vehicle or the Part on which it is mounted to protect it
8. If any additional modifications are to be done, prior to the fitment of the accessories, it will be explicitly specified in the instruction sheets